

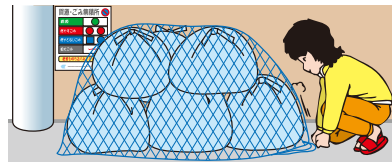
Additional information

Use and management of the collection site

The collection site is managed jointly by the users. Please discuss it carefully before using it. If you wish to newly establish or divide, please contact the relevant sanitation office with your agreement.

Prevention of scattering and crow deterrents

As a measure to prevent scattering, crow deterrents, and stealing garbage, nets are lent to each collection site. Please apply to a sanitation office to decide the person to manage from those who are using the collection site.



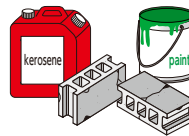
Disposing a large amount of garbage

When discharging household garbage to the collection site, the maximum amount must be up to three bags of 45 L at a time. Fees are charged when disposing of large amounts of garbage temporary, such as when moving or trimming plants. Please contact the sanitation office for details.

Harmful, dangerous, offensive smelling garbage, etc.

The following cannot be collected by the city.

1. Harmful, dangerous, offensive smelling goods such as gas cylinders, benzene (gasoline, paints), waste oil, kerosene, gunpowder, batteries, button batteries, products that use chlorofluorocarbon gas or substitute chlorofluorocarbon gas that are not subject to the Home Appliance Recycling Law
2. Items that may interfere with the management or disposal of the disposal site such as fire extinguishers, safe, chemicals, etc.
3. Other automobiles, motorcycles, tires, soil, stones, sand, blocks, construction waste, etc. Please have it picked up by the shop where you purchased it or have it processed by a professional service provider. If you have any questions, please contact the sanitation office.



Difficulty disposing of garbage

If it is difficult for you to put garbage or recyclables in a collection site (living alone over 65 years old, all households over 65 years old, or households with disabled persons only), a staff member will come to your home to pick up your garbage or recyclables. For more information, please contact the sanitation office.

If you are having trouble handling animal carcasses such as dogs and cats

Please contact the sanitation office for carcass disposal of pet dogs and cats weighing 25 kg or less, and animals that have died on your premises (fee of charged). Upon notification from the owner, manager, etc., the sanitation office will pick it up for a fee and hand it over to the companies involved.

When you wish to start a group collection of used paper or aluminum cans

Use group collection of used paper, aluminum cans, and other recyclables from households. In this activity, which raises awareness of recycling, about 700 groups in the city, including neighborhood associations, residents' associations, children's associations, and PTA groups, are active as group collection registered organizations. You can start group collections for your area or condominium. Registering with the city enables you to receive various support. For details, please contact the cleaning division of the Resource Recycling Promotion section (03-5662-1689).

Please use the Edogawa City AI chatbot

It can tell you how to dispose of garbage and the collection days.

URL

https://www.city.edogawa.tokyo.jp/e025/kurashi/gomi_recycle/kategomi/chatbod.html



Contacts

Koiwa Sanitation office,

Kasai Sanitation office,

Komatsugawa Sanitation Branch office,

Waste management and Recycling Section,

Higashi Koiwa 1-7-7,

Rinkai-cho 4-1-2,

Hirai 1-8-8,

Chuo 1-4-1,

TEL : 03-3673-2551

TEL : 03-3687-3896

TEL : 03-3684-6060

TEL : 03-5662-8434