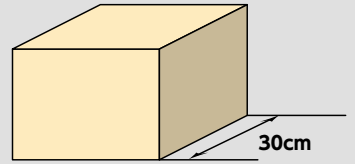


Bulky Waste

Fees apply
Reservation required



Please refer to the scale below.

- Items used in households within Edogawa City that measure roughly **30 cm or more on one side** are classified as bulky waste.
- Collection and drop-off are also available on Sundays and public holidays (except for the New Year holidays).



Items Not Accepted for Collection or Drop-off by the City

- Bulky waste generated from business activities
 - Waste materials from renovations or DIY projects
 - Items longer than 180 cm or heavier than 50 kg
 - Items subject to the Home Appliance Recycling Law
 - Items eligible for PC recycling
 - Items that are difficult to collect, transport, or process.
- See Home Appliance Recycling, p. 3
See Home PCs, p. 9
See Items Not Collected by the City, p. 10

Before disposing as bulky waste, consider these options.



Consider reuse before disposal.



Regular collection of plastic products

See Items Collected at Specified Collection Points, p. 8

Temporary collection of large plastic boxes



How to Dispose of Bulky Waste

※Please check the dimensions of your bulky waste before applying.

If you prefer collection

If you prefer drop-off

Apply to the Bulky Waste Reception Center

※Advance reservation is required for both collection and drop-off.



Internet (available 24 hours)



Chatbot (available 24 hours)

03-6744-5700

Hours / Monday to Saturday, 8:00 a.m. to 7:00 p.m. (except for the year-end and New Year holidays)



Purchase an Edogawa City Bulky Waste Disposal Ticket

Available at stores displaying the "Edogawa City Garbage Disposal Ticket Sales" sign, such as convenience stores and supermarkets.

※Tickets issued by other municipalities cannot be used.

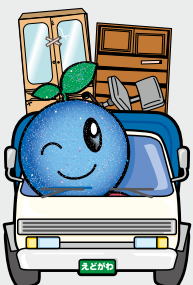


Attach a Bulky Waste Disposal Ticket before disposal.

※Items without a reservation cannot be collected or dropped off.

Collection

- Put out by 8:00 a.m. on the reserved date at the designated location, with a **Bulky Waste Disposal Ticket** attached.
- Collection is generally between 8:00 a.m. and 3:30 p.m. Time cannot be specified.



※For details, please visit the city website.



Drop-off (see map below)

- Bring items to the Bulky Waste Collection Facility at your reserved date and time (see map below).
- **You can bring up to 10 items per household per visit, and up to 3 visits per fiscal year.**
- Multiple drop-offs on the same day are not allowed. Example: Bringing 10 items at a time, 3 times on the same day.
- **Only the applicant or a household member** can bring items.
- Please bring ID for verification (e.g., driver's license, My Number card).



5cm

10cm

15cm

20cm