

Burnable Garbage

Collected twice a week

Put them in a container with a lid or in a transparent or semi-transparent bag so the contents are visible.



Put out at the collection site by **8:00 a.m.** on the designated day.

Plastic Containers and Packaging

Waste Paper

Glass Bottles, Cans, and PET Bottles

Burnable Garbage

Non-burnable Garbage

Bulky Waste

Items Collected at specified Collection Points

Items Not Collected by the City

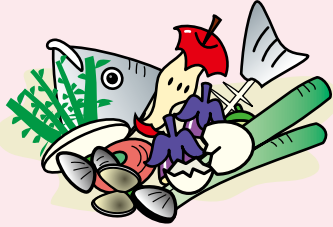
How to Dispose of Garbage During Disasters

Business Waste

Flow of Recyclables and Garbage

What You Should Do in This Situation?

Food waste



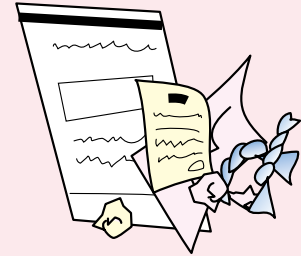
Drain excess water before disposal.

Cooking oil

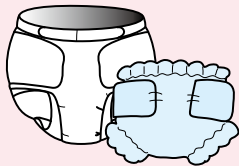


To prevent spills, solidify with a coagulant or absorb into paper or cloth before disposal.

Paper scraps

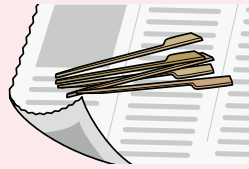


Disposable diapers



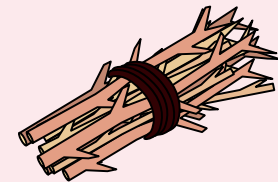
Remove waste before disposal.

Bamboo skewers



Wrap sharp ends in newspaper, etc., so they do not protrude.

Branches and flowers



Cut to under 30 cm, bundle, and put out.

Plastic products



The 16 designated plastic product items are also collected at regular collection points.



See Plastic Product, p. 8

Rubber and leather products



Clothes



Please take your used clothing and textiles to recycling collection whenever possible.



See Used Clothing and Textile Recycling, p. 8

- ⚠ You may put out **up to three 45 L bags** at a time. If disposing of a large quantity, a fee will apply (application required), so please contact your local sanitation office.
- ⚠ When putting items out in bags, wrap food waste in paper, etc., so it is not visible from the outside to prevent scattering by crows and other animals.
- ⚠ To prevent scattering, remove excess moisture and air before disposal. Liquid and powdery items cannot be collected.