



Put out at the collection site by **8:00 a.m.** on the designated day.

Tie them with string by type and put them out.

Cardboard



Newspapers



Paper cartons (500 ml or more)



Only cartons with white interiors are accepted. Rinse with water, open, dry, and put out. *Cartons under 500 ml are classified as mixed paper.

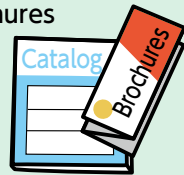
Magazines



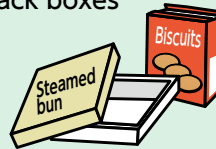
Mixed paper

Waste paper other than newspapers, magazines, cardboard, and paper cartons.

Brochures



Snack boxes



Wrapping paper



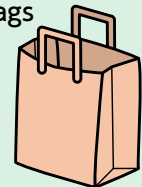
Tissue box



Notebooks

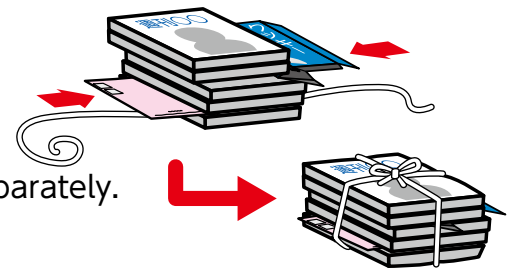


Paper bags

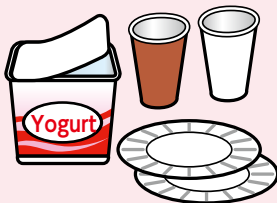


How to Dispose

- Remove non-paper materials such as plastic.
- Flatten boxes.
- Tie mixed paper together with magazines, or bundle it separately.
- Keep cardboard and mixed paper separate.



Items Not Accepted



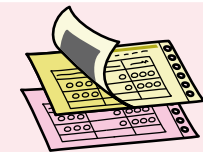
Waterproof paper (paper cups and plates, etc.)



Photo printing paper



Soiled paper (pizza boxes, etc.)



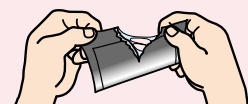
Carbon copy paper



Thermal paper for receipts, faxes, etc.



Aluminum-coated paper



Plastic-coated paper

Dispose of as Burnable Garbage