

# What You Should Do in This Situation?

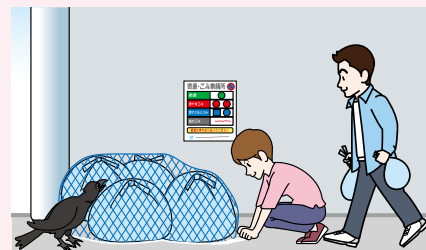


## Use and Management of Collection Sites

If you are unsure which collection site to use due to moving into or within the city, please consult your neighbors, the residents' association, your property management company, or other users of the site. Collection sites are jointly managed by users, so please discuss and use them cooperatively.

### If measures against scattering or crows are needed:

Collection nets are available for loan to prevent scattering, crows, and unauthorized removal. They are not available for individual household collection. Please designate a person responsible for management from among users of the site and apply at your local sanitation office.



### In case of severe weather such as typhoons or heavy snow:

Collection times may be significantly delayed or services may be suspended due to weather or traffic conditions. Please check the city website for updates. Please help prevent the scattering of recyclables and garbage.

### When disposing of a large amount of waste:

When putting out household waste at a collection site, the limit is three 45 L bags at a time. **If you need to dispose of a large amount of waste temporarily** due to moving or garden pruning, **a fee will apply.** Please contact your local sanitation office for details.

### If you cannot bring waste to the collection site:

If you have difficulty to bring waste to the collection site, such as households consisting solely of individuals aged 65 or older, or persons with disabilities, or if you have difficulty moving bulky waste, please contact your local sanitation office.

### If you need help disposing of animal remains (dogs, cats, etc.):

For disposal of pets such as dogs and cats under 25 kg, or animals found deceased on your property, please contact your local sanitation office. Upon notification from the owner or manager, the sanitation office will collect the remains **for a fee** and transfer them to a contractor for joint cremation and burial.

### If you would like to start a community collection of waste paper, aluminum cans, etc.:

Please use the community recycling system for items such as waste paper and aluminum cans generated at home. The city supports these activities by providing incentives based on the amount collected.:



## Main Contact Information

<b>Recyclables:</b>	Resource Recycling Promotion Section (Chuo 1-4-1)	☎ 03-5662-1689
<b>Garbage disposal method (General inquiries)</b>	Koiwa Sanitation Office (Higashi Koiwa 1-7-7)	☎ 03-3673-2551
	Kasai Sanitation Office (Rinkai-cho 4-1-2)	☎ 03-3687-3896
	Komatsugawa Sanitation Branch Office (Hirai 1-8-8)	☎ 03-3684-6060
<b>Bulky waste:</b>	Bulky Waste Reception Center	☎ 03-6744-5700
<b>About this booklet (Editing and publication):</b>	Cleaning Division, Edogawa City (Chuo 1-4-1)	☎ 03-5662-4387

