

Edogawa City Flooding Hazard Map

Digest Edition

Second Edition

Published in
July 2025

You can find more
detailed information in
the main edition of the
Edogawa City Flooding
Hazard Map

Please visit the City's official homepage



Contents

Large-size map (major flood damage)	Page 2 (pocket)
Topography of Edogawa City	Page 3
When does major Flooding damage occur?	Page 4-5
Where should I evacuate to in the event of flooding?	Page 6-7
What information is announced in the event of flooding?	Page 8-9
Personal Long-Distance Evacuation Plan/Personal Evacuation Plan	Page 10-11
What should I start thinking about first?	Page 12
Support for people who will find it difficult to evacuate alone	Page 12

Make sure to read and
think about this!

For more details and the latest
information, visit the City's official
homepage

Edogawa City Flooding Hazard Map
(main edition)

URL <https://www.city.edogawa.tokyo.jp/e007/bosaianzen/bosai/kanrenmap/hazardmap/index.html>



A multilingual version is also available

- Japanese version
- Plain Japanese version
- Chinese version [Simplified Chinese version]

Translations in 121 languages are also available
on the official website of Edogawa City.

A City Where No One Loses Their Life To Protect Each and Every Individual

You should ask yourself:

“Why is it unsafe to stay here during a major flood?”

“What actions can I take to protect my life during a flood in my area?”

Major
Flood Damage
Flooding
/High Tide
Flooding

Large-Size
Map

Edogawa City Major Flood Damage Hazard Map Edogawa City Long-Distance Evacuation Map

For more detailed information,
please check the main edition

Please visit the City's official homepage

Edogawa City Flooding Hazard Map (main edition)

URL <https://www.city.edogawa.tokyo.jp/e007/bosai/kanrenmap/hazardmap/index.html>



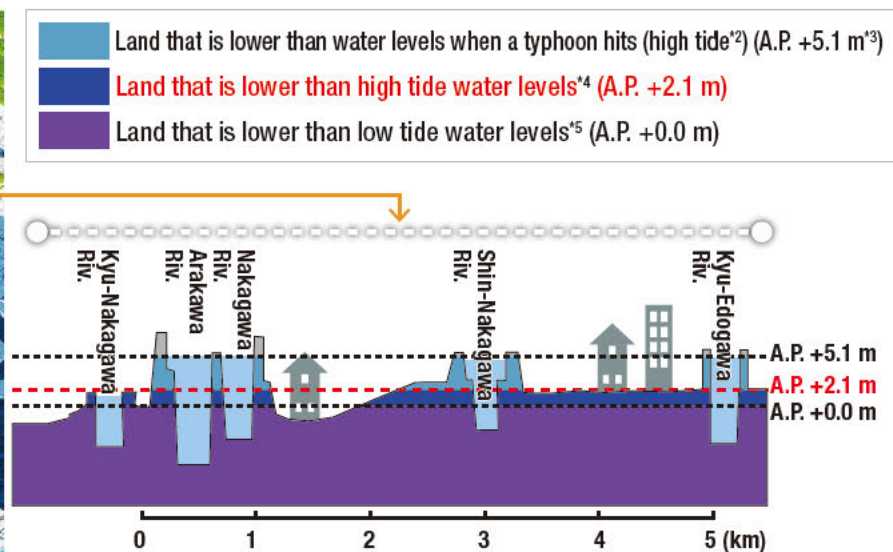
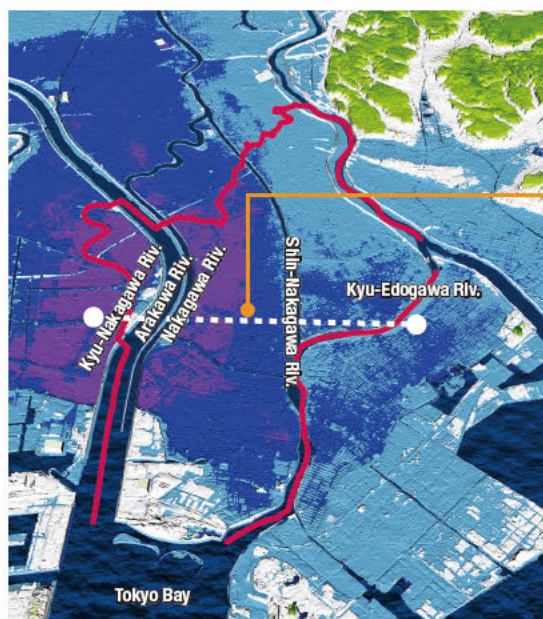
Topography of Edogawa City

Edogawa City is located downstream of large rivers such as the Arakawa and Edogawa rivers.



Edogawa City is surrounded by the Arakawa River, Edogawa River, and Tokyo Bay; therefore, 70% of its land area is below sea level^{*1}.

Water levels of nearby rivers will rise above ground elevations in most areas of Edogawa City, even in the absence of torrential rain or typhoons.



^{*1} Land that is lower than high tide water levels

^{*2} Rising sea levels when a typhoon or developing low pressure system passes through

^{*3} Height in the case of high tide flooding levels caused by an Ise Bay typhoon-level storm (A.P. is the standard for water levels of the Arakawa River, etc.)

^{*4} The sea is at high tide and sea levels are at full height

^{*5} The sea is at low tide and sea levels are at their lowest

When does major flooding damage occur?

In addition to inland flooding and overflowing rivers, Edogawa City is expected to incur extensive damage in the unlikely but possible event of major flooding (high tide flooding and water overflowing from multiple rivers occurring at the same time).

Potential types of flooding in Edogawa City

Inland flooding

Rainwater cannot be drained fully and starts to accumulate



If there is so much rainfall in the City or surrounding areas that it cannot fully drain away...

While various measures are being taken in Edogawa City, depending on rain volume, heavy rainfall could overwhelm rainwater drainage systems, leading to water overflowing in populated areas (inland flooding).

Take care when it rains in the City or surrounding areas



Overflowing rivers

River water floods into populated areas



If it continues to rain often in the City, surrounding areas, or wider Kanto region...

If it continues to rain often in the Kanto region, rainwater may accumulate downstream in rivers in Edogawa City, causing rivers unable to hold the water to overflow. This can occur even if no rain falls within City limits.

Take care when it rains in the City or wider Kanto region



Major flood damage

High tide flooding and water overflowing from multiple rivers

Water flows in from the sea and multiple rivers



If it continues to rain often due to an approaching super typhoon...

If a super typhoon approaches, rain will fall across Japan over a long period of time, causing river levels to rise.

High tide flooding that would accompany such a typhoon should it make landfall would cause sea levels to rise, leading to large volumes of seawater flowing into rivers. The large volumes of seawater and water flowing from upstream would cause multiple rivers to overflow, submerging Edogawa City, along with other lower-elevation areas of Tokyo, over a substantial period of time.

Beware of super typhoons



Learn about flooding in Edogawa City in more detail!

Potential types of flooding in Edogawa City

Edogawa City Flooding Hazard Map (main edition) pages 5 to 10



Major flooding that submerges all areas across the 5 cities of Koto

Due to the impacts of global warming, super typhoons and heavy rains the likes never seen before now have caused major flood damage in many parts of the world through high tide and other forms of flooding.

Including Edogawa City, most areas in the 5 cities of Koto* will become submerged.

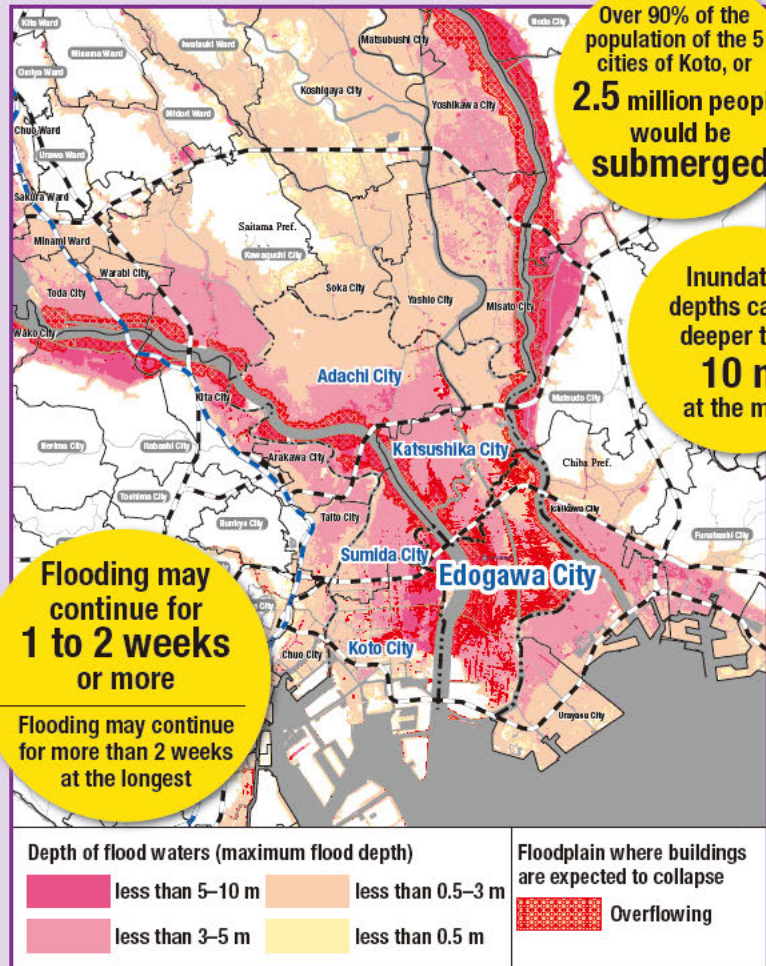
*Edogawa City, Sumida City, Koto City, Adachi City, and Katsushika City

This map shows the maximum values of the following maps. The 5 cities of Koto have positioned them as the maps of flooding subject to long-distance evacuation.

- Expected inundation area map of high tide flooding (maximum expected scale)
- Expected inundation area map of Arakawa River flooding (maximum expected scale)
- Expected inundation area map of Edogawa River flooding (maximum expected scale)

What is "maximum expected scale"?

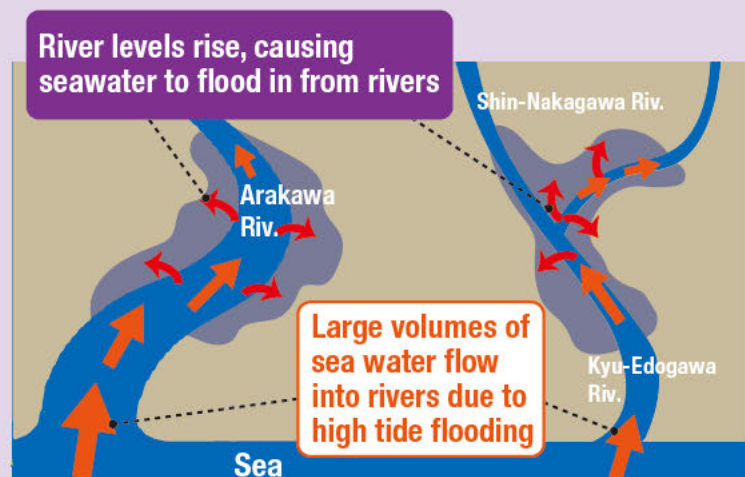
This is the scale of a typhoon combining rain volumes on the scale of an event occurring around once every 1,000 years and pressure, size, and other factors at the maximum values of past typhoons (such a typhoon is assumed to have a one-in-1,000-to-5,000-year probability of passing through the wider Tokyo Bay area).



What is high tide flooding?

If a typhoon or developing low pressure system passes through the region, tide levels may rise significantly. This is known as high tide flooding.

In Edogawa City, rising sea levels during high tide flooding causes large volumes of seawater to flow into rivers, resulting in river levels rising and potentially even causing seawater to flow from rivers into land areas.



Where Should I Evacuate To in the Event of Flooding?

Think about evacuation options for both when major flooding is and is not expected.

Edogawa City Flood Response

A super typhoon is expected to make landfall or bring about heavy rainfall
The 5 cities of Koto jointly make a decision three days prior

When major flooding is expected

Flooding is likely

Typhoon information, rainfall forecasts

Weather warning / advisory
River level information

Typhoon

When major flooding is not expected

No shift to long-distance evacuation mode three days prior

Long-distance evacuation mode

Long-distance evacuation is required by all City residents in principle

Can you secure a place to evacuate to outside the City, such as the home of a relative or friend, a place of work, or accommodation facilities?

Yes

No



Those who use accommodation facilities for long-distance evacuation* will be offered a subsidy.

Up to 9,000 yen per person

*This is limited to cases where the 5 cities of Koto have jointly called for long-distance evacuation (Joint examination begins).

Can you stay in place at home during a flood?

Can stay in place

Whether it is possible to stay in place depends on specific flood estimations.



Can't stay in place

In the following situations, you can't stay in place

- × Floor levels lower than the flood depth
- × In this area, wooden buildings may collapse due to rapidly flowing water
- × Flooding will continue over a long period of time



Can you secure a safe place to evacuate to, such as the home of a relative or friend, a place of work, or accommodation facilities?

Yes

No



How to check flooding conditions for your home

Overlaying of all possible flooding events

Large-size map (major flood damage)

► Go to page 2 (pocket)

Maps by area



Specific flood estimations

Expected inundation area maps by river



Expected inundation area maps by scale of rainfall



Learn about evacuating in the case of a flood in more detail!

What Should I Do in the Event of Evacuation During Flooding?

Edogawa City Flooding Hazard Map (main edition) pages 15 to 22



How to evacuate

Long-distance evacuation

Recommended

Evacuate to a safe place outside the City, such as the home of a relative or friend, a place of work, or accommodation facilities.

How to evacuate

Long-distance evacuation (public long-distance evacuation facility)

Evacuate to a public facility outside of the City where long-distance evacuation is possible.

For the latest information on public long-distance evacuation facilities, check the Edogawa City official homepage

For a list of emergency supplies and Items to Stockpile, see the Edogawa City Flooding Hazard Map (main edition) on page 53

How to evacuate

Evacuate to a local disaster prevention base (Kasai Southern District, Konodai Plateau, or Ojima-Komatsugawa Park)

Safe areas that will not be submerged when flood disasters occur within or nearby the city. However, since you will be outdoors, evacuate after the wind and rain have subsided to ensure your safety.

How to evacuate

Evacuate to an evacuation facility (elementary/junior high school, etc.)

For a list of emergency supplies and Items to Stockpile, see the Edogawa City Flooding Hazard Map (main edition) on page 53

It is expected that most evacuation facilities will be flooded, and that flooding will continue over an extended period of time. Those who have no choice but to evacuate here will be isolated by floodwaters and forced to live in difficult conditions. Moreover, food and other stockpiled items will be limited.

How to evacuate

Stay in place at home

For a list of items to stockpile, see the Edogawa City Flooding Hazard Map (main edition) on page 53

Stay in place at home if you have been able to confirm from the flooding situation of your home that safety can be ensured. However, you must be prepared to withstand the flood conditions until the waters recede.

How to evacuate

Secure an evacuation point by yourself

Recommended

Evacuate to a location in a safe area, such as the home of a relative or friend, a place of work, or accommodation facilities.

How to evacuate

Evacuate to a local disaster prevention base (Kasai Southern District, Konodai Plateau, or Ojima-Komatsugawa Park)

Safe areas that will not be submerged when flood disasters occur within or nearby the city. However, since you will be outdoors, evacuate after the wind and rain have subsided to ensure your safety.

How to evacuate

Evacuate to an evacuation facility (elementary/junior high school, etc.)

For a list of emergency supplies and Items to Stockpile, see the Edogawa City Flooding Hazard Map (main edition) on page 53

These are last resort emergency evacuation facilities to be used in such cases where you do not have enough time to evacuate or you cannot evacuate over a long distance. However, the first and second floors could become flooded. Moreover, food and other stockpiled items will be limited.

What Information is Announced in the Event of Flooding?

Think about the best time to evacuate by checking information on both when major flooding is and when is not expected.

Edogawa City Flood Response

A super typhoon is expected to make landfall or bring about heavy rainfall
The 5 cities of Koto jointly make a decision three days prior

When major flooding is expected

Flooding is likely

Typhoon information, rainfall forecasts

Weather warning / advisory
River level information

Typhoon

When major flooding is not expected

No shift to long-distance evacuation mode three days prior

Long-distance evacuation mode

Long-distance evacuation is required by all City residents in principle

Will you or those evacuating with you need more time for long-distance evacuation?

For example Elderly people, people with disabilities, pregnant women and infants, people evacuating over large distances, people evacuating by car, etc.

No

Yes

Begin long-distance evacuation by

Information on voluntary long-distance evacuation
(call for long-distance evacuation)

Begin long-distance evacuation by

Long-distance evacuation instruction

Will you or those evacuating with you need more time to evacuate?

For example Elderly people, people with disabilities, pregnant women and infants, people evacuating over large distances, people evacuating by car, etc.

No

Yes

Evacuate by

Alert Level **3** **Evacuation of the Elderly, Etc.**

Evacuate by

Alert Level **4** **Evacuation Instruction**

Three days before
72 hrs
before

Two days before
48 hrs
before

One day before
24 hrs
before

Directly before
9 hrs
before

Risk of weather conditions worsening in future

Weather conditions worsen

Disaster is likely

Disaster is highly likely

Disaster occurs or is imminent

Find more detailed information
on when flooding occurs!

Edogawa City Evacuation Information

Edogawa City Flooding Hazard
Map (main edition) pages 13 to 14



Edogawa City Disaster Prevention App

Search for "Edogawa City disaster prevention"
in the app store



iOS



Android

To receive or find information from
places other than the disaster
prevention app

Where to Get Information

Edogawa City Flooding Hazard
Map (main edition) pages 29 to 30



(Joint announcement by 5 cities of Koto)
**Information on announcing
long-distance evacuation**

Joint examination begins

**Information for voluntary
long-distance evacuation**
(call for long-distance evacuation)

**Long-distance evacuation
instruction**

**Vertical evacuation within
the area (emergency)**

Disaster occurs
Danger is imminent

(Emergency Safety Measures)

Actions to take

- Begin preparation for immediate evacuation
- Those who can evacuate at this point should evacuate to a safe place outside the City



- Elderly persons and other persons in need of special care should evacuate early to a safe place outside the City
- Those who can evacuate at this point should evacuate to a safe place outside the City



- **Evacuate immediately to outside the city**



- Since long-distance evacuation is not possible at this stage, evacuate to a building located in a higher place



Make sure to evacuate from dangerous places by this point

- Evacuate to a room in your home higher than the floodwaters



(Edogawa City will issue an advisory or JMA will make an announcement)

Weather and evacuation information

Actions to take

Alert
Level **1**
<Announced by JMA>

**Early advisory
information**

- Increase level of disaster preparedness



Alert
Level **2**
<Announced by JMA>

**Heavy Rain, Flood, or
Storm Surge Advisories**

- Begin preparation for immediate evacuation



Alert
Level **3**
<Issued by the City>

**Evacuation of
the Elderly, Etc.**

- Elderly persons and other persons in need of special care should evacuate at this point
- Those who can evacuate should begin evacuation



Alert
Level **4**
<Issued by the City>

**Evacuation
Instruction**

- **Begin evacuating everyone from dangerous areas**



- Evacuate to a building located in a higher place

Make sure to evacuate from dangerous places by this point

Alert
Level **5**
<Issued by the City>

**Emergency Safety
Measures**

- Evacuate to a room in your home higher than the floodwaters



Your personal long-distance evacuation plan

My timeline in the event of major flood damage

Long-distance evacuation mode When major flooding is expected

Filling In Information about Evacuation Points



Long-distance evacuation is required by all City residents in principle

Evacuation points outside of the City that you have secured by yourself

How to evacuate:

Long-distance evacuation

After the wind and rain have weakened, since you'll be exposed to rain

How to evacuate: **Local disaster prevention base**

Public facilities outside of the City where long-distance evacuation is possible

How to evacuate:

Long-distance evacuation
(public long-distance evacuation facility)

Those remaining will be isolated by floodwaters and forced to live in difficult conditions

How to evacuate: **Evacuation facility**
(elementary/junior high school, etc.)

Filling in My Timeline in the Event of Major Flood Damage



(Joint announcement by 5 cities of Koto)
Information on announcing long-distance evacuation

Response and preparedness <examples>

Space for filling in response by you or your family members

Three days before
72 hrs
before

Joint examination begins

Joint examination by the 5 cities of Koto will begin

Begin preparation for immediate evacuation
Those who can evacuate at this point should evacuate to a safe place outside the City

- Begin checking weather and typhoon information
- Inspect your home and surroundings for anything that could blow away
- Check contents of emergency bag, buy necessities
- Reserve hotels or other facilities in the long-distance evacuation area



Two days before
48 hrs
before

Information for voluntary long-distance evacuation
(Call for long-distance evacuation)

Call for voluntary evacuation to safe locations outside of the 5 cities of Koto

Elderly persons and other persons in need of special care should evacuate early to a safe place outside the City
Those who can evacuate at this point should evacuate to a safe place outside the City

- Begin checking river level information
- Confirm public transportation operation status
- Confirm evacuation point and route with the hazard map
- Begin preparation for immediate evacuation
- Begin evacuation of older relatives
- Contact family members



One day before
24 hrs
before

Long-distance evacuation instruction

There is the risk of a large-scale flood disaster
Information for beginning long-distance evacuation will be announced

Evacuate immediately to outside the City

- Notify neighbors
- Notify long-distance evacuation point of your evacuation
- Begin long-distance evacuation
- Evacuate to a local disaster prevention base



Directly before
9 hrs
before

Vertical evacuation within the area (emergency)

When there is not enough time to safely evacuate, information for switching to evacuation within the City will be announced

Since long-distance evacuation is not possible at this stage, evacuate to a nearby place where evacuation is possible

- Evacuate to a local disaster prevention base or evacuation facility
- Evacuate to a building located in a higher place nearby



Disaster occurs
Danger is imminent

(Emergency Safety Measures)

Make sure to evacuate from dangerous places by this point

- Evacuate to a room in your home higher than the floodwaters



Memo section for jotting down things of note

For example...what you noticed when participating in evacuation drills, points of reflection after an actual evacuation, etc.



Personal evacuation plan: My timeline

When major flooding is not expected

Filling In Information about Evacuation Points

How to evacuate will depend on the flooding conditions around your home, along with the floor level and structure of your home

Whether it is possible to stay in place depends on specific flood estimations

How to evacuate:

Stay in place at home

After the wind and rain have weakened, since you'll be exposed to rain

How to evacuate:

Local disaster prevention base

Evacuation points that you have secured by yourself in safer areas

How to evacuate:

Secure an evacuation point by yourself

The first and second floors can become flooded

How to evacuate: **Evacuation facility**
(elementary/junior high school, etc.)

Filling In My Timeline

(Edogawa City or JMA will issue an advisory or make an announcement)

Weather and evacuation information

Response and preparedness <examples>

Space for filling in response by you or your family members

Risk of weather conditions worsening in future

Alert Level

1 <Announced by JMA>

Early advisory information

Increase level of disaster preparedness

- ☐ Begin checking weather and typhoon information
- ☐ Inspect your home and surroundings for anything that could blow away
- ☐ Buy necessities



Weather conditions worsen

Alert Level

2 <Announced by JMA>

Heavy Rain, Flood, or Storm Surge Advisories

Begin preparation for immediate evacuation

- ☐ Begin checking river level information
- ☐ Confirm public transportation operation status
- ☐ Check contents of emergency bag
- ☐ Begin long-distance evacuation if possible



Disaster is likely

Alert Level

3 <Issued by the City>

Evacuation of the Elderly, Etc.

Elderly persons and other persons in need of special care should evacuate at this point
Those who can evacuate should begin evacuation

- ☐ Confirm evacuation point and route with the hazard map
- ☐ Begin preparation for immediate evacuation
- ☐ Begin evacuation of older relatives



Disaster is highly likely

Alert Level

4 <Issued by the City>

Evacuation Instruction

Begin evacuating everyone from dangerous places

- ☐ Notify neighbors
- ☐ Evacuate to the home of a relative or friend in a safe place
- ☐ Evacuate to a local disaster prevention base or evacuation facility
- ☐ Evacuate to a building located in a higher place



Make sure to evacuate from dangerous places by this point

- ☐ Evacuate to a room in your home higher than the floodwaters



Disaster occurs or is imminent

Alert Level

5 <Issued by the City>

Emergency Safety Measures

Disaster occurs
Danger is imminent

Memo section for jotting down things of note

For example...what you noticed when participating in evacuation drills, points of reflection after an actual evacuation, etc.



What should I start thinking about first?

Prepare in advance using the Edogawa City Flooding Hazard Map (main edition) and the disaster prevention app.



- 1** Check the potential flooding conditions at your home and work out what the hazards are around your house.

Large-size map (major flood damage)

▶ Go to page 2 (pocket)



For information on how to install

the Edogawa City Disaster Prevention App

▶ Go to page 9

**Hazards Around the House
(Space for Filling In)**

Edogawa City Flooding
Hazard Map (main edition)
page 47



- 2** Confirm the best evacuation option for you based on the situation at the time.

Where should I evacuate to in the event of flooding? ▶ Go to pages 6 to 7

What information is announced in the event of flooding? ▶ Go to pages 8 to 9

**Considering Evacuation in
the Event of Flooding**

Edogawa City Flooding
Hazard Map (main edition)
pages 13 to 22



- 3** Consider multiple evacuation options in advance that will enable you to handle a variety of different situations.

Personal Long-Distance Evacuation Plan/
Personal Evacuation Plan

▶ Go to pages 10 to 11

**Filling In Information about
Evacuation Points**

Edogawa City Flooding Hazard
Map (main edition) page 48



- 4** Imagine flooding conditions to create your "My Timeline."

Personal Long-Distance Evacuation Plan/
Personal Evacuation Plan

▶ Go to pages 10 to 11

**My Timeline (Space for
Filling In)**

Edogawa City Flooding Hazard
Map (main edition) pages 49 to 52



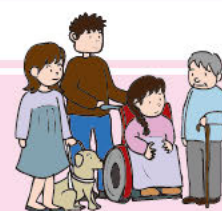
- 5** Check the items you and your family will need during an evacuation and prepare emergency supplies, along with items to keep stockpiled at home.

**Emergency Supplies and
Items to Stockpile**

Edogawa City Flooding Hazard
Map (main edition) page 53



Support for people who may find it difficult to evacuate alone



The City designates those who require priority support for evacuation actions in the event of a disaster as persons requiring support for evacuation actions and creates a list of these persons in advance. The information on this list will be used to create individual evacuation plans. It will also be useful in confirming the safety of individuals and giving evacuation guidance in the event of a disaster in cooperation with police departments, fire departments, social welfare councils, and other organizations.

For more information on eligibility requirements, etc., please visit the City's official homepage.

Edogawa City official homepage

URL <https://www.city.edogawa.tokyo.jp/e094/kenko/fukushikaigo/info/youhairyo.html>



Issued by Edogawa City

Planning/Editing by Disaster Prevention and Risk Management Section,
Risk Management Department of Edogawa City

Supervised by Toshitaka Katada, Project Professor of the University of Tokyo, Graduate School of
Interdisciplinary Information Studies, Disaster Prevention Advisor of Edogawa City

**Contact regarding this flood disaster
hazard map digest edition**

Disaster Prevention and Risk Management Section,
Risk Management Department of Edogawa City
TEL. 03-5662-1992 FAX. 03-3652-9891