

Example Your Personal Long-distance Evacuation Plan

Plan by using the hazard map



STEP 1
Check
what could happen
to your home
using
the hazard map

My house is...
2 stories
How many floors would be flooded
2 Floor
How long would flooding last
1 to 2 weeks(or more)

STEP 2
Decide Your Personal Long-distance Evacuation Point

Fill in details of the Long-distance evacuation point

Long-distance evacuation point
Relative's house in Chiba

Local disaster prevention base
Konodai Plateau

Evacuation facilities (elementary/junior high schools, etc.) and high-rise points on nearby stable buildings to escape flooding
Above the 2nd floor of Minami-Koiwa Daini ES

How to get to long-distance evacuation point

☒ Train
(Koiwa Station ~ Tokiwadaira Station)

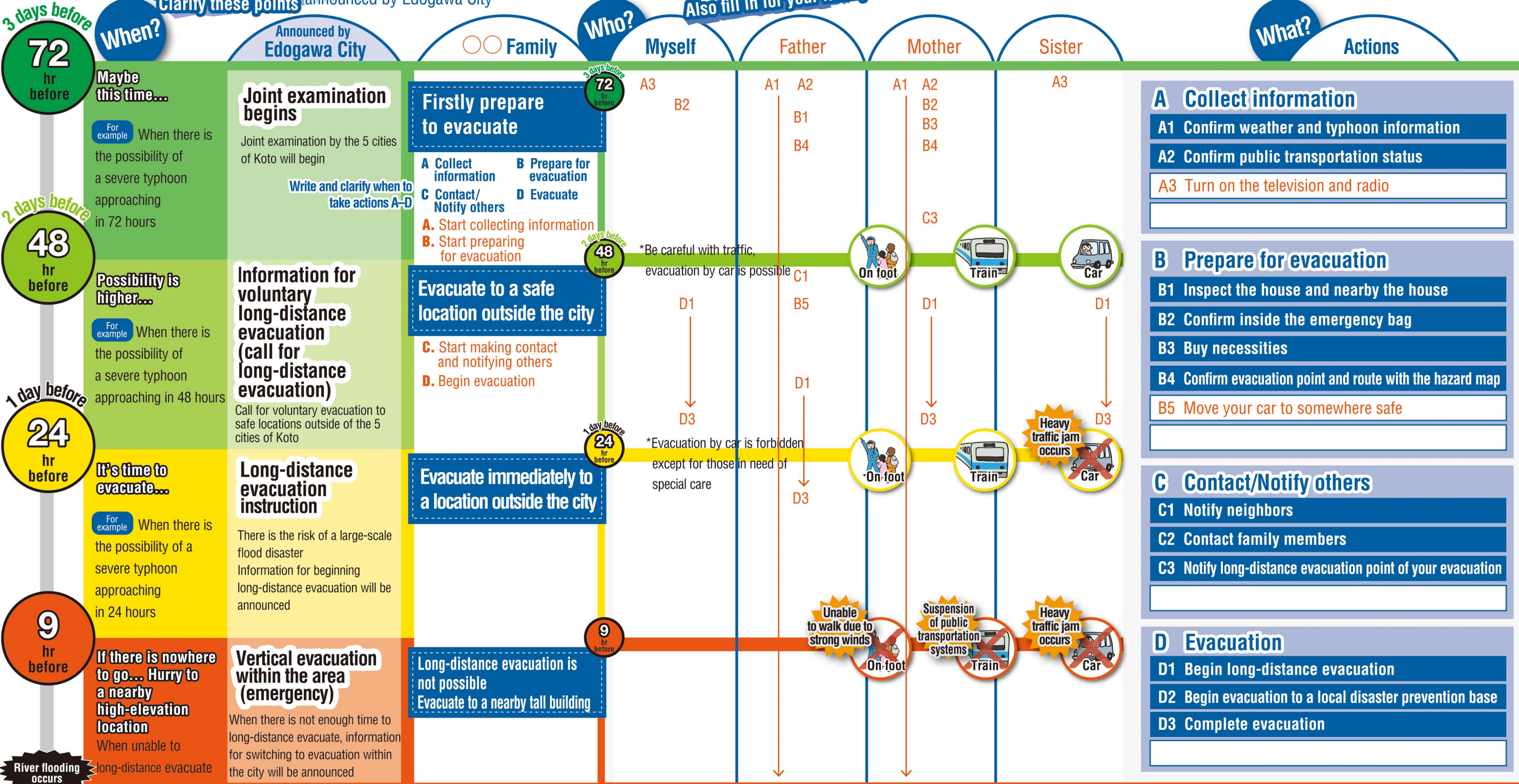
☒ Bus
(Higashi-Koiwa Bus stop ~ Tokiwadaira Bus stop)

☐ On foot/Bicycle

☐ Car *Forbidden after long-distance evacuation instruction except for those in need of special care

STEP 3
When? Who? What?
Clarify these points

Make sure who does what when information notifying long-distance evacuation has been announced by Edogawa City



Your Personal Long-distance Evacuation Plan

Plan by using the hazard map



STEP 1

Check what could happen to your home using the hazard map

My house is... stories

How many floors would be flooded

Floor

How long would flooding last

STEP 2

Decide Your Personal Long-distance Evacuation Point

Fill in details of the Long-distance evacuation point

Long-distance evacuation point

Local disaster prevention base

Evacuation facilities (elementary/junior high schools, etc.) and high-rise points on nearby stable buildings to escape flooding

How to get to long-distance evacuation point

☐ Train (Station ~ Station)

☐ Bus (Bus stop ~ Bus stop)

☐ On foot/Bicycle

☐ Car *Forbidden after long-distance evacuation instruction except for those in need of special care

STEP 3

When? Who? What? Clarify these points

Make sure who does what when information notifying long-distance evacuation has been announced by Edogawa City

3 days before

72 hr before

When?

Maybe this time...

For example When there is the possibility of a severe typhoon approaching in 72 hours

2 days before

48 hr before

Possibility is higher...

For example When there is the possibility of a severe typhoon approaching in 48 hours

1 day before

24 hr before

It's time to evacuate...

For example When there is the possibility of a severe typhoon approaching in 24 hours

9 hr before

9 hr before

If there is nowhere to go... Hurry to a nearby high-elevation location

When unable to long-distance evacuate

River flooding occurs

Announced by Edogawa City

Family

Who?

Myself

Also fill in for your family

What?

Actions

Joint examination begins

Joint examination by the 5 cities of Koto will begin

Write and clarify when to take actions A-D

Firstly prepare to evacuate

- A Collect information
- B Prepare for evacuation
- C Contact/Notify others
- D Evacuate

Evacuate to a safe location outside the city

Evacuate immediately to a location outside the city

Long-distance evacuation is not possible
Evacuate to a nearby tall building

Information for voluntary long-distance evacuation (call for long-distance evacuation)

Call for voluntary evacuation to safe locations outside of the 5 cities of Koto

Long-distance evacuation instruction

There is the risk of a large-scale flood disaster
Information for beginning long-distance evacuation will be announced

Vertical evacuation within the area (emergency)

When there is not enough time to long-distance evacuate, information for switching to evacuation within the city will be announced

3 days before

2 days before

1 day before

9 hr before

*Be careful with traffic, evacuation by car is possible

*Evacuation by car is forbidden except for those in need of special care



A Collect information

- A1 Confirm weather and typhoon information
- A2 Confirm public transportation status

B Prepare for evacuation

- B1 Inspect the house and nearby the house
- B2 Confirm inside the emergency bag
- B3 Buy necessities
- B4 Confirm evacuation point and route with the hazard map

C Contact/Notify others

- C1 Notify neighbors
- C2 Contact family members
- C3 Notify long-distance evacuation point of your evacuation

D Evacuation

- D1 Begin long-distance evacuation
- D2 Begin evacuation to a local disaster prevention base
- D3 Complete evacuation