

English version

Flood Disaster

Flooding/
High Tide
Flooding

Edogawa City Hazard Map



About foreign language versions

この江戸川区水害ハザードマップは、日本語版・英語版・中国語版・韓国語版の4種類があります。区役所本庁舎と各事務所で配布しております。また、区のホームページからダウンロードすることもできます。

This Edogawa City Flood Hazard Map is available in four languages: Japanese, English, Chinese, and Korean. It can be obtained from the main building and branch offices of Edogawa City Hall. It can also be downloaded from the Edogawa City Official Homepage.

本江戸川区洪水災害地図備有日文版、英文版、中文版、韩文版4类，在区政府主楼和各事务所均可领取。此外，也可从江戸川区网站下载。

본 에도가와구의 수해 해저드맵(재해예측지도)은 일본어판, 영어판, 중국어판, 한국어판까지 총 4가지가 있습니다. 구청 본청사와 각 사무소에서 배부 중입니다. 또한, 구 홈페이지에서도 다운로드 하실 수 있습니다.



Edogawa City

Flood Disaster

Flooding/
High Tide
Flooding

How to use

STEP 1

Must read

Learn/Notice

Read this booklet to understand “**what would happen**” if a flood disaster occurred in Edogawa City, and “**what should I do**” in order to save yourself and others.



Make **sure** to read up to P. 10

STEP 2

Must read

Plan/Decide

Decide your flood hazard evacuation point in advance. Also plan evacuation routes.

Plan and decide the long-distance evacuation point and routes

Decide how to take action when at work or school

Confirm with the map

Fill in “Your Personal Long-distance Evacuation Plan”



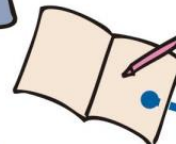
STEP 3

Prepare

Confirm items to bring with you when evacuating, and always be ready.

Make sure always to be ready

Make a checklist for confirmation



STEP 4

Think of others/ Communicate

Apart from yourself, check how families or other important people to you will take action, and communicate with each other. It is important for everyone in the community to cooperate.

Confirm and contact people you will be evacuating together with, or those you need to inform

Fill in the back cover



Hazard Map

Contents

Page

	What is Edogawa City like?	P. 03-04
	What would happen if a flood disaster occurred?	P. 05-06
	What should I do if a flood disaster occurs?	P. 07-08
	Information on announcing evacuations	P. 09-10

Learn/Notice



Hazard Map




Your Personal Long-distance Evacuation Plan



Available in the pocket at the end of this booklet

Plan/Decide

	Being prepared for evacuation	P. 11-12
	List of other evacuation points	P. 13-14
	when unable to long-distance evacuation	
	Being prepared for remaining in one place	P. 15-16
	when unable to long-distance evacuation	

Prepare



The importance of communities

P. 17-18

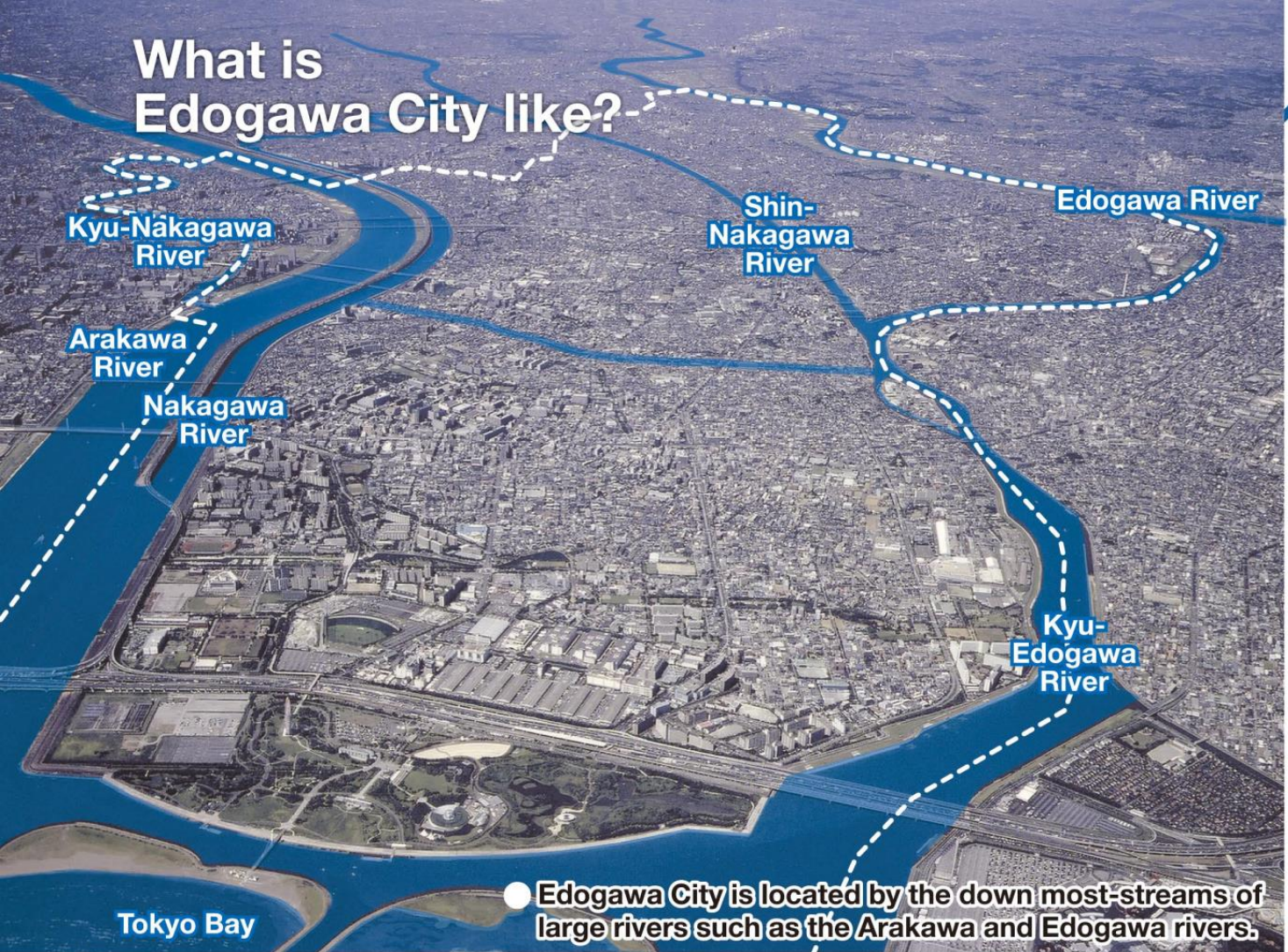
Think of others /Communicate



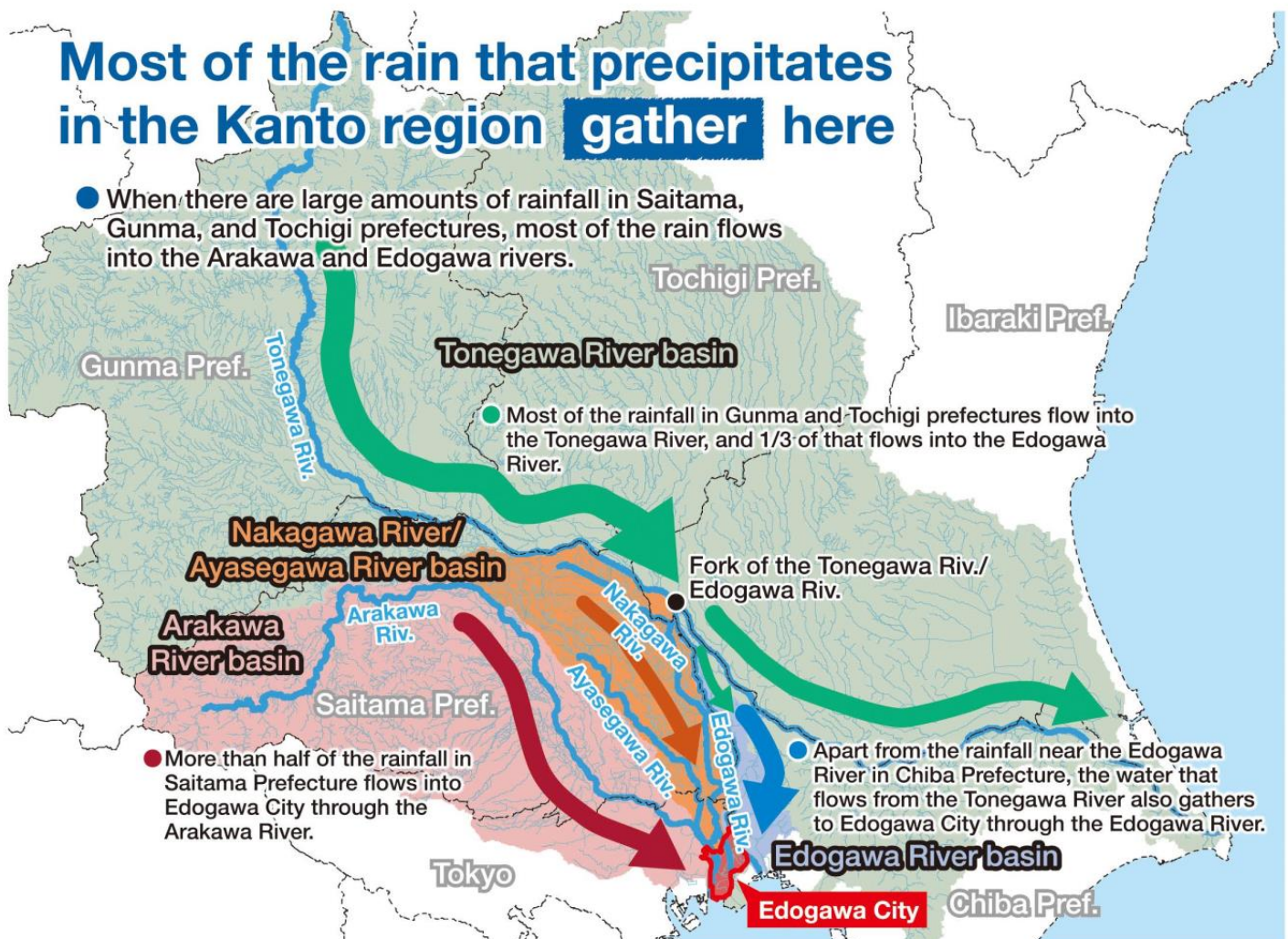
Areas are affected differently by flood disasters	P. 19-20
When a High Tide Flooding occurs	P. 21-22
In the event of Arakawa River flooding	P. 23-24
In the event of Edogawa River flooding	P. 25-26
In the event of Tonegawa River flooding	P. 27-28
In the event of Nakagawa River (Government controlled section) flooding	P. 29-30
In the event of flooding from small and medium-sized river flooding such as Nakagawa River (Metropolitan controlled section) /Shin-Nakagawa River and Inland Flooding	P. 31-32
In the event of Inland Flooding	P. 33-35
About the Edogawa City Disaster Prevention App	P. 36
About the Large-Scale Flood Disaster Voluntary Wide-Area Evacuation Subsidy	P. 37

Expected inundation area map

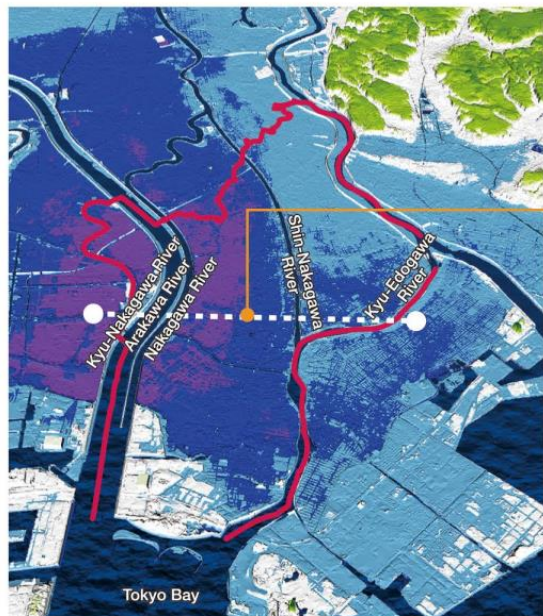
What is Edogawa City like?



Most of the rain that precipitates in the Kanto region gather here

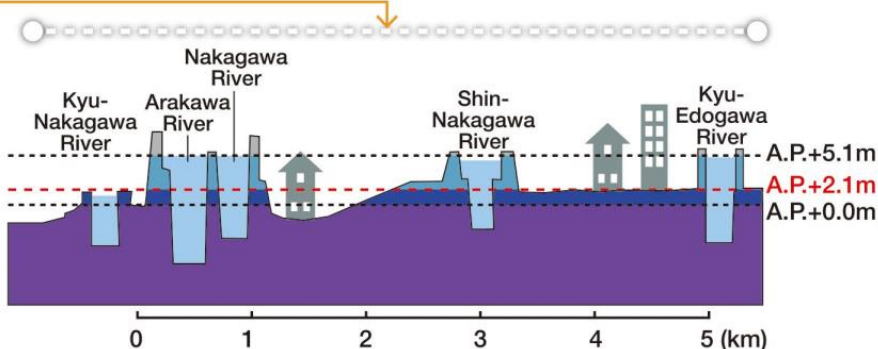
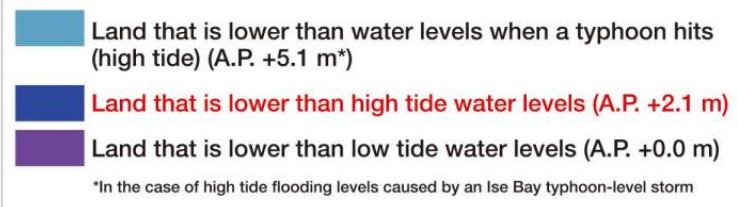


Below Sea Level Area



- Edo City is surrounded by the Arakawa River, Edogawa River, and Tokyo Bay; therefore 70% of its land area is below sea level*.

*Land that is lower than high tide water levels



- Water levels of nearby rivers will rise above ground elevations in most areas of Edo City, even when it is not torrential rain or a typhoon.

What is Edo City like?

Flood disasters in the past...

- A typhoon hit when the Tokyo Bay was at high tide. Tide levels rose, and the city was flooded. (Typhoon Kitty in August 1949)



Nearby the south exit of Hirai Station
(Photo source: Edogawa City)

- Water that overflowed from the Tonegawa River reached Edo City after four days, and flooding continued for over half a month. (Typhoon Kathleen in September 1947)



Nearby Hon-Isshiki
(Sugawarabashi Bridge)
(Photo source: Edogawa City)

What would happen to Edo City if a flood occurred today?

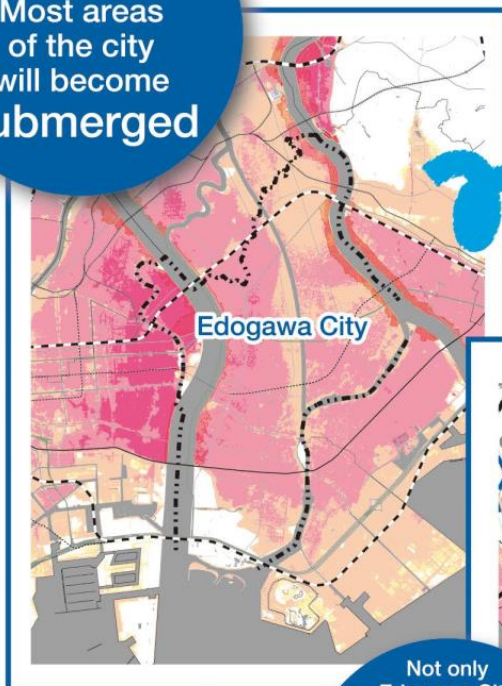
If largest expected typhoons or torrential rain caused the Arakawa and Edogawa rivers to overflow... caused a high tide flooding...

What would happen?

- Large scale flood disasters caused by flooding and high tide flooding are occurring around the world as a result of unprecedented typhoons or torrential rain that was led by global warming.

What would happen?

Most areas of the city will become submerged



Since many areas of Edogawa City are at below sea level, most of the city will become submerged.

Is it only Edogawa City?

Expected inundation area map of Arakawa River flooding, Edogawa River flooding, and High tide flooding (maximum expected scale)

Not only Edogawa City
Most areas in the 5 cities of Koto would become submerged

Apart from Edogawa City, most areas in the 5 cities of Koto* will become submerged.

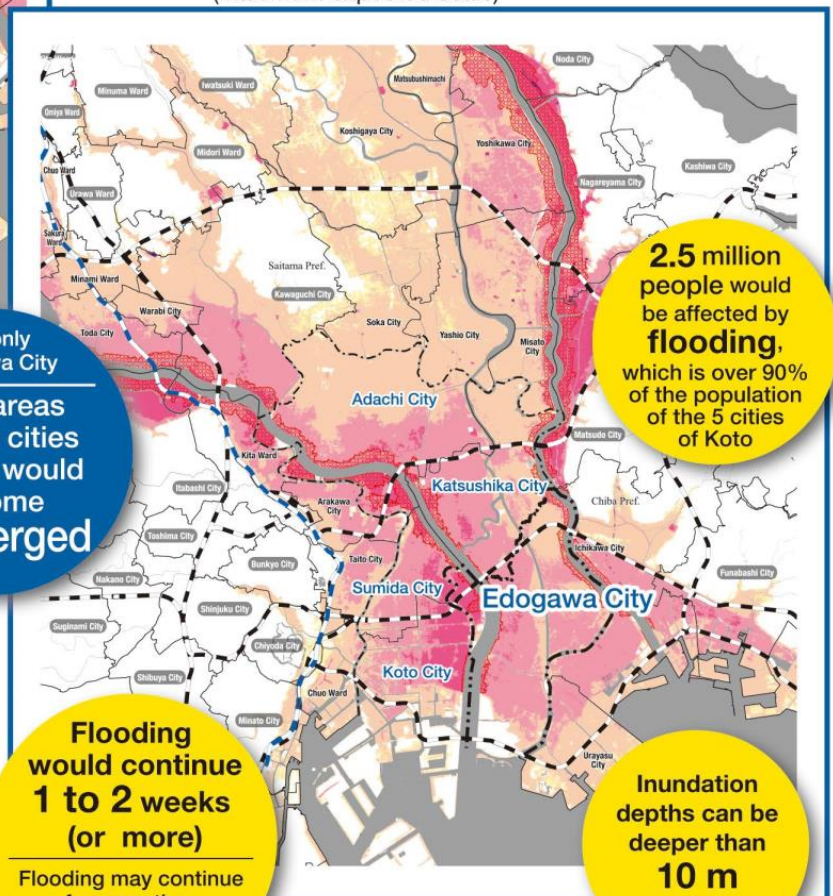
*Edogawa City, Sumida City, Koto City, Adachi City and Katsushika City

Flooding would continue 1 to 2 weeks (or more)

Flooding may continue for more than 2 weeks at the longest

2.5 million people would be affected by flooding, which is over 90% of the population of the 5 cities of Koto

Inundation depths can be deeper than 10 m at the most



Public facilities such as the City Office will also become heavily submerged in the event of flooding.

How Edogawa City Office would look



Before flooding

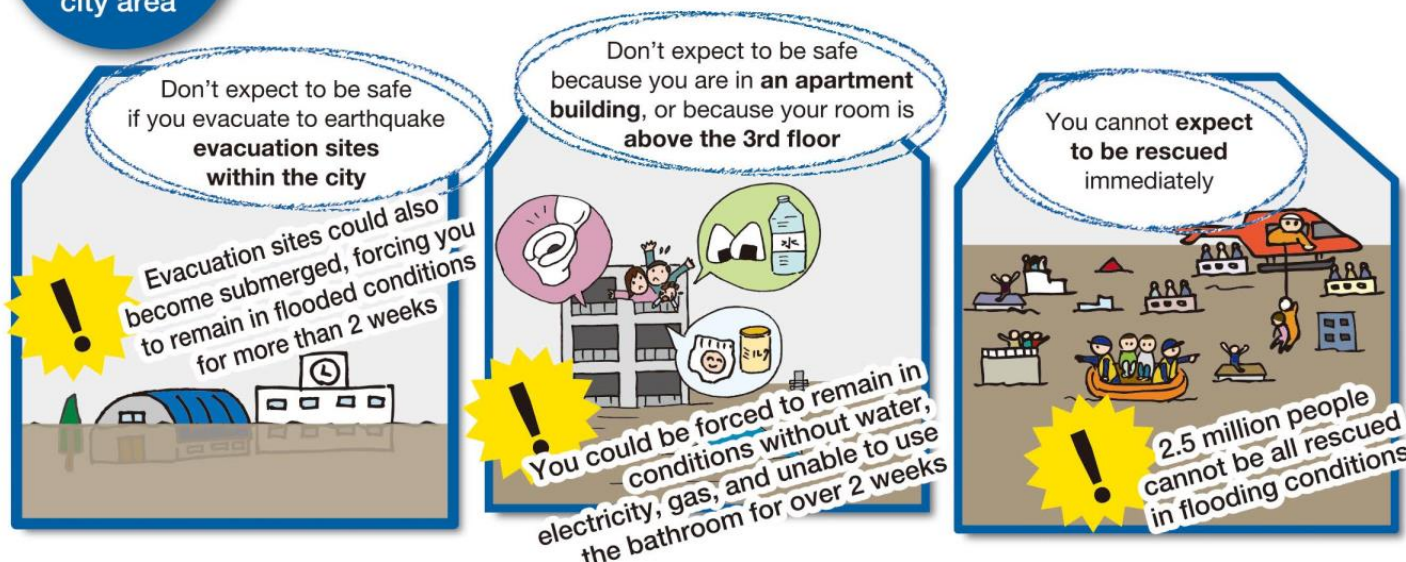


After flooding

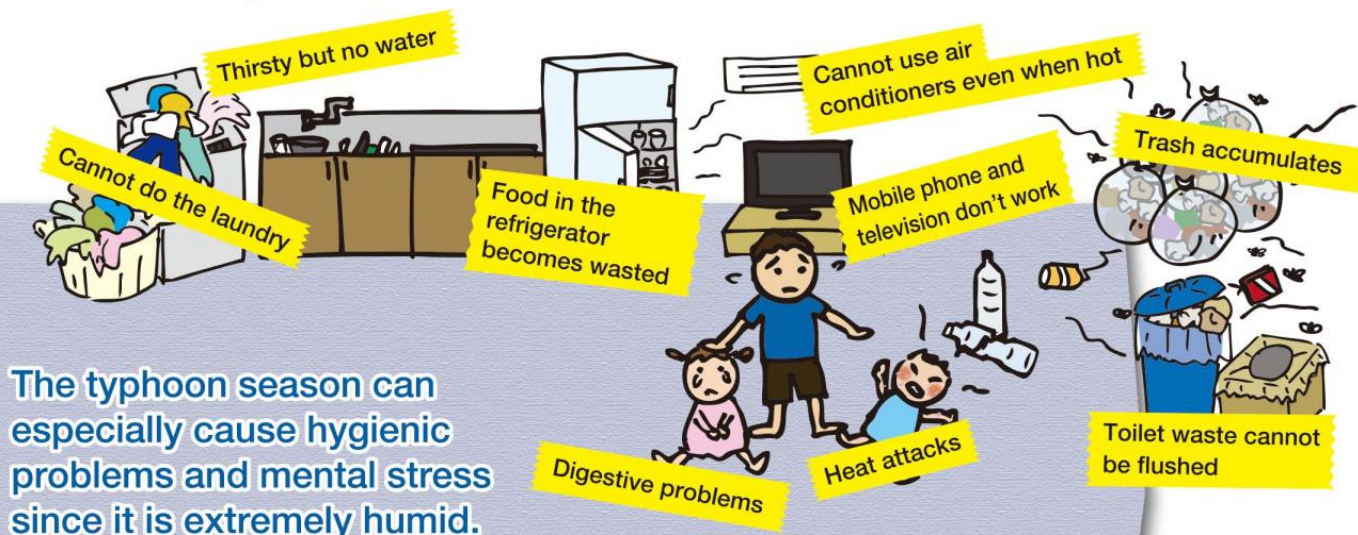
You must **not** remain within your home or city area

Flooding may continue for more than 2 weeks at the longest if the Arakawa or Edogawa rivers overflow, or if there is a high tide flooding.

What would happen?



You may have to endure conditions in flood without water, electricity, gas, and unable to use the bathroom for more than 2 weeks until the water withdrawals.



If largest expected typhoons or torrential rain caused the Arakawa and Edogawa rivers to overflow... caused a high tide flooding...

What should I do?

- What should you do if an unprecedented scale typhoon or torrential rain is expected to hit?



Do not remain in the city!

What should I do?

Evacuate to safe areas outside the city,

or areas with no risk of river flooding or landslides

Leave areas within the 5 cities of Koto, and evacuate to areas with high elevation or areas with no risk of flooding (long-distance evacuation to areas outside the city).



What should I do?

Confirm evacuation points on your own

If you cannot reach long-distance evacuation points...



Firstly, confirm other evacuation points on your own by contacting homes of relatives/friends or accommodation facilities/workplaces that are located outside the city.



You can check all areas with risk of river flooding and landslides.

MLIT Multi-layered hazard map



<https://disaportal.gsi.go.jp/index.html>



Evacuate to local disaster prevention bases

Safe areas that will not be submerged when flood disasters occur within or nearby the city

If you cannot reach local disaster prevention bases...

Evacuate to evacuation facilities (elementary/junior high schools, etc.)

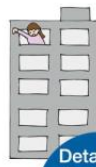


Emergency evacuation facilities in case there is not enough time to evacuate or evacuation becomes difficult

Evacuate to high-rise points on nearby stable buildings



Avoid worst case scenarios
Plan beforehand in case of emergencies



Details of evacuation points are mentioned in P13-14.

Major congestion and traffic jams will occur if 2.5 million people (over 90% of the population of the 5 cities of Koto) try to long-distance evacuation altogether (to areas outside the city).

Major congestion and traffic jams
will occur even if it is only the people of Edogawa City evacuating!

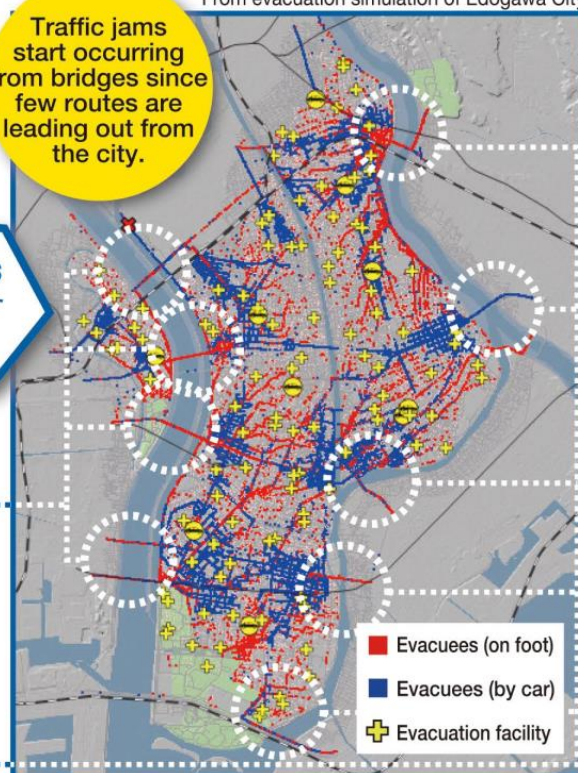
If everyone evacuates altogether...



Confusion due to traffic jams, and large accidents such as pedestrian stampedes

From evacuation simulation of Edogawa City

Traffic jams start occurring from bridges since few routes are leading out from the city.

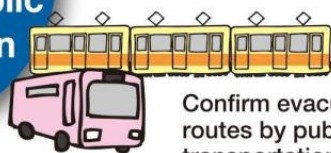


What should I do?

What should I do?

Evacuate early using public transportation

Try to evacuate early by using public transportations.



Confirm evacuation routes by public transportation.

If wind and rain become stronger when a large typhoon approaches...



Train schedules change or train services may stop!
It becomes difficult to travel on foot

Gather as much information as you can so as not to miss the timing to evacuate.

What should I do?

Gather as much information as possible



How wind force can affect evacuation

Wind force (forecast term) Average speed (per second)

Strong wind Less than 15 m-20 m

Unable to walk against the wind, and some people may fall.



Very strong wind Less than 20 m-25 m

Unable to stand unless you hold on to something. Difficult to drive at regular speed.



Very strong wind Less than 25 m-30 m

Staying outdoors becomes highly dangerous. Trucks that are running can be overturned.



Gale force wind Over 30 m

Many trees could fall. Some concrete block walls may collapse.



Information on announcing evacuations

- When there is the possibility of large typhoons or torrential rain requiring long-distance evacuation, information regarding long-distance evacuation will be announced in stages by the 5 cities of Koto jointly.



In the case of high tide flooding

As a guideline...

Forecast of a typhoon with a central pressure lower than 930 hPa approaching Tokyo

In the case of a flood

As a guideline...

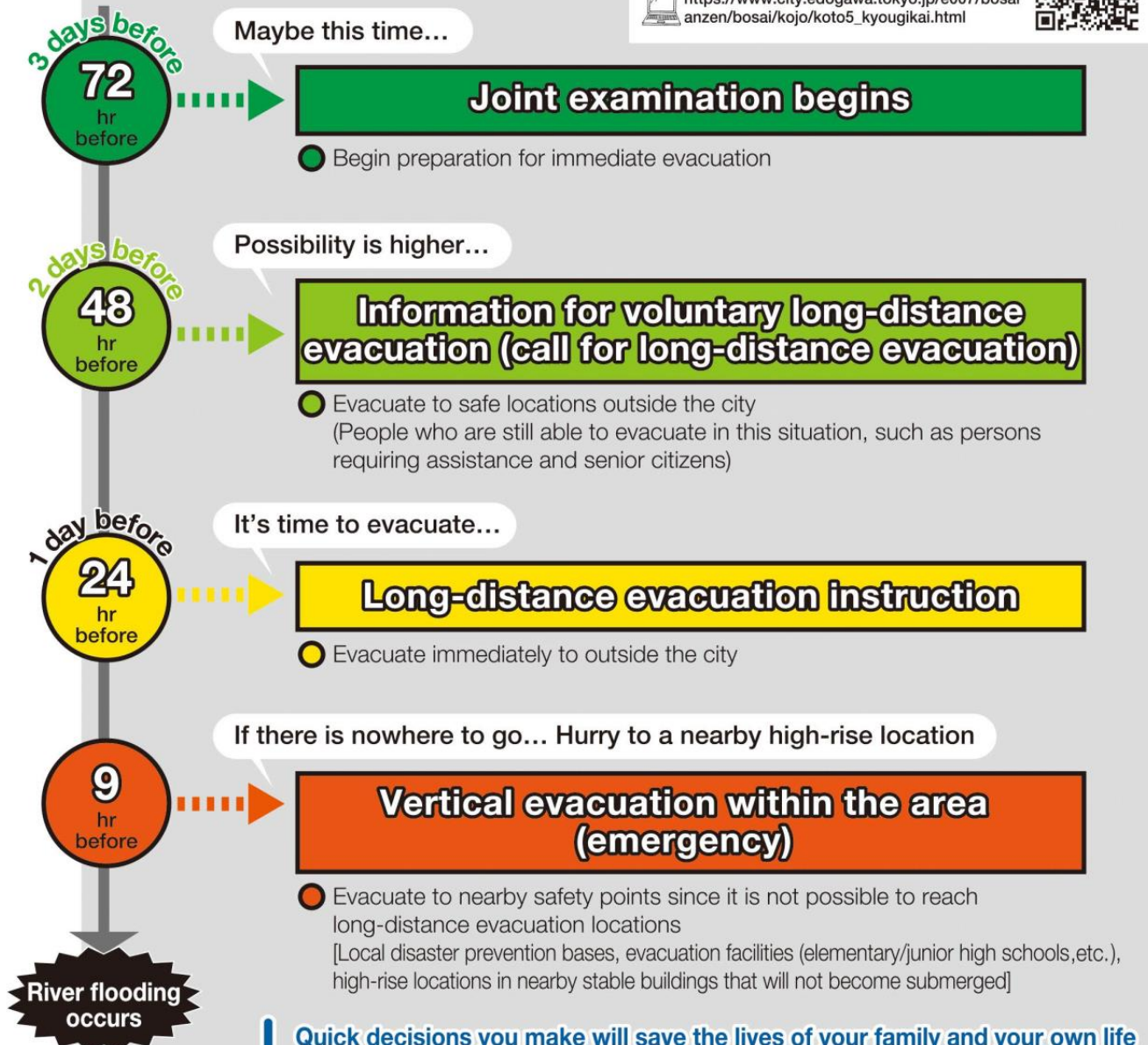
Forecast of total rainfall amount over 3 days of the Arakawa River basin

Information on announcing long-distance evacuation

Details regarding various standards can be confirmed

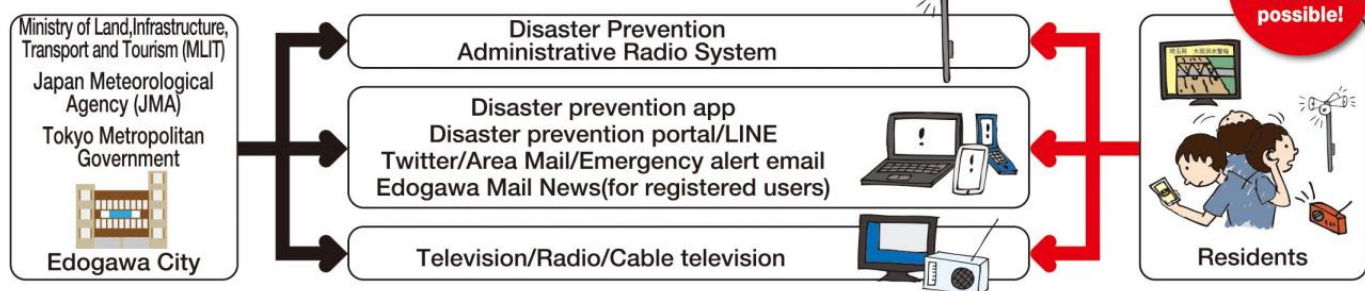
Edogawa City official homepage
(Long-distance Evacuation Promotion Council of the 5 cities of Koto)

https://www.city.edogawa.tokyo.jp/e007/bosai_anzen/bosai/kojo/koto5_kyougikai.html



Quick decisions you make will save the lives of your family and your own life
Make sure to collect as much information beforehand and evacuate early

How information is communicated



How to receive information

Receive by email

Edogawa Mail News **Advanced registration required**

Evacuation information and evacuation site information of Edogawa City are sent by email to registered mobile phones and computers.

How to register

- ① Send an email to **t-edogawa@sg-p.jp** without a subject and text. (The email address can also be scanned with the two-dimensional code on the right)
- ② An email with the registration URL will be automatically sent to your email address.
- ③ Access the registration URL, follow instructions to complete registration.

How to check information

Check with your smartphone or PC

Disaster prevention apps and the disaster prevention portal provide real-time information on disaster prevention, such as information on the damage overview and the available evacuation centers in the city.

Edogawa City Disaster Prevention App



- Key Features**
- Evacuation information
 - Damage information
 - Transportation and Lifeline Information
 - Community features (apps only)

Please search for "Edogawa City Disaster Prevention" in the app store or use the two-dimensional code at the right of the screen to download.



iOS



android

Edogawa City Disaster Prevention Portal



<https://bosai.city.edogawa.tokyo.jp/>



- You can check the same content as the disaster prevention app (excluding the community features).
- It supports 108 languages.

LINE and Twitter also provide information on disaster prevention.

Edogawa City LINE official account



- Read the two-dimensional code at the right of the screen and add "friend"
- LINE ID @edogawa_city



Edogawa City official Twitter



https://twitter.com/edogawa_city

- Account name @edogawa_city
- Hashtag #江戸川区



Listen to the disaster prevention administrative radio system

Outdoor broadcasting devices in parks, while schools and nursery schools have indoor broadcast receivers.

Disaster prevention broadcast confirmation number



03-3652-1284

Details of the broadcast can be confirmed on the homepage or Twitter account of Edogawa City

Check on radio



AM
FM

NHK Radio 1 594 kHz
FM Edogawa 84.3 MHz

Check on television

With data broadcasting televisions, weather information, etc. can be confirmed by pressing the **d** button.



Digital terrestrial broadcasting NHK G **d button**

For those living in residences (including apartments) that have access to J:COM Edogawa's cable television channels, information can be viewed for free, regardless of subscription to fee-based services of J:COM.



Cable television J:COM Channel emergency broadcasting

Being prepared for evacuation

- Organize emergency items that will be necessary at evacuation points or during evacuation, and decide evacuation points as well as evacuation routes.
- Be always prepared so you can immediately begin evacuation in case of emergencies.



1. Plan for long-distance evacuation by using the hazard map

Fill in the “Your Personal Long-distance Evacuation Plan”

Available in the pocket at the end of this booklet



STEP 1 Confirm what will happen to your home when a flood or high tide flooding occurs by using the hazard map

The hazard map shows the “**depth**” of inundation levels and “**time**” for duration of floods in your home or at workplaces.



STEP 2 Confirm long-distance evacuation points and routes

Confirm long-distance evacuation points by contacting homes of relatives/friends or accommodation facilities/workplaces that are located outside the city. Decide evacuation routes by public transportation in order to avoid traffic jams.



Fill in the “Long-distance Evacuation Points” on the back cover

STEP 3 Confirm who does what when Edogawa City announces information on long-distance evacuation

Gathering as much information as possible and advanced preparation is necessary for long-distance evacuation. Plan how to evacuate and details of how to take action so that you can evacuate calmly.



2. Prepare necessary items for evacuation

Be prepared for immediate evacuation in case of an emergency.

Necessary items will vary depending on family members such as infants, seniors, or those with health conditions.

When taking items with you, use a backpack to keep both hands free and only bring the absolute minimum amount of essential items.

Wear clothes that are easy to move around in when evacuating



Things to keep in the backpack

- | | | |
|--|---|---|
| <input type="checkbox"/> Valuables | Wallet, money (10-yen coins for public telephones), bank book, stamp, health insurance certificate (copy also acceptable), etc. | |
| <input type="checkbox"/> Mobile phone | <input type="checkbox"/> Portable radio | <input type="checkbox"/> Battery, charger, etc. |
| <input type="checkbox"/> Flashlight | <input type="checkbox"/> Minimum amount of food and drinking water | <input type="checkbox"/> Towel, tissue |
| <input type="checkbox"/> Standard medicines, medicine notebook | <input type="checkbox"/> Change of clothing | <input type="checkbox"/> Plastic bag |
| <input type="checkbox"/> Rain gear | <input type="checkbox"/> Sanitary items | <input type="checkbox"/> Family photo |
- etc.

Useful items

- | | | | | |
|------------------------------------|----------------------------------|---|--|--------------------------------------|
| <input type="checkbox"/> Wet wipes | <input type="checkbox"/> Mask | <input type="checkbox"/> Large trash bag | <input type="checkbox"/> Groundsheet | <input type="checkbox"/> Work gloves |
| <input type="checkbox"/> Hat | <input type="checkbox"/> Whistle | <input type="checkbox"/> Simple eating utensils such as chopsticks and paper plates | <input type="checkbox"/> Writing tools | etc. |

Items that may be necessary according to family members

Infants	Baby food, powder milk, diaper, baby wipes, etc.	Those with health conditions	Contact of attending doctor, personal medication, home treatment items, etc.
Seniors	Dentures, nursing care food, adult diapers, etc.	Pets	Leash, cage, toilet items, pet food, etc.

3. Confirm emergency contacts

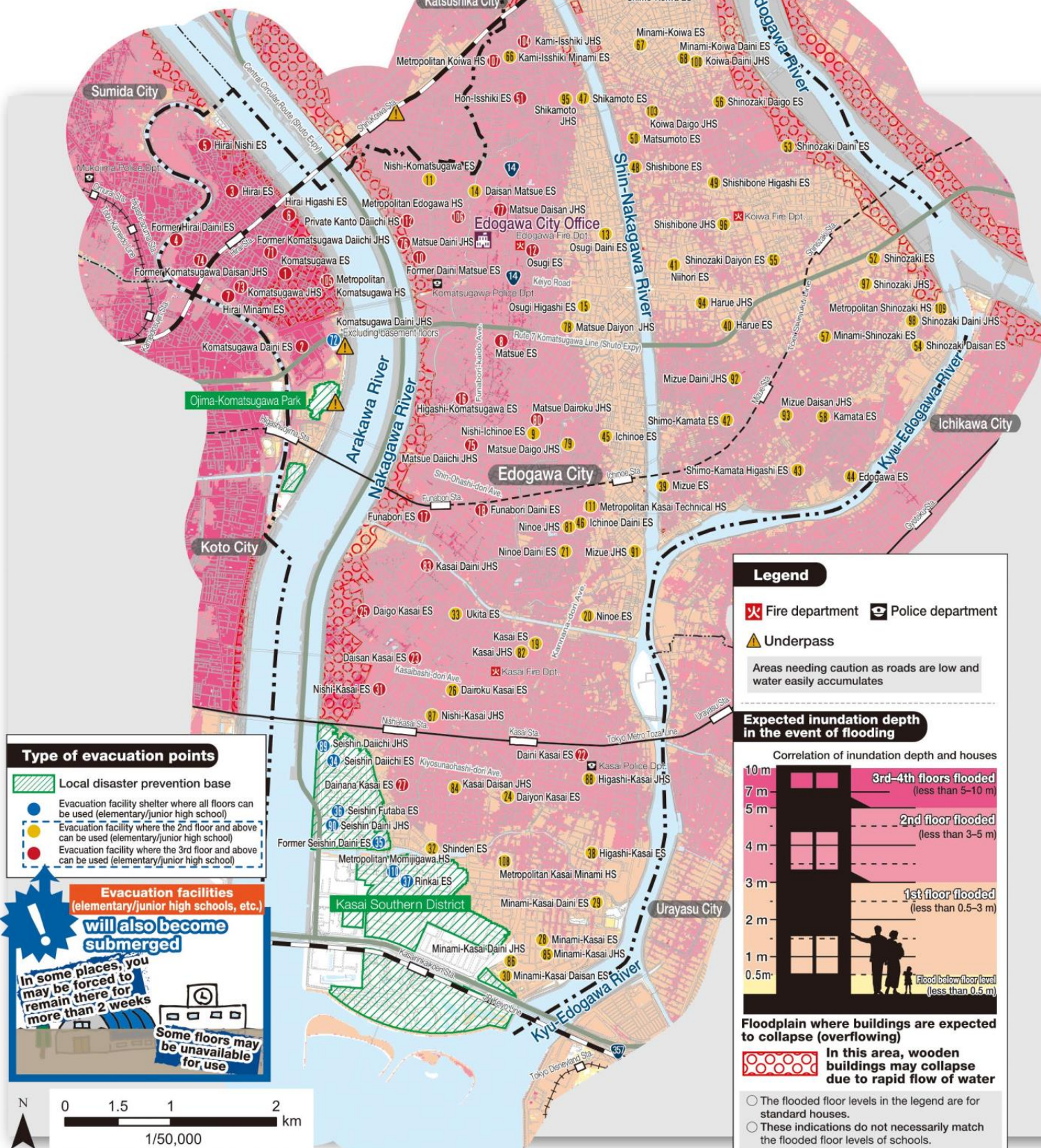
Fill in contacts of your family and neighbors. Also fill in contacts of those to notify before evacuating, and those you must evacuate together with.

Fill in the "Emergency Contacts" on the back cover



List of other evacuation points when unable to long-distance evacuate

Evacuate to locations that are as safe as possible to protect yourself



Evacuate to local disaster prevention bases

 on the map

Safe locations that will not become submerged if flood disasters occur within or nearby the city

Kasai Southern District Ojima-Komatsugawa Park Konodai Plateau



When unable to reach local disaster prevention bases...

Evacuate to Evacuation facilities (elementary/junior high schools, etc.)

Emergency evacuation facilities in case there is not enough time to evacuate or evacuation becomes difficult

On the map
 All floors can be used
 The 2nd floor and above can be used
 The 3rd floor and above can be used

Evacuate to high-rise points on nearby stable buildings

Avoid worst case scenarios
Plan beforehand in case of emergencies



Evacuation facility (Elementary and Junior High Schools)

No.	Elementary School Name	Address	Phone
1	Komatsugawa ES	4-1-23 Hirai	3685-4600
2	Komatsugawa Daini ES	3-6-4 Komatsugawa	3681-4319
3	Hirai ES	6-35-1 Hirai	3613-9311
4	Former Hirai Daini ES	6-1-17 Hirai	—
5	Hirai Nishi ES	7-22-24 Hirai	3612-9498
6	Hirai Higashi ES	4-28-9 Hirai	3681-0957
7	Hirai Minami ES	3-3-1 Hirai	3681-4532
8	Matsue ES	1-16-5 Matsue	3652-7146
9	Nishi-Ichinoe ES	7-17-1 Matsue	3651-4845
10	Former Daini Matsue ES	2-16-20 Matsushima	—
11	Nishi-Komatsugawa ES	3-30-6 Matsushima	3651-2570
12	Osugi ES	2-16-15 Chuo	3651-0561
13	Osugi Daini ES	3-11-1 Osugi	3653-4401
14	Daisan Matsue ES	4-13-1 Chuo	3653-5348
15	Osugi Higashi ES	2-8-5 Nishi-Ichinoe	3652-2194
16	Higashi-Komatsugawa ES	3-27-1 Higashi-Komatsugawa	3652-7413
17	Funabori ES	2-22-22 Funabori	3680-6101
18	Funabori Daini ES	4-14-4 Funabori	3689-5351
19	Kasai ES	2-4-3 Naka-Kasai	3680-9366
20	Ninoe ES	5-18-3 Edogawa	3680-6273
21	Ninoe Daini ES	5-13 Haruecho	3687-8031
22	Daini Kasai ES	6-33-1 Higashi-Kasai	3689-0211
23	Daisan Kasai ES	4-2-19 Kita-Kasai	3680-5111
24	Daiyon Kasai ES	8-8-1 Naka-Kasai	3688-1833
25	Daigo Kasai ES	2-13-33 Kita-Kasai	3689-6216
26	Dairoku Kasai ES	4-5-1 Nishi-Kasai	3688-0485
27	Dainana Kasai ES	7-8-1 Nishi-Kasai	3688-4891
28	Minami-Kasai ES	5-10-1 Minami-Kasai	3675-0315
29	Minami-Kasai Daini ES	7-5-9 Minami-Kasai	3686-1431
30	Minami-Kasai Daisan ES	5-2-1 Minami-Kasai	3878-3357
31	Nishi-Kasai ES	3-9-44 Nishi-Kasai	3686-7640
32	Shinden ES	8-16-1 Nishi-Kasai	3675-4681
33	Ukita ES	5-13-1 Kita-Kasai	3689-1291
34	Seishin Daiichi ES	1-4-19 Seishincho	3878-1271
35	Former Seishin Daini ES	2-10-1 Seishincho	—
36	Seishin Futaba ES	1-1-38 Seishincho	3878-3621
37	Rinkai ES	2-2-11 Rinkaicho	5674-2761
38	Higashi-Kasai ES	8-23-1 Higashi-Kasai	3686-2806
39	Mizue ES	3-39 Nishi-Mizue	3679-0014

No.	Elementary School Name	Address	Phone
40	Harue ES	1-3-30 Mizue	3679-0666
41	Niihori ES	1-32-1 Niihori	3678-6631
42	Shimo-Kamata ES	3-11-1 Higashi-Mizue	3698-2151
43	Shimo-Kamata Higashi ES	2-16-31 Edogawa	3679-8885
44	Edogawa ES	1-1-16 Edogawa	3670-6007
45	Ichinoe ES	4-5-1 Ichinoe	3651-2969
46	Ichinoe Daini ES	4-16 Haruecho	3654-9831
47	Shikamoto ES	2-35-7 Matsumoto	3653-7414
48	Shishibone ES	6-3-5 Shishibone	3670-9475
49	Shishibone Higashi ES	3-7-1 Shishibone	3677-8541
50	Matsumoto ES	6-9-1 Shishibone	3677-4341
51	Hon-Isshiki ES	2-10-1 Hon-Isshiki	3654-6030
52	Shinozaki ES	3-2-18 Shinozaki	3679-1223
53	Shinozaki Daini ES	1-3-1 Kami-Shinozaki	3670-0138
54	Shinozaki Daisan ES	1-1-16 Higashi-Shinozaki	3679-0005
55	Shinozaki Daiyon ES	8-12-8 Shinozaki	3679-1715
56	Shinozaki Daigo ES	2-5-1 Kita-Shinozaki	3677-9541
57	Minami-Shinozaki ES	4-27-5 Minami-Shinozaki	3679-0441
58	Kamata ES	2-45-18 Minami-Shinozaki	3670-1638
59	Koiwa ES	3-20-10 Higashi-Koiwa	3657-1078
60	Higashi-Koiwa ES	4-12-1 Higashi-Koiwa	3657-0974
61	Shimo-Koiwa ES	7-8-1 Minami-Koiwa	3650-1714
62	Kami-Koiwa ES	7-2-1 Kita-Koiwa	3657-1348
63	Kami-Koiwa Daini ES	8-28-11 Kita-Koiwa	3673-0993
64	Nishi-Koiwa ES	3-19-12 Nishi-Koiwa	3657-1530
65	Former Kami-Isshiki ES	2-4-1 Nishi-Koiwa	—
66	Kami-Isshiki Minami ES	3-28-24 Hon-Isshiki	3655-4103
67	Minami-Koiwa ES	4-16-1 Minami-Koiwa	3657-1565
68	Minami-Koiwa Daini ES	2-16-1 Minami-Koiwa	3657-0257
69	Naka-Koiwa ES	3-12-22 Kita-Koiwa	3657-1721
70	Kita-Koiwa ES	2-15-1 Kita-Koiwa	3659-5351

No.	Junior High School Name	Address	Phone
78	Matsue Daiyon JHS	1-16-1 Nishi-Ichinoe	3652-7591
79	Matsue Daigo JHS	6-18-1 Ichinoe	3652-7946
80	Matsue Dairoku JHS	7-16-18 Matsue	3656-6711
81	Ninoe JHS	5-3-1 Haruecho	3686-2281
82	Kasai JHS	2-4-3 Naka-Kasai	3680-3486
83	Kasai Daini JHS	1085 Ukitaicho	3680-5146
84	Kasai Daisan JHS	6-6-13 Naka-Kasai	3687-8021
85	Minami-Kasai JHS	5-12-1 Minami-Kasai	3675-0317
86	Minami-Kasai Daini JHS	5-3-1 Minami-Kasai	3878-3651
87	Nishi-Kasai JHS	5-10-18 Nishi-Kasai	3686-7874
88	Higashi-Kasai JHS	6-40-1 Higashi-Kasai	3675-4761
89	Seishin Daiichi JHS	1-5-14 Seishincho	3878-1281
90	Seishin Daini JHS	2-1-2 Seishincho	3877-6631
91	Mizue JHS	4-16 Edogawa	3651-2210
92	Mizue Daini JHS	4-54-1 Mizue	3670-1301
93	Mizue Daisan JHS	1-38-33 Higashi-Mizue	3678-1495
94	Harue JHS	2-47-1 Haruecho	3678-9241
95	Shikamoto JHS	1-36-1 Matsumoto	3651-0817
96	Shishibone JHS	2-12-1 Shishibone	3678-5166
97	Shinozaki JHS	5-12-19 Shinozaki	3679-3001
98	Shinozaki Daini JHS	14-1 Shimo-Shinozaki	3677-9531
99	Koiwa Daiichi JHS	3-10-8 Higashi-Koiwa	3659-7291
100	Koiwa Daini JHS	1-6-10 Higashi-Koiwa	3657-1916
101	Koiwa Daisan JHS	8-19-1 Kita-Koiwa	3657-1958
102	Koiwa Daiyon JHS	3-9-18 Nishi-Koiwa	3659-9471
103	Koiwa Daigo JHS	5-27-1 Shishibone	3679-6375
104	Kami-Isshiki JHS	1-8-11 Kami-Isshiki	3653-5407

Evacuation facility (High School)

No.	High School Name	Address	Phone
105	Metropolitan Komatsugawa HS	1-27-10 Hirai	3685-1010
106	Metropolitan Edogawa HS	2-38-1 Matsushima	3651-0297
107	Metropolitan Koiwa HS	3-10-1 Hon-Isshiki	3651-2250
108	Metropolitan Kasai Minami HS	1-11-1 Minami-Kasai	3687-4491
109	Metropolitan Shinozaki HS	1-10-1 Higashi-Shinozaki	3678-9331
110	Metropolitan Momijigawa HS	2-1-1 Rinkaicho	3878-3021
111	Metropolitan Kasai Technical HS	7-68-1 Ichinoe	3653-4111
112	Private Kanto Daiichi HS	2-10-11 Matsushima	3653-1541

*Excluding basement floors

List of other evacuation points

Being prepared for remaining in one place

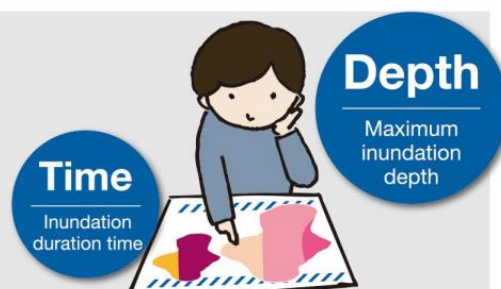
when unable to long-distance evacuate

- If you are unable to evacuate and must remain within the city area, you may have to endure flooded conditions for over 2 weeks at the longest.
- You must prepare enough food, drinking water, and toilet supplies, and be ready to remain isolated for long periods.



1. Confirm what will happen to your home when a flood or high tide flooding occurs by using the hazard map

The hazard map shows the “**depth**” of inundation levels and “**time**” for duration of floods in your home or at workplaces.



2. Imagine if you and your family remain at home and do not long-distance evacuate

In Edogawa City and the 5 cities of Koto...

Most areas will become submerged



Conditions may last for more than 2 weeks at the longest

2.5 million people in the flood

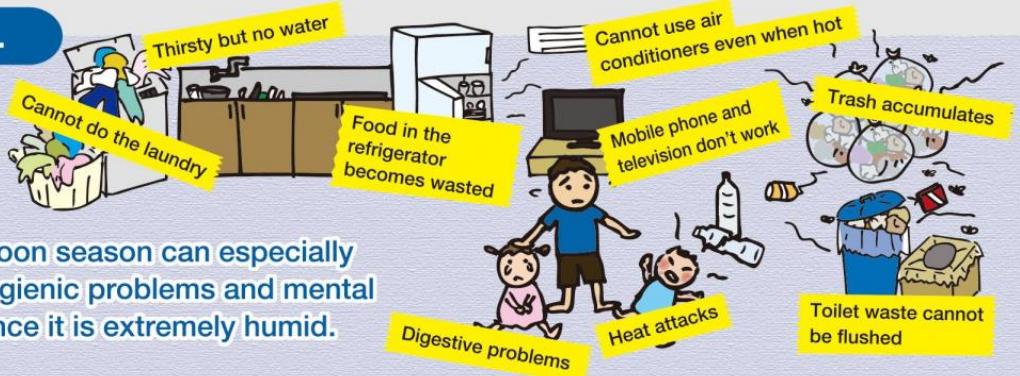
The more people remain in the area, the more time it will take for rescue



According to an estimation by the government, only **20,000/day** can be rescued at most

Isolation

At home...



The typhoon season can especially cause hygienic problems and mental stress since it is extremely humid.

You may have to endure conditions in flood without water, electricity, gas, and unable to use the bathroom for more than 2 weeks until the water withdrawals. You must be mentally prepared and have supplies ready.

First, let's plan for evacuation to areas that are not affected by flood

3. Refer to P. 12 and prepare necessary items for evacuation

If you are still forced to remain...

4. Be sufficiently prepared to endure conditions without lifeline utilities such as water supply, electricity, gas, and toilets for 2 weeks or more

☐ Food (for 2 weeks)

Canned food, boil-in-the-bag meals, nutritional supplement food, snacks, condiments, soups, etc.

Create a routine for being prepared by regularly eating these foods and then restocking them



☐ Drinking water (for 2 weeks)

Prepare enough for around 3 liters a day for 1 adult

☐ Toilet supplies (for 2 weeks)

Portable toilet, waste storage container, toilet bag, toilet paper

☐ Fuel (for 2 weeks)

Portable stove, gas cylinder, solid fuel

☐ Food wrap

☐ Sleeping gear, sleeping bag

☐ Toiletries

Other items that should be prepared for each apartment (keep stored on floors that won't become submerged)

Prepare items that can be used by the residents of the apartment or housing complex.

☐ Necessary items for life-saving and rescue

☐ Inflatable boat

☐ Rope

☐ AED

☐ Stretcher

☐ Necessary items for remaining in homes

☐ Lantern

☐ Power generator

☐ Fuel for power generator

☐ Cord reel

☐ Floodlight

☐ Tent

The importance of communities

- Cooperating with everyone in the community makes a huge difference in emergencies.



Protect your own life

In order to prevent lives from being lost due to disasters, it is important for each individual to remember that “ultimately you must save yourself in emergencies”. We must remember to be self-reliant and prepared for disasters. Believing wishfully that you will be safe or relying on others is dangerous.

A family's lives can be protected by the family

If you can protect your own life, you can save your family. Confirming with each other in the family how to act in case of emergencies and making sure to be ready will also lead to protecting the family.

A community can be protected by the people who live there

If the residents of a community are able to save themselves and their families independently, people could be able to deal with situations that would be difficult to overcome individually.



Make decisions together, evacuate together

Individuals may hesitate to evacuate even if information regarding evacuation is announced. It becomes easier to decide evacuations if everyone in the community thinks of an evacuation plan together.

From beforehand...

Choose evacuation points and when to evacuate with everyone



Know

which individuals need help to evacuate

It is important for everyone to cooperate

Actively taking part in town and local assemblies will help to develop a cooperative relationship between neighbors and people of the community.



When the time comes...

Evacuate with everyone!



For example...

Notify neighbors beforehand and evacuate



Preparing an evacuation plan for facilities for people in need of special care

Facilities for people in need of special care such as medical treatment facilities, social welfare facilities, and schools should create a plan and carry out evacuation drills for people who use these facilities to ensure their safety when flood disasters occur.

On June 19, 2017, a law for revising a section of the Flood Control Act was implemented, and managers of facilities for people in need of special care are obligated to create evacuation plans and carry out evacuation drills.



Be prepared for flood disasters by planning for evacuation and regularly carrying out drills

Areas are affected differently by flood disasters

- Most areas of Edogawa City will probably become submerged if a high tide flooding occurs.
- There is a risk of flooding even if the Arakawa and Edogawa rivers overflow, as well as if the Nakagawa and Tonegawa rivers overflow. However, it is not possible to predict which river will overflow, as this will depend on the rainfall and where it will rain.
- When there is localized torrential rainfall within the city, rainwater may not be drained sufficiently and it may accumulate within the city area.

The area east of Shin-Nakagawa River is

When a **High Tide Flooding** occurs

P.21-22

In the event of **Arakawa River** flooding

P.23-24

In the event of **Edogawa River** flooding

P.25-26

In the event of **Tonegawa River** flooding

P.27-28

In the event of **Nakagawa River** flooding

Government controlled section P.29-30

In the event of flooding from small and medium-sized river flooding such as **Nakagawa River/Shin-Nakagawa River**

Metropolitan controlled section

and **Inland Flooding** P.31-33

Areas that may become submerged

The area west of Shin-Nakagawa River is

When a **High Tide Flooding** occurs

P.21-22

In the event of **Arakawa River** flooding

P.23-24

In the event of flooding from small and medium-sized river flooding such as **Nakagawa River/Shin-Nakagawa River**

Metropolitan controlled section

and **Inland Flooding** P.31-33

Areas that may become submerged

*Flooding from small and medium-size rivers in the area west of Arakawa River is assumed not to occur, so only inundation caused by inland flooding is shown.



Why's of expected inundation

Why?

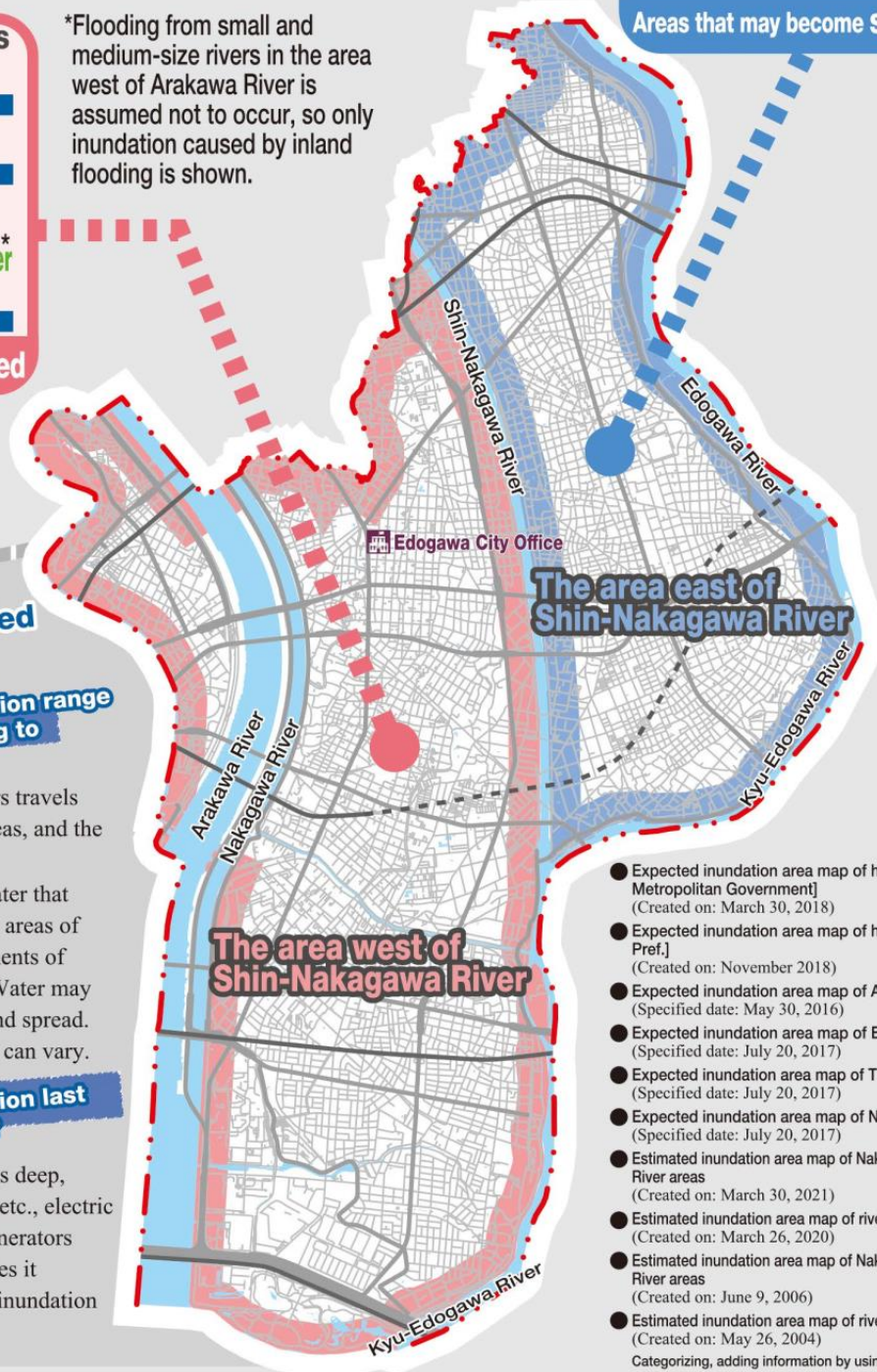
Why is the inundation range different according to rivers?

- Water that overflows from rivers travels from elevated areas to lower areas, and the inundation range spreads.
- Depending on the amount of water that overflows, the flow may stop in areas of certain topography or embankments of small and medium size rivers. Water may also rise above embankments and spread. Therefore, the inundation range can vary.

Why?

Why does inundation last for over 2 weeks?

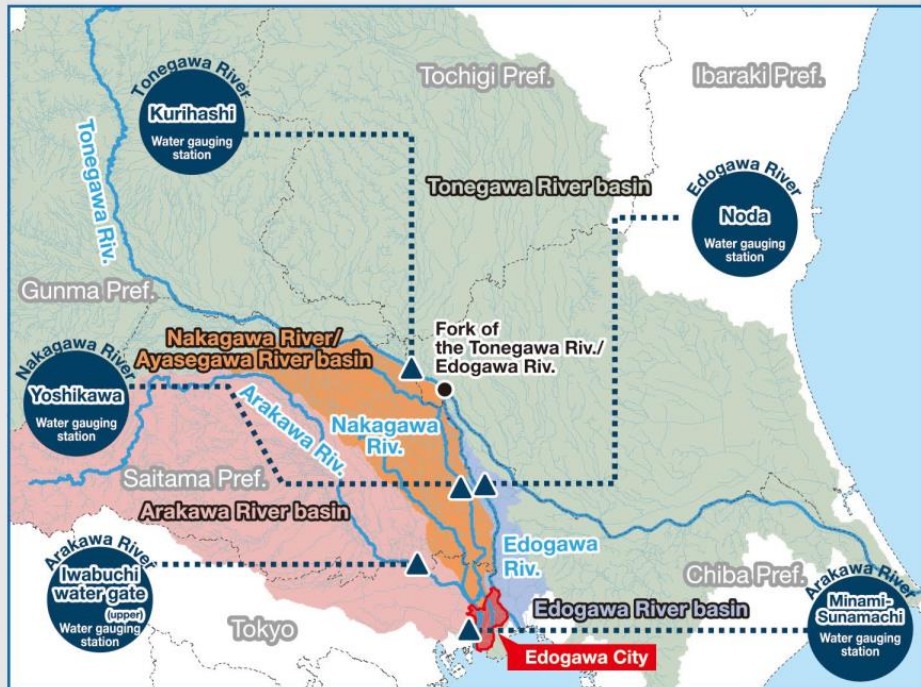
- When inundation depth becomes deep, drainage pumps or water gates, etc., electric equipment for private power generators become submerged, which makes it impossible to drain. Therefore, inundation can last for long periods.



- Expected inundation area map of high tide flooding [Tokyo Metropolitan Government] (Created on: March 30, 2018)
- Expected inundation area map of high tide flooding [Chiba Pref.] (Created on: November 2018)
- Expected inundation area map of Arakawa River flooding (Specified date: May 30, 2016)
- Expected inundation area map of Edogawa River flooding (Specified date: July 20, 2017)
- Expected inundation area map of Tonegawa River flooding (Specified date: July 20, 2017)
- Expected inundation area map of Nakagawa River flooding (Specified date: July 20, 2017)
- Estimated inundation area map of Nakagawa River/Ayasegawa River areas (Created on: March 30, 2021)
- Estimated inundation area map of river basins within Koto area (Created on: March 26, 2020)
- Estimated inundation area map of Nakagawa River/Ayasegawa River areas (Created on: June 9, 2006)
- Estimated inundation area map of river basins within Koto area (Created on: May 26, 2004)

Categorizing, adding information by using the above as reference.

Providing indications for evacuation Water gauging stations of rivers



Information notifying evacuation when there is a high risk of river flooding

- An evacuation Instruction will be announced when water levels of rivers rise, and there is a risk of river flooding.

Water level
of rivers
is rising

Evacuation of the Elderly, Etc.

- People in need of special care and seniors begin evacuation
- Begin preparing for immediate evacuation

There is
a risk
of river
flooding

Evacuation Instruction

- Begin evacuation to local disaster prevention bases or evacuation facilities (elementary/junior high schools, etc.)

River
flooding
can occur
at any
moment

Emergency Safety Measures

- Evacuate to rooms in the house above inundation levels or nearby high-rise buildings

River flooding
occurs

How to check torrential rain/water level information

How to
check
information
is also
mentioned on
P. 10

Japan Meteorological Agency (JMA)

<https://www.jma.go.jp>

JMA homepage

- ▶ Disaster prevention information
 - ▶ Weather warning/advisory
 - ▶ Typhoon information
 - ▶ Real-time Risk Map (Landslide/Inundation/Flood)

Edogawa City weather information system

<http://edogawa.tenki.ne.jp>

MLIT Disaster prevention information of rivers

<https://www.river.go.jp>

How to check evacuation information

Edogawa City Disaster Prevention App

Disaster prevention apps provide real-time information on disaster prevention, such as information on the damage overview and the available evacuation centers in the city.

Please search for "Edogawa City Disaster Prevention" in the app store or use the two-dimensional code at the right.



Edogawa City LINE official account

- Read the two-dimensional code at the right of the screen and add "friend"
- LINE ID @edogawa_city



Edogawa City official Twitter

https://twitter.com/edogawa_city

- Account name @edogawa_city
- Hashtag #江戸川区



Edogawa Mail News Advanced registration required

Evacuation information and evacuation site information of Edogawa City are sent by email to registered mobile phones and computers.

How to register: t-edogawa@sg-p.jp

Send an email to the email address without subject and text (The email address can also be scanned with the two-dimensional code on the right)



Area Mail/Emergency notification email

Emergency information will be sent to mobile phones accepting emergency notification emails.

*Contact mobile phone companies for details.

Check on television

Digital terrestrial broadcasting **NHK G d button**
Cable television **J:COM Channel emergency broadcasting**

Information can be viewed if residences (including apartments) have access to J:COM Edogawa's cable television channels.

Check on radio

AM **NHK Radio 1 594 kHz**
FM **FM Edogawa 84.3 MHz**

Areas are affected differently
by flood disasters

When a **High Tide Flooding** occurs

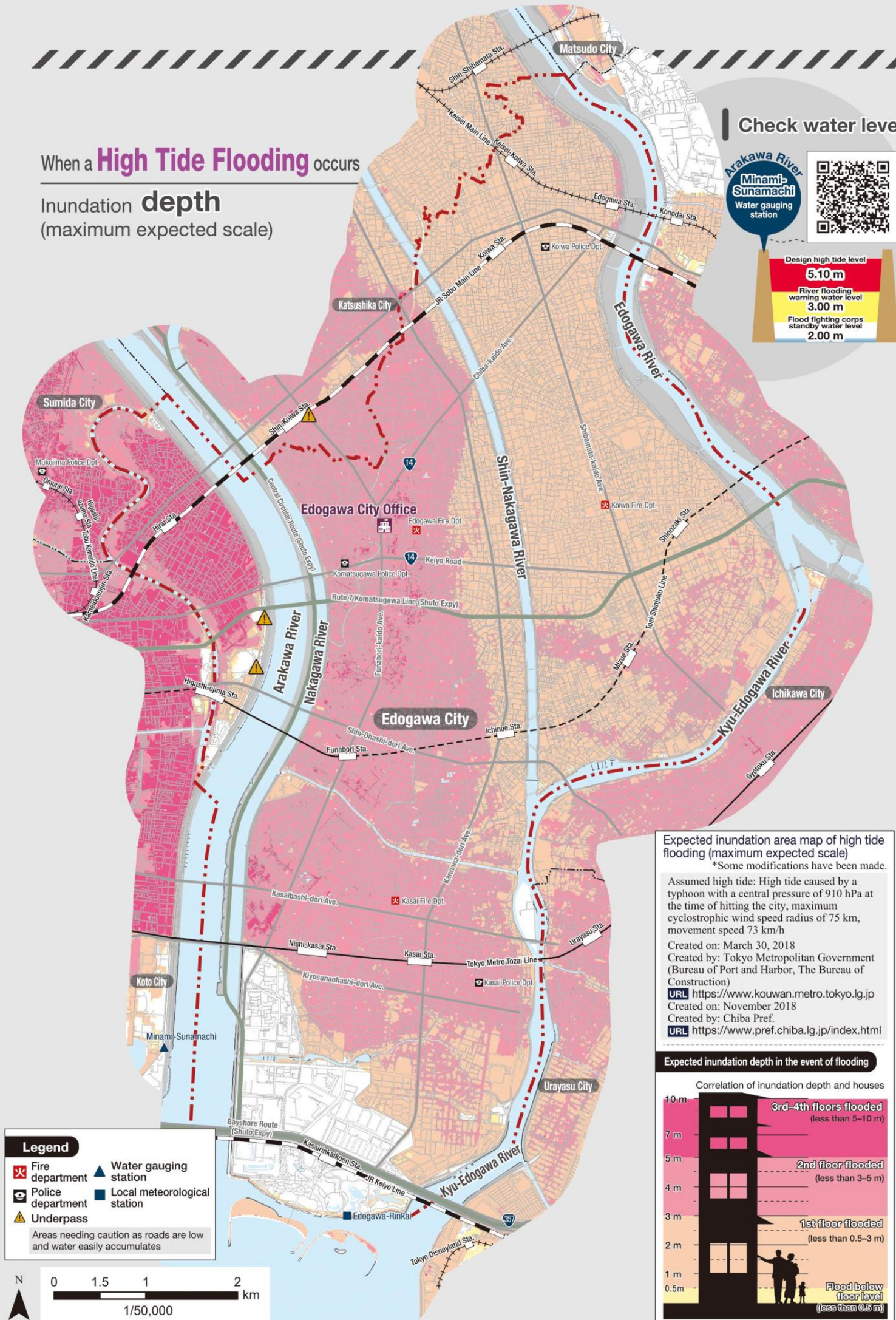
Inundation **depth**
(maximum expected scale)

Check water level

Arakawa River
Minami-Sunamachi
Water gauging station



Design high tide level
5.10 m
River flooding warning water level
3.00 m
Flood fighting corps standby water level
2.00 m



Expected inundation area map of high tide flooding (maximum expected scale)

*Some modifications have been made.

Assumed high tide: High tide caused by a typhoon with a central pressure of 910 hPa at the time of hitting the city, maximum cyclostrophic wind speed radius of 75 km, movement speed 73 km/h

Created on: March 30, 2018

Created by: Tokyo Metropolitan Government (Bureau of Port and Harbor, The Bureau of Construction)

URL <https://www.kouwan.metro.tokyo.lg.jp>

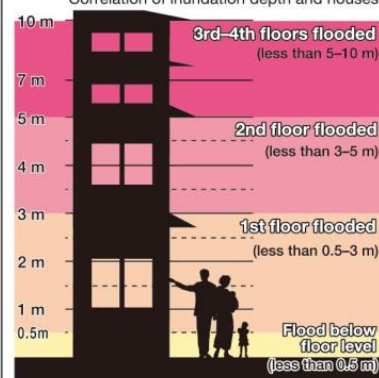
Created on: November 2018

Created by: Chiba Pref.

URL <https://www.pref.chiba.lg.jp/index.html>

Expected inundation depth in the event of flooding

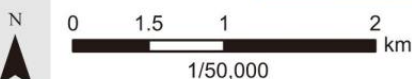
Correlation of inundation depth and houses



Legend

- Fire department
- Police department
- Underpass
- Water gauging station
- Local meteorological station

Areas needing caution as roads are low and water easily accumulates



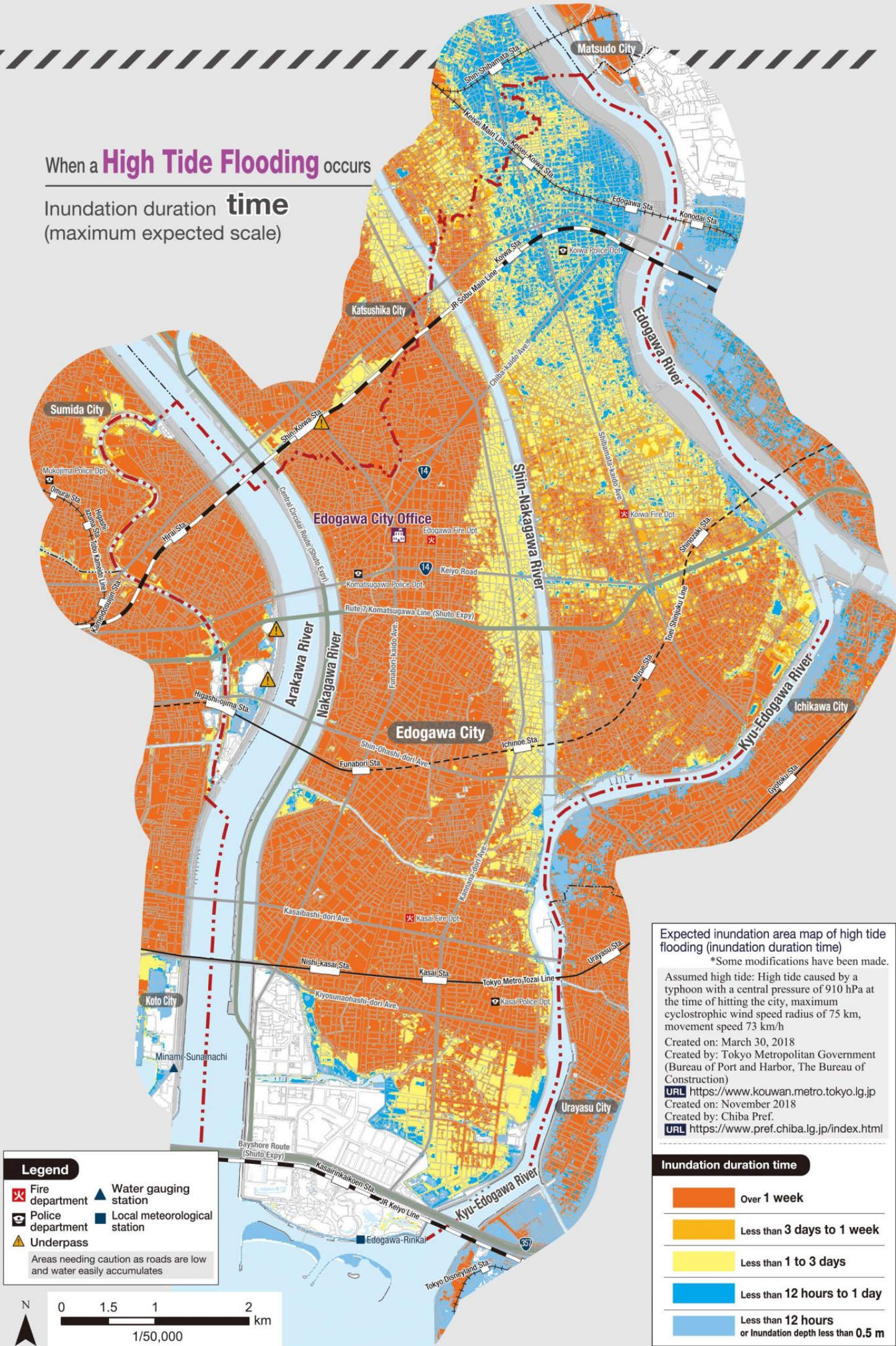
1/50,000

When a **High Tide Flooding** occurs

Inundation duration **time**
(maximum expected scale)

The area west of
Shin-Nakagawa River may be flooded

The area east of
Shin-Nakagawa River may be flooded



When a high tide flooding occurs

In the event of Arakawa River flooding

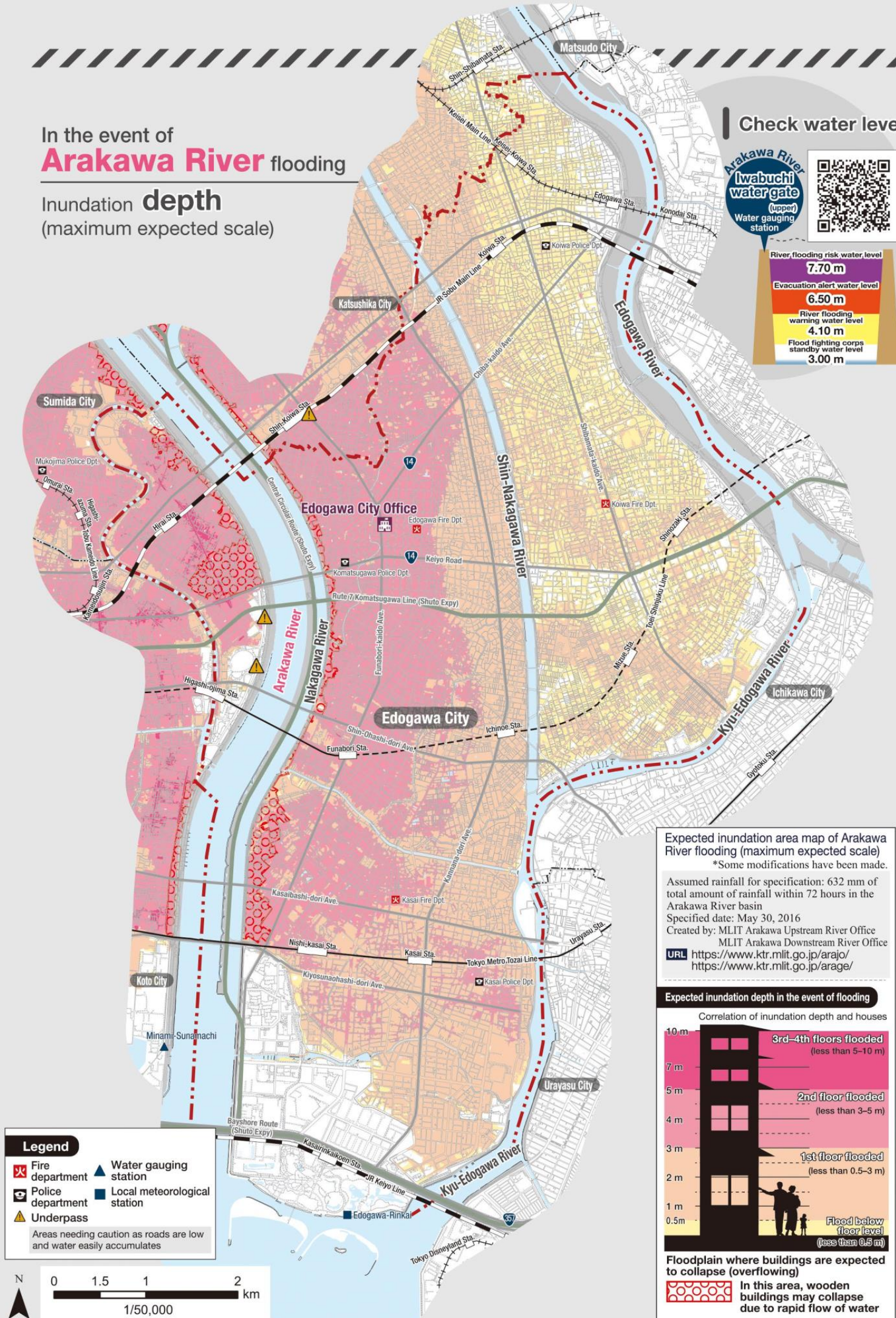
Inundation **depth**
(maximum expected scale)

Check water level

Arakawa River
Iwabuchi water gate
(upper)
Water gauging station



River flooding risk water level	7.70 m
Evacuation alert water level	6.50 m
River flooding warning water level	4.10 m
Flood fighting corps standby water level	3.00 m



Expected inundation area map of Arakawa River flooding (maximum expected scale)

*Some modifications have been made.

Assumed rainfall for specification: 632 mm of total amount of rainfall within 72 hours in the Arakawa River basin

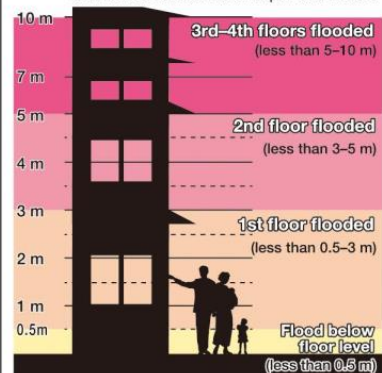
Specified date: May 30, 2016

Created by: MLIT Arakawa Upstream River Office
MLIT Arakawa Downstream River Office

URL <https://www.ktr.mlit.go.jp/arajo/>
<https://www.ktr.mlit.go.jp/arage/>

Expected inundation depth in the event of flooding

Correlation of inundation depth and houses

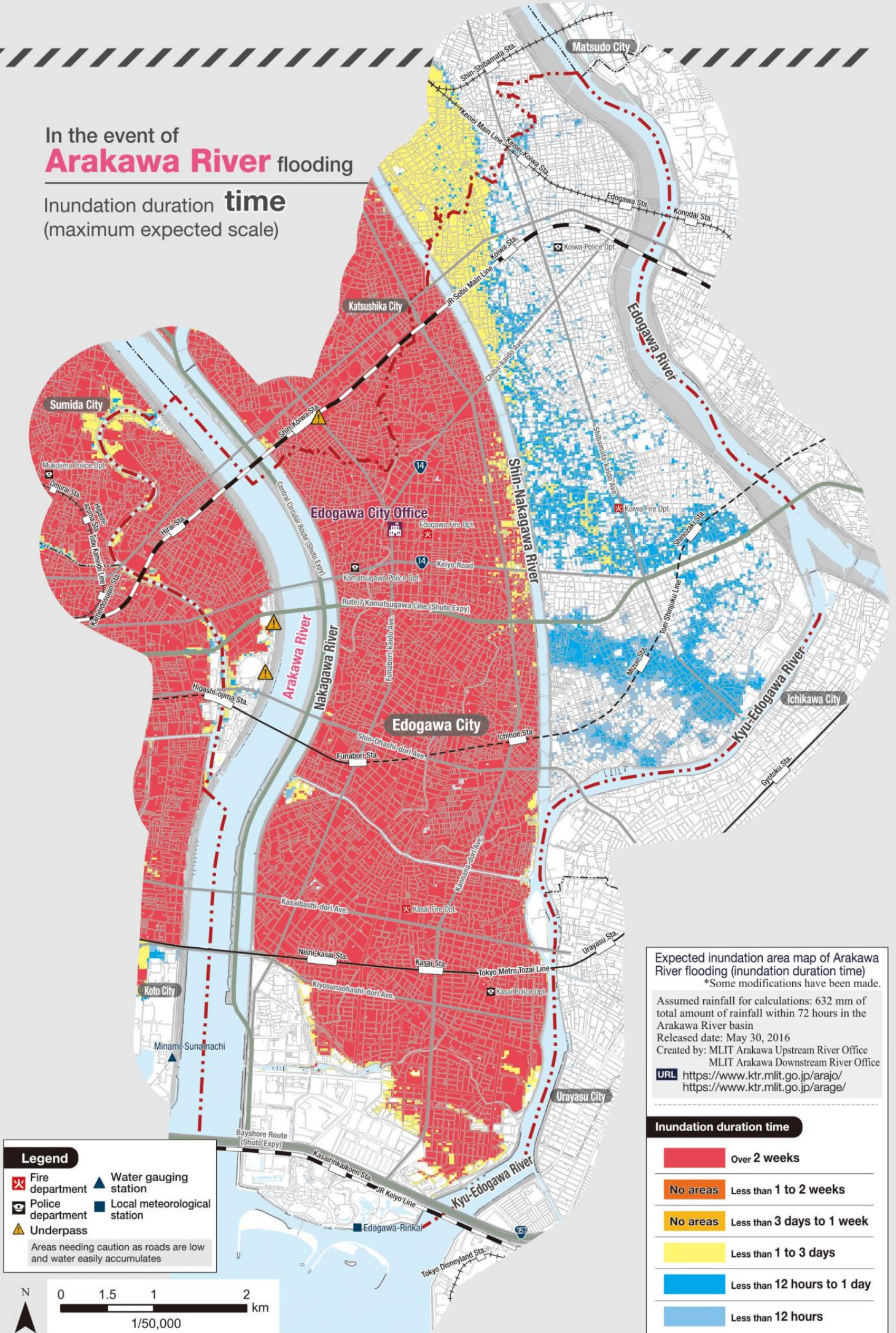


Floodplain where buildings are expected to collapse (overflowing)

In this area, wooden buildings may collapse due to rapid flow of water

In the event of Arakawa River flooding

Inundation duration **time**
(maximum expected scale)



The area west of
Shin-Nakagawa River may be flooded

The area east of
Shin-Nakagawa River may be flooded

In the event of
Arakawa River flooding

In the event of Edogawa River flooding

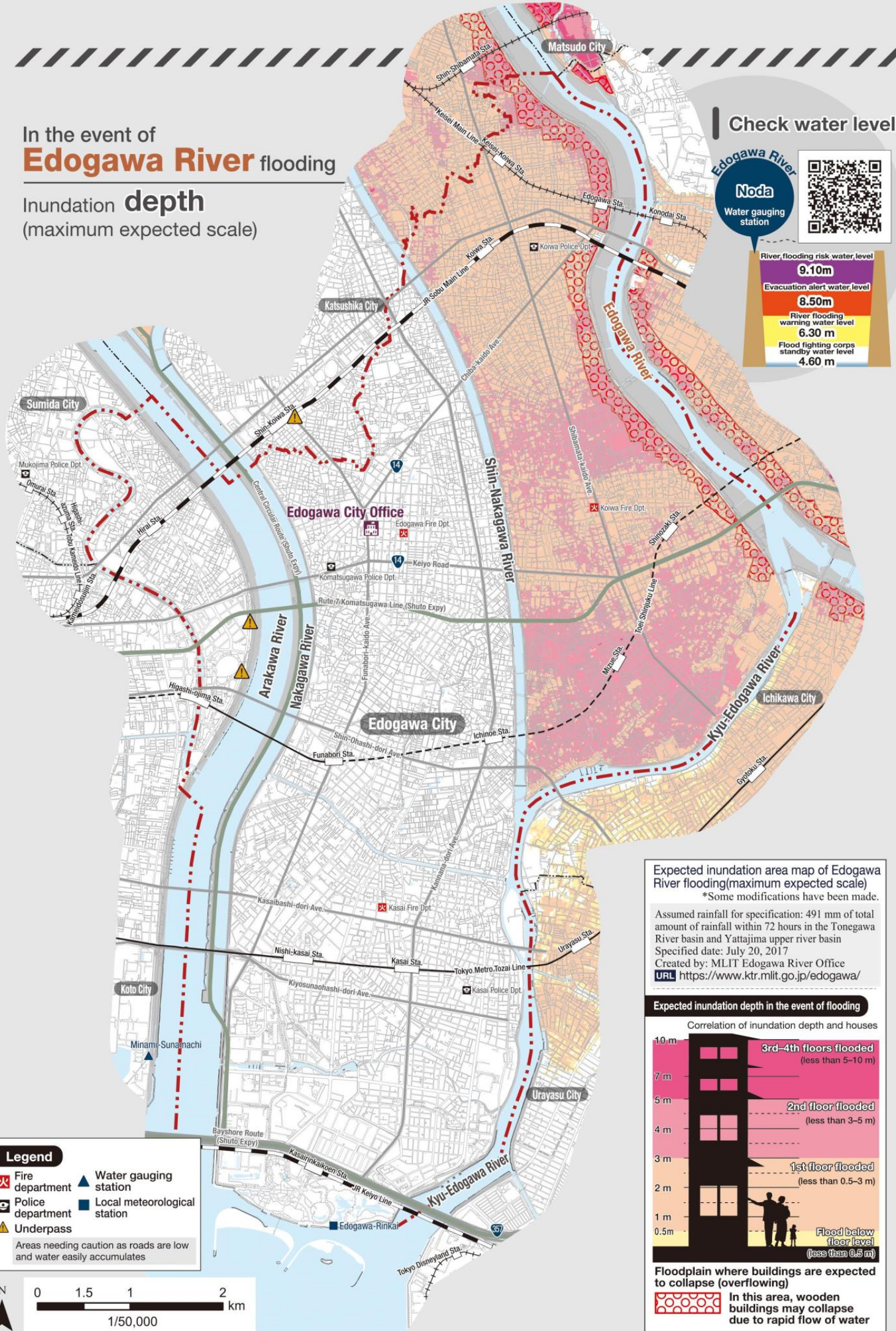
Inundation **depth**
(maximum expected scale)

Check water level

Edogawa River
Noda
Water gauging station



River flooding risk water level	9.10m
Evacuation alert water level	8.50m
River flooding warning water level	6.30 m
Flood fighting corps standby water level	4.60 m

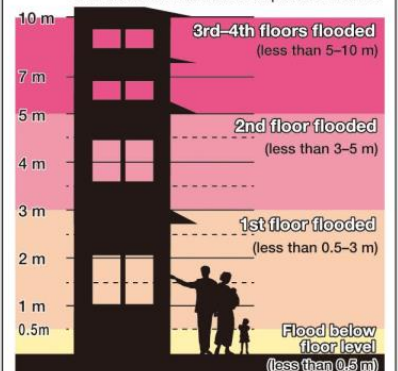


Expected inundation area map of Edogawa River flooding(maximum expected scale)
*Some modifications have been made.

Assumed rainfall for specification: 491 mm of total amount of rainfall within 72 hours in the Tonegawa River basin and Yattajima upper river basin
Specified date: July 20, 2017
Created by: MLIT Edogawa River Office
URL <https://www.ktr.mlit.go.jp/edogawa/>

Expected inundation depth in the event of flooding

Correlation of inundation depth and houses



Floodplain where buildings are expected to collapse (overflowing)

In this area, wooden buildings may collapse due to rapid flow of water

Legend

- Fire department
- Police department
- Underpass
- Water gauging station
- Local meteorological station

Areas needing caution as roads are low and water easily accumulates

In the event of Edogawa River flooding

Inundation duration **time**
(maximum expected scale)



The area east of
Shin-Nakagawa River may be flooded

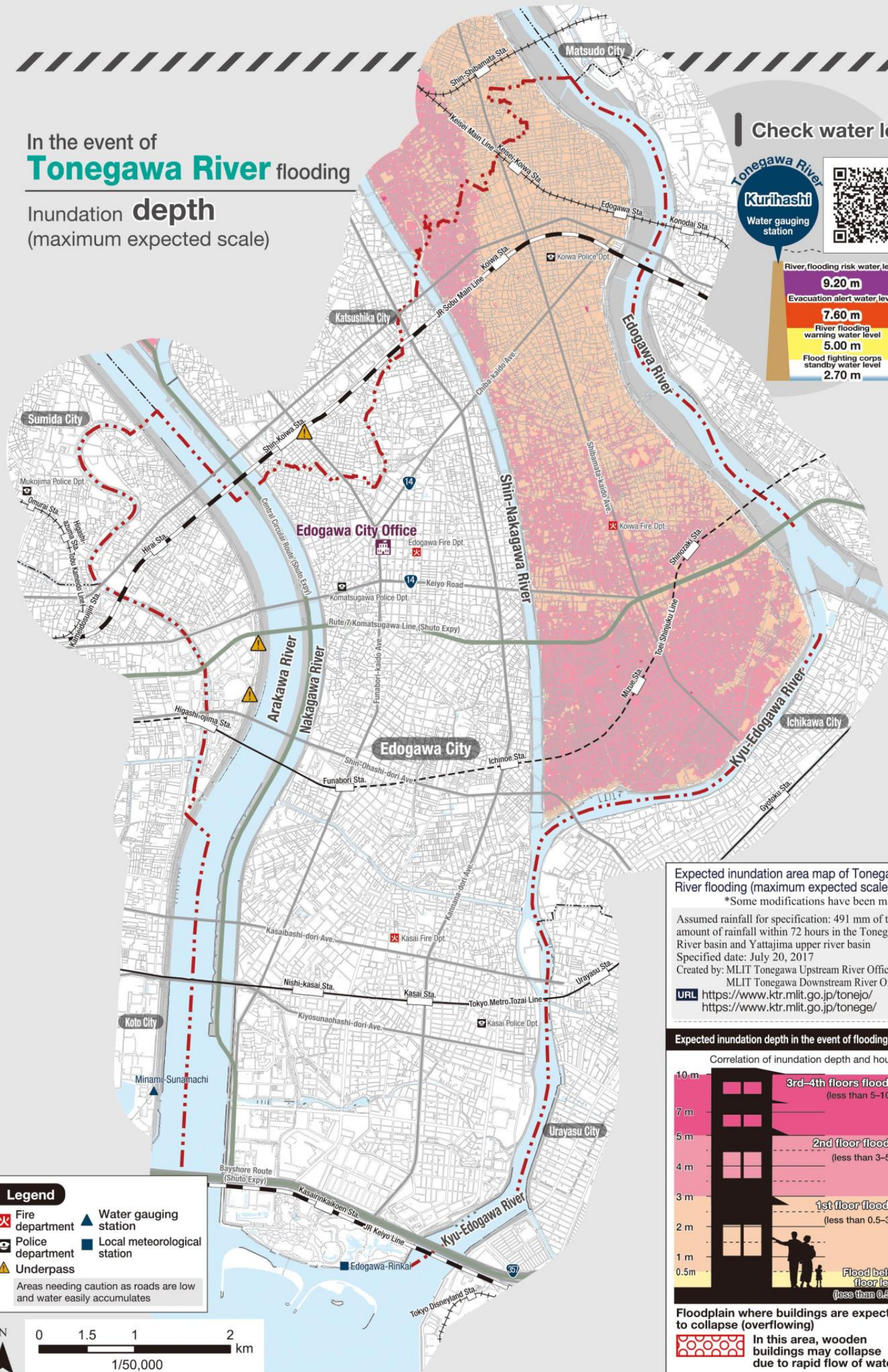
In the event of
Edogawa River flooding

In the event of Tonegawa River flooding

Inundation **depth**
(maximum expected scale)

Check water level

Tonegawa River
Kurihashi
Water gauging station



Expected inundation area map of Tonegawa River flooding (maximum expected scale)

*Some modifications have been made.

Assumed rainfall for specification: 491 mm of total amount of rainfall within 72 hours in the Tonegawa River basin and Yattajima upper river basin

Specified date: July 20, 2017

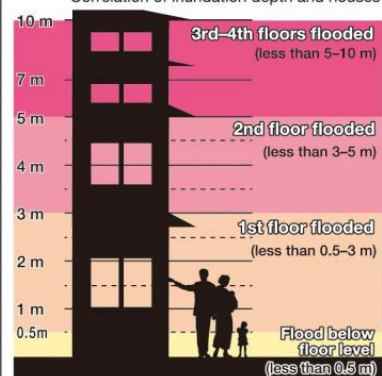
Created by: MLIT Tonegawa Upstream River Office

MLIT Tonegawa Downstream River Office

URL <https://www.ktr.mlit.go.jp/tonejo/>
<https://www.ktr.mlit.go.jp/tonege/>

Expected inundation depth in the event of flooding

Correlation of inundation depth and houses



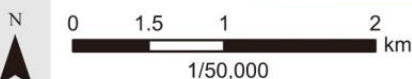
Floodplain where buildings are expected to collapse (overflowing)

In this area, wooden buildings may collapse due to rapid flow of water

Legend

- Fire department
- Water gauging station
- Police department
- Local meteorological station
- Underpass

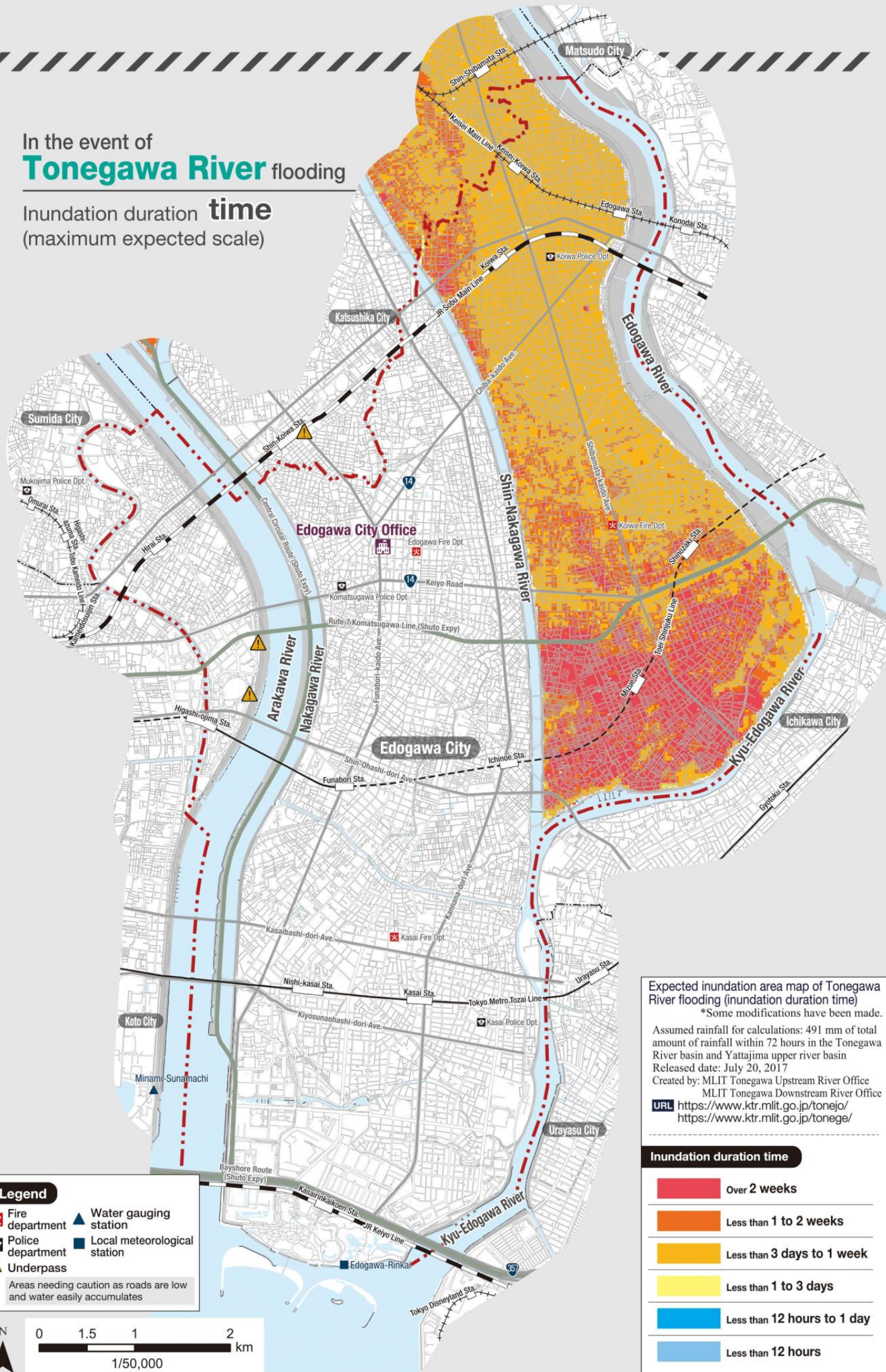
Areas needing caution as roads are low and water easily accumulates



1/50,000

In the event of Tonegawa River flooding

Inundation duration **time**
(maximum expected scale)



The area east of
Shin-Nakagawa River may be flooded

Expected inundation area map of Tonegawa River flooding (inundation duration time)

*Some modifications have been made.

Assumed rainfall for calculations: 491 mm of total amount of rainfall within 72 hours in the Tonegawa River basin and Yattajima upper river basin

Released date: July 20, 2017

Created by: MLIT Tonegawa Upstream River Office
MLIT Tonegawa Downstream River Office

URL <https://www.ktr.mlit.go.jp/tonejo/>
<https://www.ktr.mlit.go.jp/tonege/>

Inundation duration time

	Over 2 weeks
	Less than 1 to 2 weeks
	Less than 3 days to 1 week
	Less than 1 to 3 days
	Less than 12 hours to 1 day
	Less than 12 hours

In the event of
Tonegawa River flooding

In the event of Nakagawa River flooding

Government controlled section

Inundation **depth**
(maximum expected scale)

Check water level

Nakagawa River
Yoshikawa
Water gauging station



River flooding risk water level	4.10 m
Evacuation alert water level	3.70 m
River flooding warning water level	3.60 m
Flood fighting corps standby water level	3.30 m



*Flood damage is not expected south of this point.

Legend

- Fire department
- Police department
- Underpass

Areas needing caution as roads are low and water easily accumulates

Expected inundation area map of Nakagawa River flooding(maximum expected scale)

*Some modifications have been made.

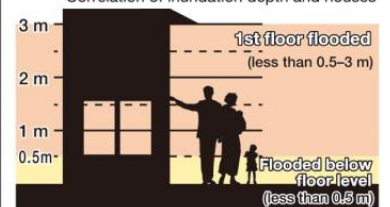
Assumed rainfall for specification: 596 mm of total amount of rainfall within 48 hours in the Nakagawa and Ayasegawa river basin
Specified date: July 20, 2017

Created by: MLIT Edogawa River Office

URL: <https://www.ktr.mlit.go.jp/edogawa/>

Expected water depth in the case of inundation

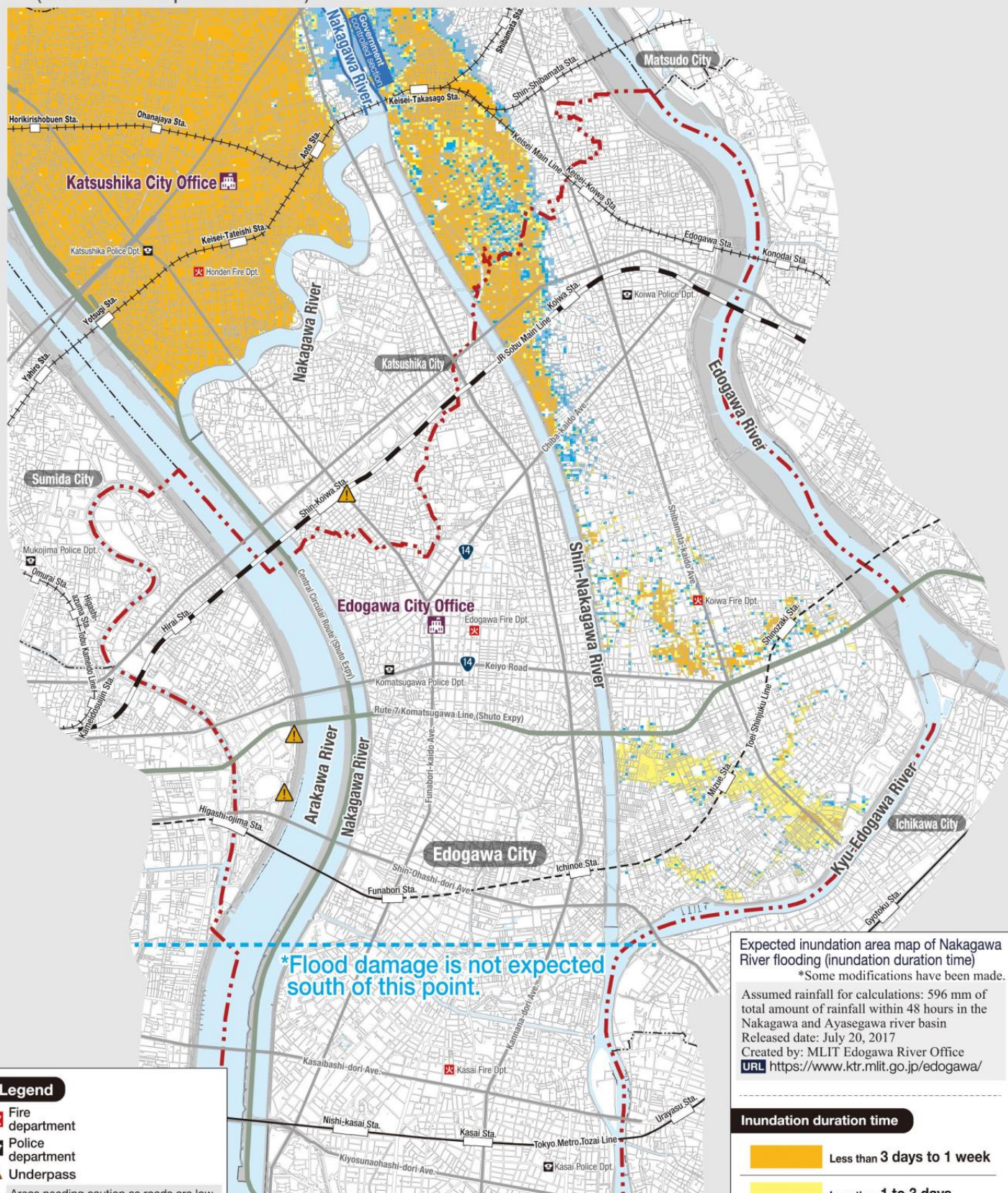
Correlation of inundation depth and houses



In the event of Nakagawa River flooding

Government controlled section

Inundation duration **time**
(maximum expected scale)



The area east of Shin-Nakagawa River may be flooded

In the event of Nakagawa River (Government) flooding

In the event of flooding from
small and medium-sized river flooding such as
Nakagawa River/Shin-Nakagawa River
Metropolitan controlled section and **Inland Flooding**

Inundation **depth**
(maximum expected scale)

**The area west of
Arakawa River** is

Flooding from small and
medium-size rivers is assumed not
to occur, so only inundation caused
by inland flooding is shown.

**Area map of expected inundation
of inland and river water**

This estimated inundation area map was made by
combining the results of the estimated inundation
area map of Nakagawa River/Ayasegawa River
areas, and the estimated inundation area map of
river basins within Koto area.

*Some modifications have been made.

**Estimated inundation area map of
Nakagawa River/Ayasegawa River areas**
Created on: March 30, 2021

**Estimated inundation area map of river
basins within Koto area**
Created on: March 26, 2020

Type of rainfall: Expected maximum rainfall
(Total amount of rainfall 690 mm, maximum
amount of 153 mm/h)

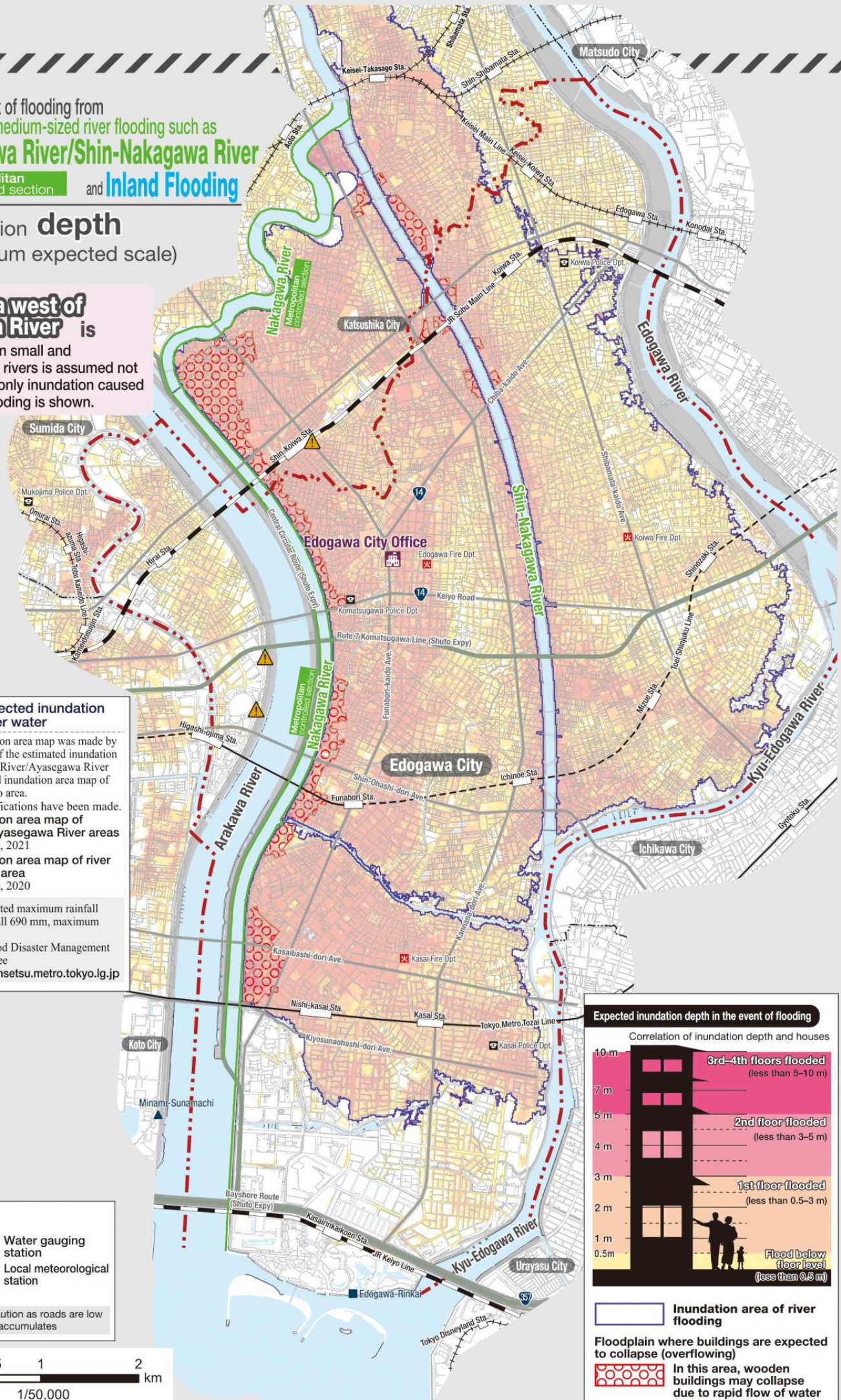
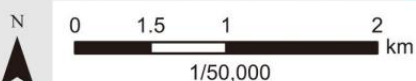
Created by: Urban Flood Disaster Management
Coordinating Committee

URL <https://www.kensetsu.metro.tokyo.lg.jp>

Legend

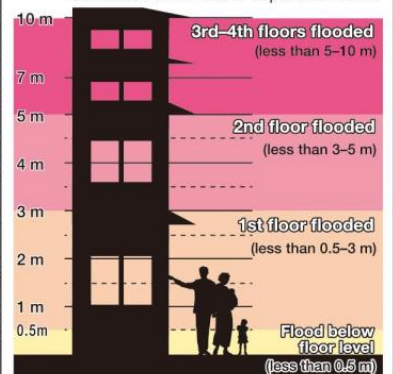
- Fire department
- Police department
- Underpass
- Water gauging station
- Local meteorological station

Areas needing caution as roads are low
and water easily accumulates



Expected inundation depth in the event of flooding

Correlation of inundation depth and houses



Inundation area of river
flooding

Floodplain where buildings are expected to
collapse (overflowing)

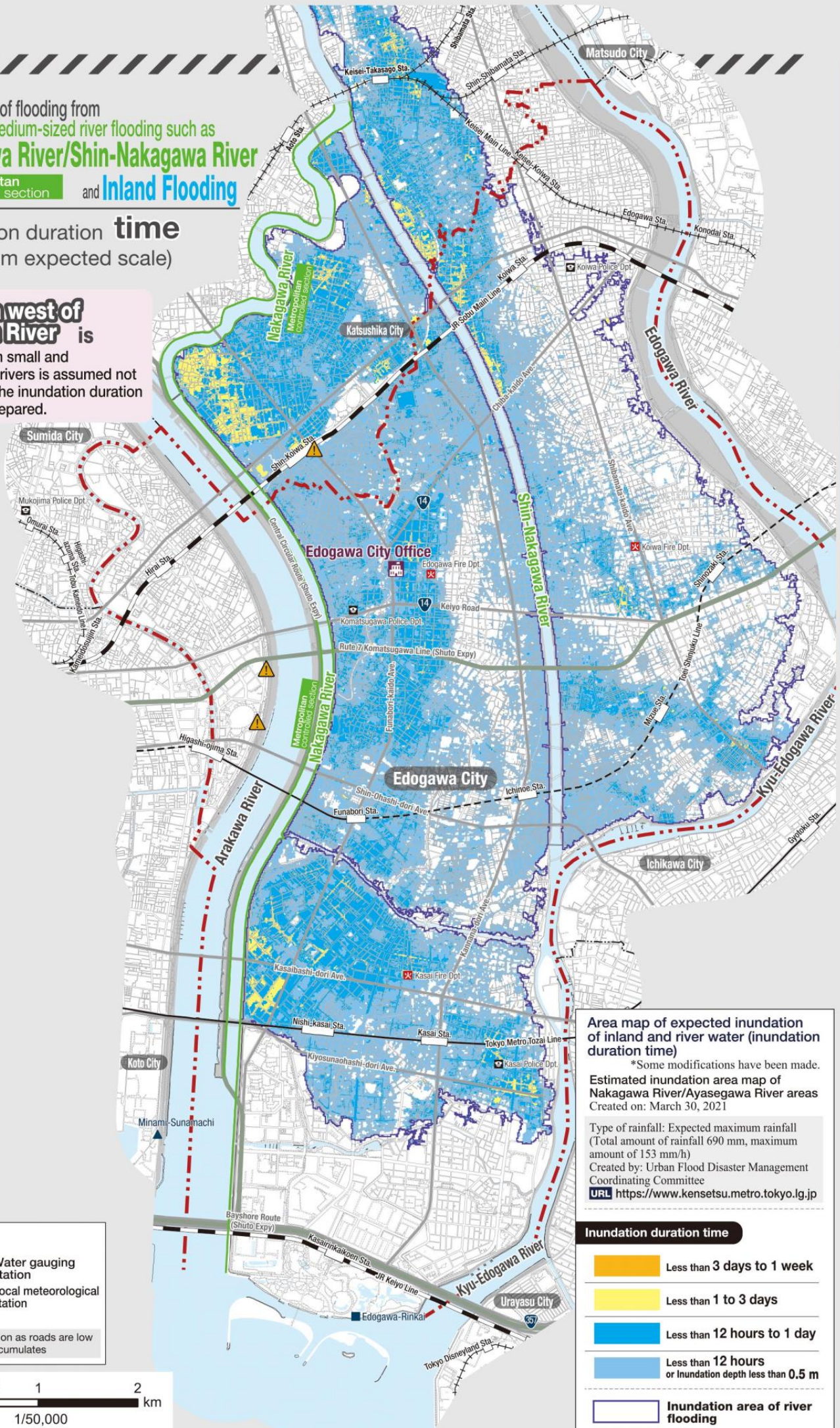
In this area, wooden
buildings may collapse
due to rapid flow of water

In the event of flooding from
small and medium-sized river flooding such as
Nakagawa River/Shin-Nakagawa River
Metropolitan controlled section and **Inland Flooding**

Inundation duration **time**
(maximum expected scale)

**The area west of
Arakawa River** is

Flooding from small and
medium-size rivers is assumed not
to occur, so the inundation duration
map is not prepared.



**Area map of expected inundation
of inland and river water (inundation
duration time)**

*Some modifications have been made.

Estimated inundation area map of
Nakagawa River/Ayasegawa River areas
Created on: March 30, 2021

Type of rainfall: Expected maximum rainfall
(Total amount of rainfall 690 mm, maximum
amount of 153 mm/h)
Created by: Urban Flood Disaster Management
Coordinating Committee
URL <https://www.kensetsu.metro.tokyo.lg.jp>

Inundation duration time

- Less than 3 days to 1 week
- Less than 1 to 3 days
- Less than 12 hours to 1 day
- Less than 12 hours
or inundation depth less than 0.5 m
- Inundation area of river
flooding

The area west of
Shin-Nakagawa River may be flooded

The area east of
Shin-Nakagawa River may be flooded

In the event of flooding from small and medium-sized river flooding such as
Nakagawa River/Metropolitan/Shin-Nakagawa River and Inland Flooding

In the event of Inland Flooding

Inundation depth

Check risk levels of an hour ahead

Hazard distribution of torrential rain warning (flood damage)



Check where risk levels are increasing in the city when a torrential rain warning (flood damage) has been announced.



Underpass

Avoid these locations when there is torrential rain

Sandbag station



Details mentioned on P.35

Sandbags are available for anyone to take for free.

Legend

- Fire department
- Police department
- Underpass
- Water gauging station
- Local meteorological station
- Areas needing caution as roads are low and water easily accumulates
- Sandbag Station (as of January 2023)



Estimated inundation area map of inland flooding

This estimated inundation area map was made by combining the results of the estimated inundation area map of Nakagawa River/Ayasegawa River areas, and the estimated inundation area map of river basins within Koto area.

*Some modifications have been made.

Estimated inundation area map of Nakagawa River/Ayasegawa River areas
Created on: June 9, 2006

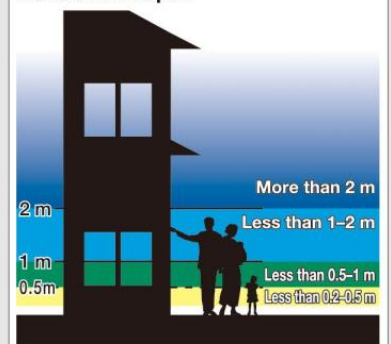
Estimated inundation area map of river basins within Koto area
Created on: May 26, 2004

Type of rainfall: Tokai Torrential Rain Disaster in September 2000 (Total amount of rainfall 589 mm, maximum amount of 114 mm/h)

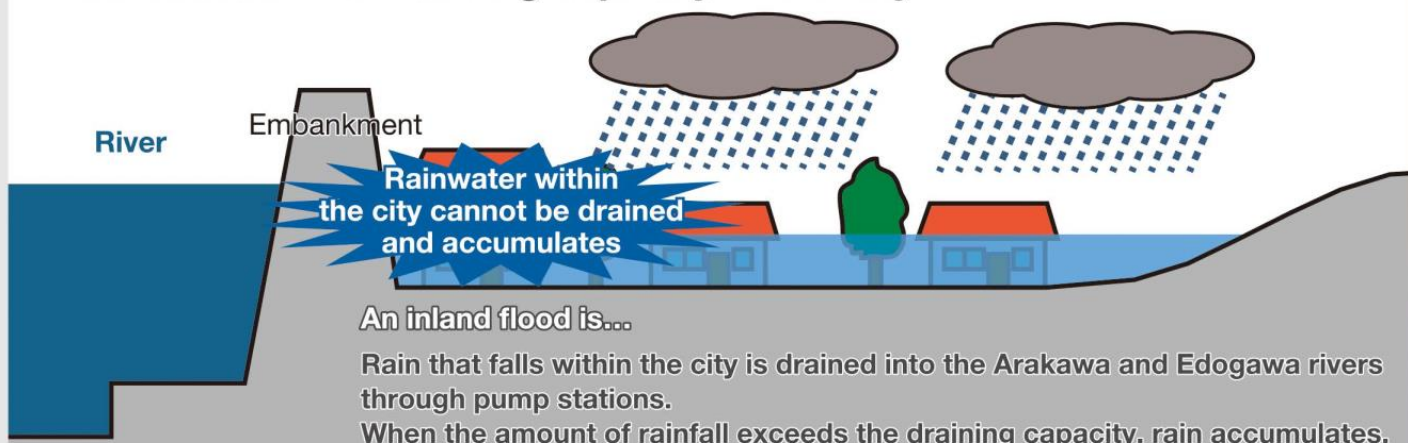
Created by: Urban Flood Disaster Management Coordinating Committee

URL <https://www.kensetsu.metro.tokyo.lg.jp>

Inundation depth



There is a risk of inundation when there is rainfall that exceeds the draining capacity of the city



The area west of Shin-Nakagawa River may be flooded

The area east of Shin-Nakagawa River may be flooded

Going outside when there is torrential rain or inundation is dangerous

When there is a high risk of inundation, do not go out and remain indoors.



Make sure you are in safe conditions

Doors may not be able to open due to water pressure. Keep the doors in basements or rooms in low areas open.



Do not go near rivers under any circumstances

There are many accidents with people who go near rivers when there is torrential rain. Even if you become worried about the constant rainfall, do not go near rivers.



Reduce inundation of the house and damages to the household goods

Prepare for prevention of flooding in the house should you be forced to remain at home. Household goods that become submerged in water will instantaneously become trash; therefore the city becomes filled with flood trash after the disaster passes. Try to reduce the impact of household goods damage as much as possible.

Details are mentioned on
P.35

Caution when you must walk in the water

Long boots and bare feet are dangerous. Wear sneakers that can be tightly worn.



Use long sticks to support yourself and pay attention to obstacles in the water.



Utility holes are dangerous when walking in deep waters, as you may get sucked in without noticing.




In the event of Inland Flooding

Prevent flooding in the house

Flood prevention with sandbags



Sandbag station

“ Sandbag stations” are available in locations within the city, allowing anyone to freely take sandbags in order to prevent damage caused by torrential rain flooding.

Please take sandbags from these stations if necessary.

Edogawa City official homepage
(sandbag station)



https://www.city.edogawa.tokyo.jp/e065/bosaianzen/bosai/jijo/n_donoustation.html



■ Regular household materials can be used to devise simple inundation prevention structures.

This is effective for staircases when inundation depth is shallow. Apart from entrances and exits, prevention of below floor level inundation is also important.

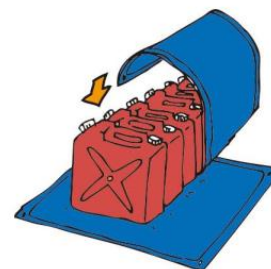
Simple inundation prevention using trash bags

Prepare double-layered, 40-L trash bag, fill it half way up with water and tightly close it. Place them in a cardboard box and put several boxes together.



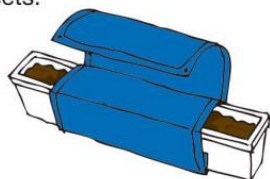
Plastic containers and groundsheets

Fill up 10-L or 20-L plastic containers with water, place them side by side and wrap them up with groundsheets.



Planters and groundsheets

Use planters that are filled with dirt by wrapping them with groundsheets.



Water stopper

Use long boards to prevent flooding from entrances and exits.



Start by doing what you can

Regularly clean up fallen leaves so that water drains quickly.



Prevent household goods from getting damaged

Keep valuables in high positions

Place important documents such as bank books, insurance card, passport, as well as memorable albums and portable household electronics to high positions that will not become submerged.



Reduce damage

Water may flow out of toilets and drainage pipes as a result of sewer backflow caused by torrential rain. Place plastic bags filled with water inside toilet seats or on top of drainage pipes to prevent water from flowing out.



About the Edogawa City Disaster Prevention App

The Edogawa City Disaster Prevention App was released on April 15, 2022. In the event of a disaster, you can get real-time information on the damage overview and the available evacuation centers in the city. Also, in ordinary times, you can check transportation and weather information. Please install it for your convenience.

The main features of the Disaster Prevention App



1 Display Toggle

You can select the content to be displayed from six types: TOP Screen, Disaster Prevention Map, Transportation/Lifeline, Community, Weather Information, and Damage Status.

2 Evacuation Information / Disaster Prevention Map

You can display various information about an evacuation such as the details of the evacuation order and evacuation facilities, and you can check the flood hazard map of Edogawa City.

3 Announcement

Displays the announcement sent by Edogawa City.

4 Disaster Prevention Knowledge

You can access the website of Edogawa City and check information on disaster prevention.

5 Others

You can set the language to use with this app. You can select from Japanese, English, Chinese (Simplified, Traditional) and Korean.

How to install the Disaster Prevention App



Please search for "Edogawa City Disaster Prevention" in the app store or use the two-dimensional code at the right of the screen to download.



iOS



android

We also have a Disaster Prevention Portal (website) where you can check the same information as that in the Disaster Prevention App. Please use this as well.

Edogawa City Disaster Prevention Portal



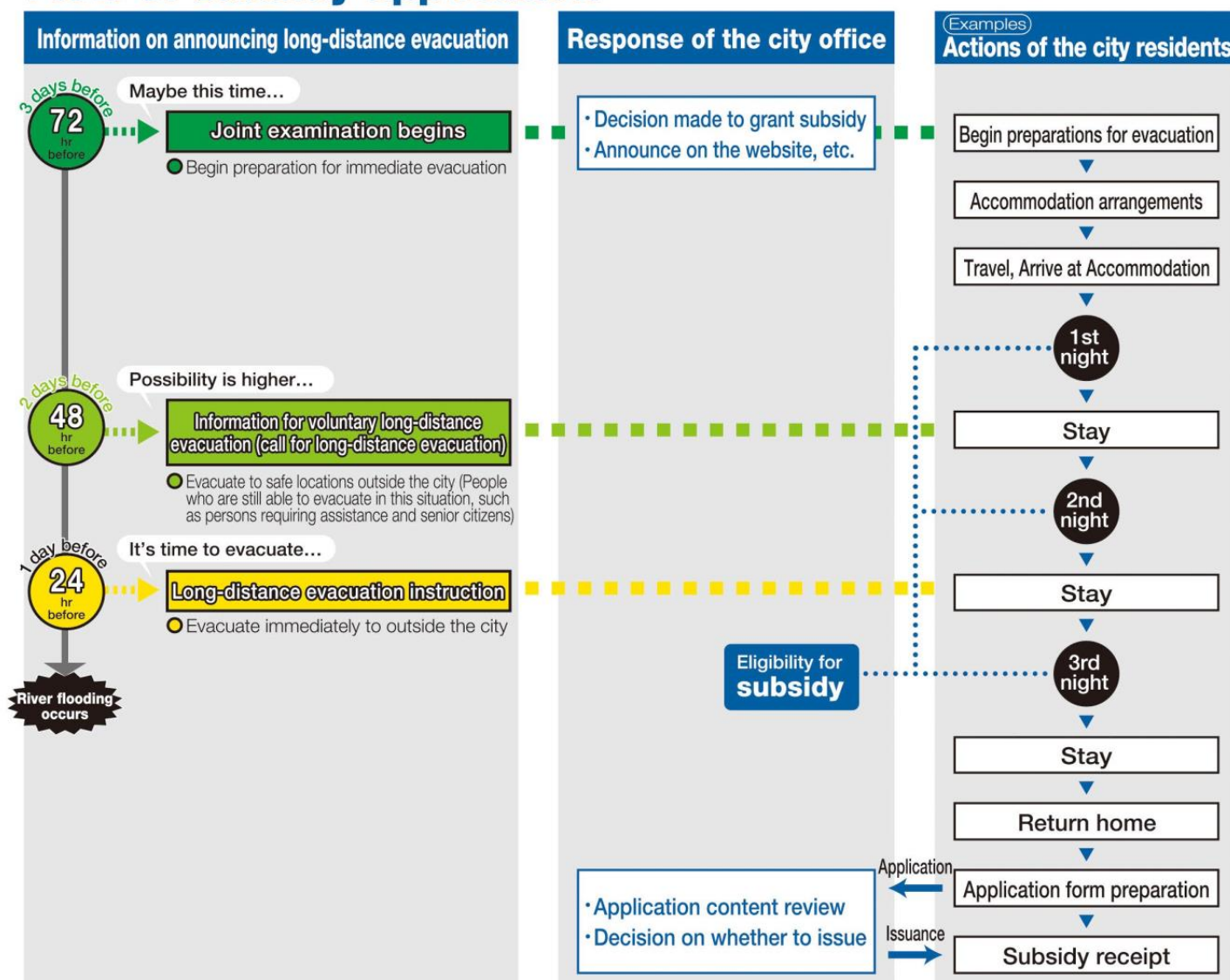
<https://bosai.city.edogawa.tokyo.jp/>



We will provide a subsidy of up to **9,000 yen per person** when the 5 cities of Koto jointly call for long-distance evacuation.

When a huge typhoon or heavy rain that has never been experienced before is forecasted, the start of a joint study will be announced in the 5 cities of Koto three days prior to the event. From this time onwards, a subsidy of up to 9,000 yen per person (uniformly 3,000 yen per night, maximum of three nights) will be issued to residents who used accommodation for long-distance evacuation.

Flow of subsidy application



Accommodation Selection Tips

- Accommodation in the Koto five cities is to be avoided.
- The area west of Ochanomizu Station on the JR Sobu Line is a plateau, and the risk of flooding is low.
- Accommodation in mountainous areas should be considered for the risk of sediment disasters.

For more information, see ...
Edogawa City
official homepage

"Voluntary Wide-Area Evacuation
(Dispersion Evacuation)
in the Event of Large-Scale Flood Disaster"



Documents required to apply for subsidies

- Application for subsidy grant
- Accommodation certificates issued by accommodation facilities
- Copy of the identification document

For more information, see ...
Edogawa City
official homepage

"Large-Scale Flood Disaster
Voluntary Wide-Area
Evacuation Subsidy"



**Decide your flood hazard evacuation point in advance.
Also plan evacuation routes.**

Plan and decide
the long-distance
evacuation point
and routes

Decide how to take
action when at work
or school

Confirm with
the map

Fill in
"Your Personal
Long-distance
Evacuation Plan"



Emergency contacts

Fill in contacts of families and neighbors

Name

Contact

Name

Contact

Name

Contact

Name

Contact

Name

Contact

Long-distance evacuation point

Confirm and fill in long-distance evacuation points such as houses of relatives/friends or accommodation facilities/workplaces that are located outside the city

Name

Contact

Address

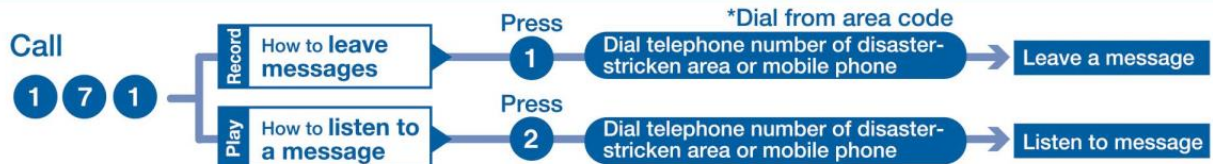
Name

Contact

Address

Disaster Emergency Message Dial: 171

Phone lines become busy when a disaster occurs
Call "171" to record and play messages



Emergency contact and Disaster information contact

Police department

- ☐ Komatsugawa Police Department 03-3674-0110
- ☐ Koiwa Police Department 03-3671-0110
- ☐ Kasai Police Department 03-3687-0110

Others

- ☐ Edogawa City Office 03-3652-1151
- ☐ Bureau of Waterworks Tokyo Metropolitan Government | Customer Service Center 03-5326-1101
- ☐ Tokyo Electric Power Company | Tokyo Customer Center 0120-995-002

Fire department

- ☐ Edogawa Fire Department 03-3656-0119
- ☐ Kasai Fire Department 03-3689-0119
- ☐ Koiwa Fire Department 03-3677-0119

- ☐ Tokyo Gas | Customer Center 0570-00-2211
- ☐ NTT East Japan 116 without area code
- ☐ Tobu Second Sewerage Office, Bureau of Sewerage, Tokyo Metropolitan Government 03-5680-1314

Contact regarding
this flood disaster
hazard map

Disaster Prevention and Risk Management
Section, Risk Management Department of
Edogawa City
TEL. 03-5662-1992 FAX. 03-3652-9891

Issued by Edogawa City
Planning/Editing by the Disaster Prevention and Risk Management
Section, Risk Management Department of Edogawa City
Supervised by Toshitaka Katada, Project Professor of the University of
Tokyo, Graduate School of Interdisciplinary Information Studies

「測量法に基づく国土地理院長承認(使用) R 4JHs 340」
本書に掲載した地図の一部は、「国土数値情報(河川データ、緊急輸送道路、鉄道、市町村役場、警察署、消防署)国土交通省」を使用した。
The information in this hazard map is based on public data as of March 2021.

Issued in May 2019 (Partial Revisions in April 2023)