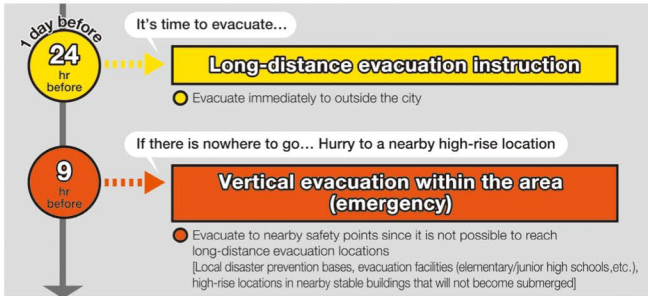


# Partial Revisions to Edogawa City Flood Disaster Hazard Map (As of April 2023)

## 1. Names of Evacuation Information

The names of evacuation information have been revised pursuant to amendments to the Basic Act on Disaster Management made on May 20, 2021, including abolishment of “evacuation advisory.” Accordingly, the five cities of Koto have also revised some of the information names for announcing long-distance evacuation. (There is no change to the timing and meaning of the announcement.)



Partial revisions to names of long-distance evacuation information under “Information on announcing evacuations” on page 9

\*The same revisions apply to the large hazard map in the pocket at the end of the booklet and Your Personal Long-distance Evacuation Plan

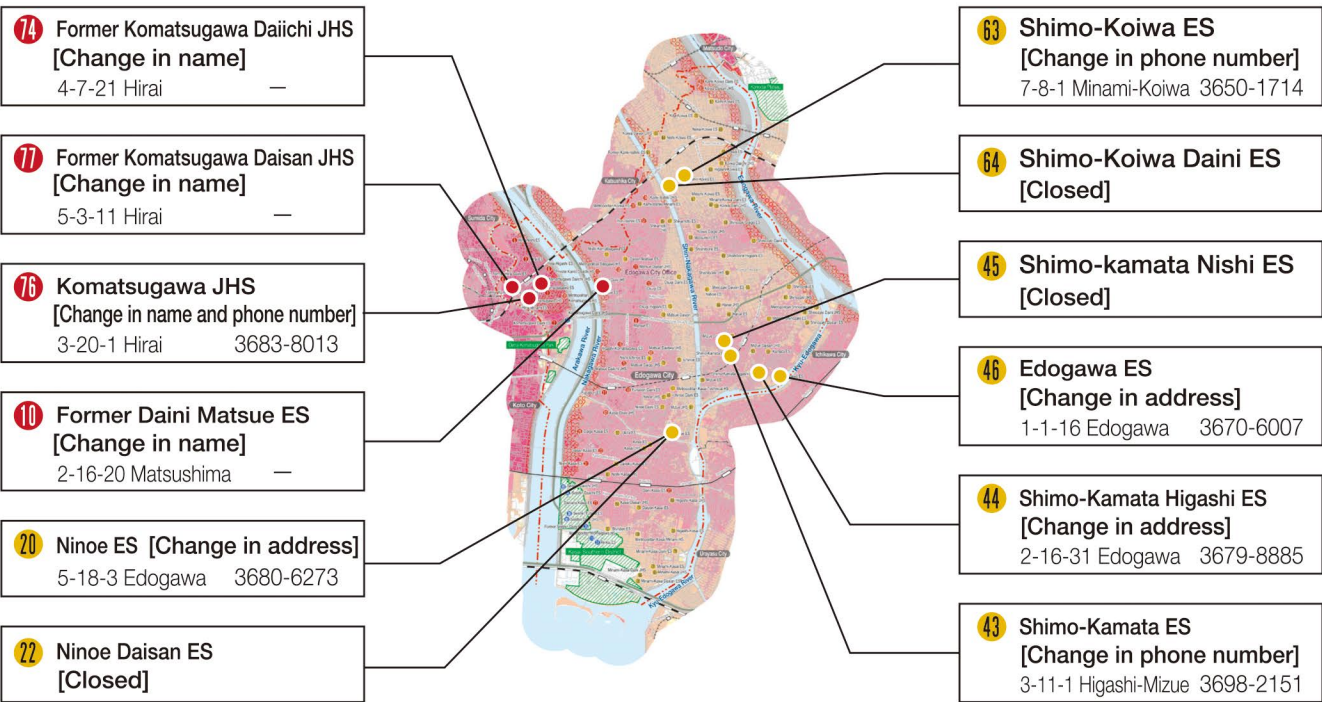


Revisions of names of evacuation information that are issued primarily based on river water levels, under “Information notifying evacuation when there is a high risk of river flooding” on page 20

## 2. Partial Revisions to Evacuation Facility Information

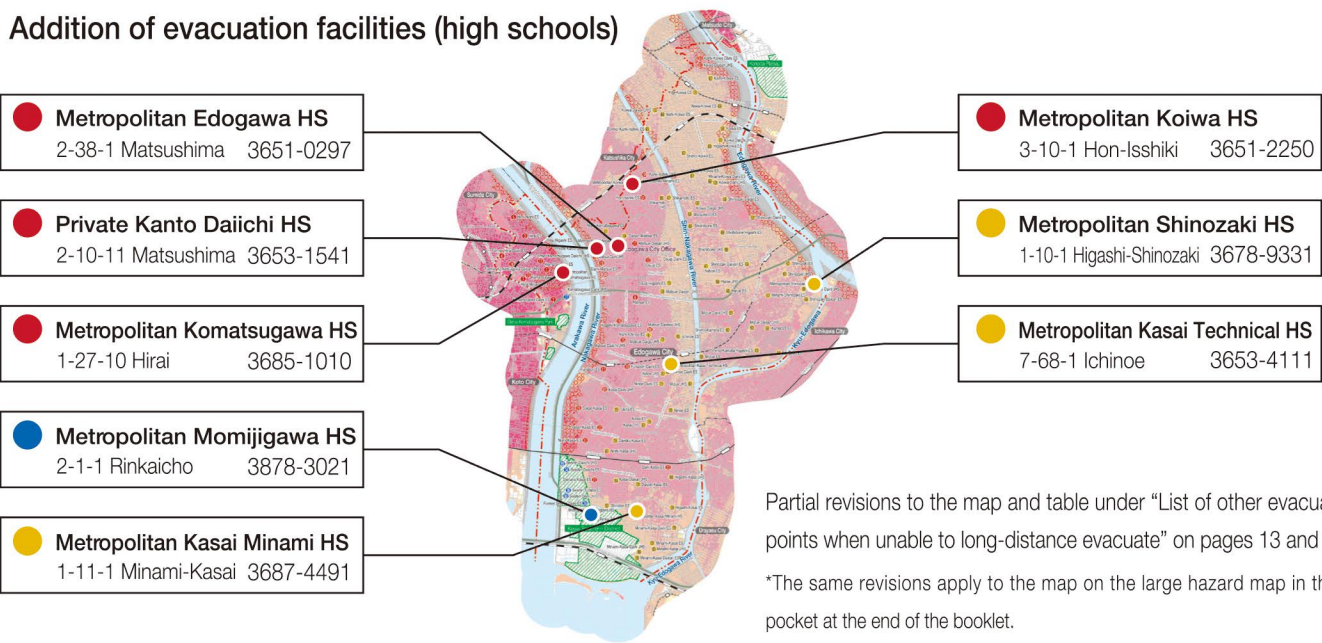
Part of the information on evacuation facilities will be changed owing to the consolidation of schools. With the conclusions of agreements, high schools in the city will be added as evacuation facilities.

### (1) Partial change of evacuation facilities (elementary and junior high schools)



Partial revisions to the map and table under “List of other evacuation points when unable to long-distance evacuate” on pages 13 and 14  
\*The same revisions apply to the map on the large hazard map in the pocket at the end of the booklet.

### (2) Addition of evacuation facilities (high schools)



Partial revisions to the map and table under “List of other evacuation points when unable to long-distance evacuate” on pages 13 and 14  
\*The same revisions apply to the map on the large hazard map in the pocket at the end of the booklet.

## 3. Reference Water Levels for Some Rivers

For the three rivers, Edogawa, Tonegawa, Nakagawa, the water levels of flood danger and evacuation judgment set by river managers were changed.

Changed water level			
Edogawa River	Noda water gauging station	River flooding risk water level 9.10m	Evacuation alert water level 8.50m
Tonegawa River	Kurihashi water gauging station	River flooding risk water level 9.20m	Evacuation alert water level 7.60m
Nakagawa River	Yoshikawa water gauging station	River flooding risk water level 4.10m	Evacuation alert water level 3.70m

## 4. Locations of Sandbag Station

The sandbag station locations shown on page 31 may be subject to change.  
For the latest information, please see Edogawa City’ s official website (URL below or two-dimensional code on the right).  
● Sandbag Station : [https://www.city.edogawa.tokyo.jp/e065/bosaianzen/bosai/jijo/n\\_donoustation.html](https://www.city.edogawa.tokyo.jp/e065/bosaianzen/bosai/jijo/n_donoustation.html)

## 5. Additions and changes to "How to find information"

New methods were added to "How to find information" on page 10 and 20, and some descriptions were changed. The explanation of functions of "Edogawa City Disaster Prevention App" were added.

■ [Addition] Edogawa City Disaster Prevention App

The main features

- 1 Display Toggle  
You can select the content to be displayed from six types: TOP Screen, Disaster Prevention Map, Transportation/Lifeline, Community, Weather Information, and Damage Status.
- 2 Evacuation Information / Disaster Prevention Map  
You can display various information about an evacuation such as the details of the evacuation order and evacuation facilities, and you can check the flood hazard map of Edogawa City.
- 3 Announcement  
Displays the announcement sent by Edogawa City.
- 4 Disaster Prevention Knowledge  
You can access the website of Edogawa City and check information on disaster prevention.
- 5 Others  
You can set the language to use with this app. You can select from Japanese, English, Chinese (Simplified, Traditional) and Korean.

iOS

android

■ [Addition] Edogawa City Disaster Prevention Portal

■ [Addition] Edogawa City LINE official account

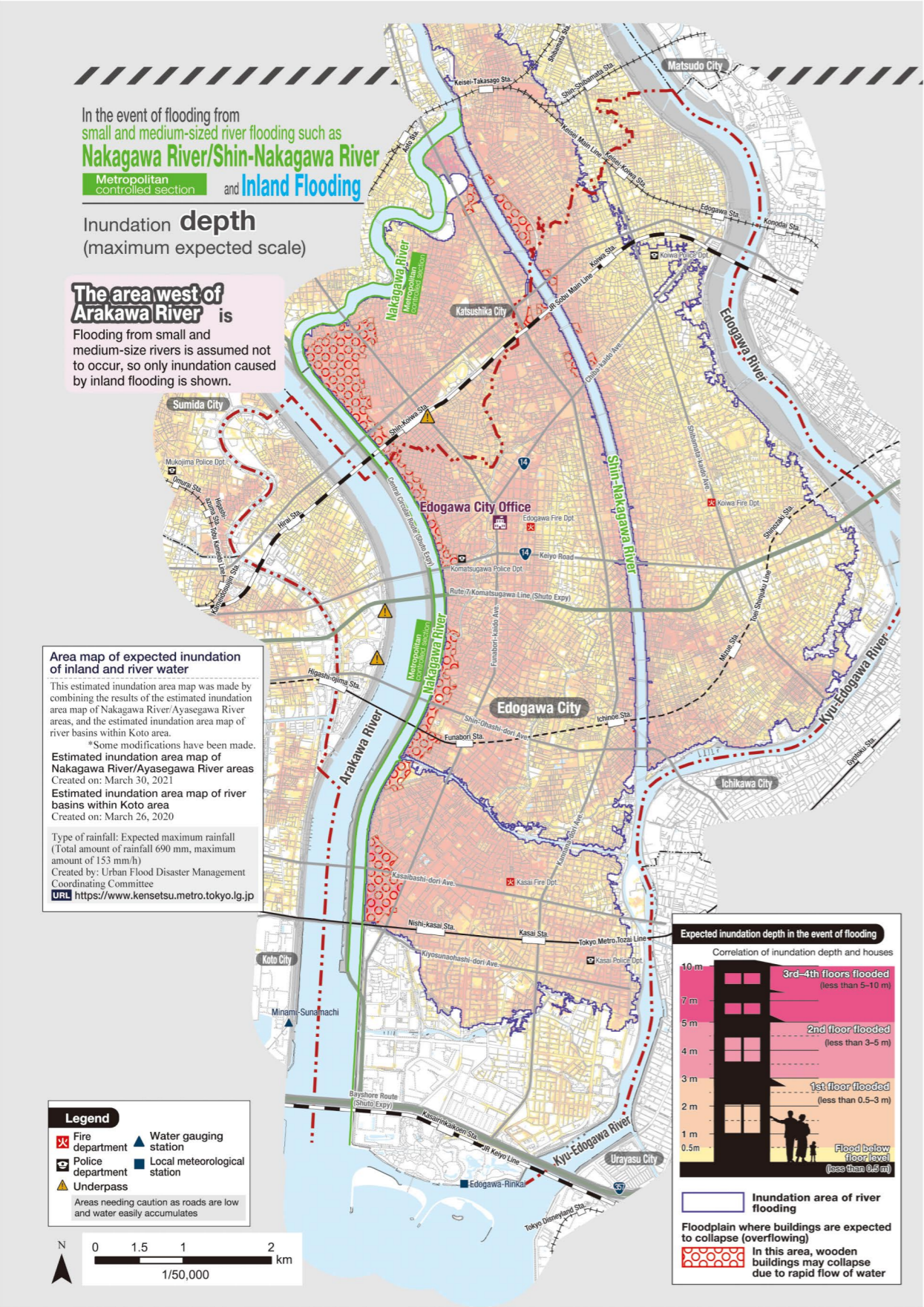
■ [Change] Address of Edogawa Mail News  
t-edogawamail@sg-m.jp  
t-edogawa@sg-p.jp

## 6. Wide-Area Evacuation Subsidy

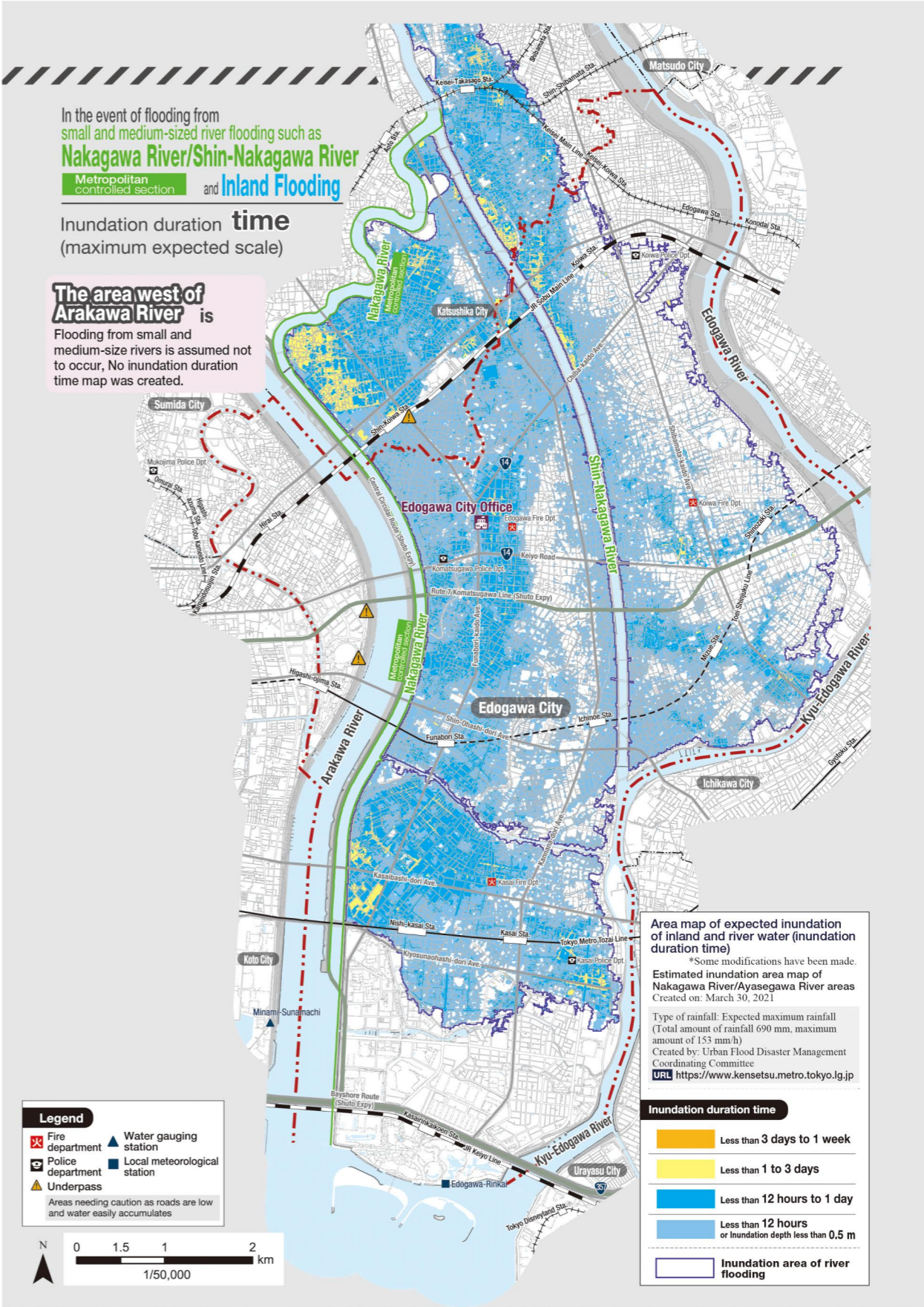
A subsidy of up to 9,000 yen per person is granted to citizens who used accommodation for wide-area evacuation. This description was added. Please refer to the official website of Edogawa City (the following address or the two-dimensional code at the right).  
● Large-Scale Flood Disaster Voluntary Wide-Area Evacuation Subsidy : <https://www.city.edogawa.tokyo.jp/e007/bosaianzen/bosai/jijo/kouikihinanhojokin.html>

7. Inundation depth and duration in the event of flooding from small and medium-sized rivers such as Nakagawa River/Shin-Nakagawa River, and inland flooding were added.

The following was added in combination: maps of assumed inundation areas of river basins in the Koto area and Nakagawa-Ayasegawa area which are published by the Tokyo Metropolitan Government.



Inundation depth in the event of flooding from small and medium-sized river flooding such as Nakagawa River/Shin-Nakagawa River and inland flooding



Inundation duration in the event of flooding from small and medium-sized river flooding such as Nakagawa River/Shin-Nakagawa River and inland flooding