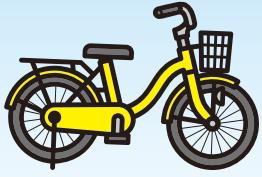


Edogawa-ku



Rent-a-Cycle

Rental fee	Type of bicycle	One day (24 hours)	Monthly (1 month)	Monthly (3 months)
	Standard bike	210 yen	2,100 yen	6,280 yen
	Electric bike	340 yen	4,380 yen	13,140 yen
Open	4:30-1:00 on the next day *until 1:30 at the Hirai and Koiwa bicycle parking lots			



English
Chinese
Korean

▲ Multilingual

How to use the rent-a-cycle system

- ★ You need to register for both one day use and monthly use. We will issue a registration card when you apply for the system.
- ★ At the time of registration, you need an ID with your name and other information (see below) and a reachable telephone number.
- ★ Regardless of living or working in Edogawa-ku, those who are junior high school students or older and are able to use a bicycle without any safety problems can rent a bicycle. (Junior high school students need the approval of their guardian.)
- ★ Regarding monthly use, you can rent a bicycle at the Port where your registration was approved.
- ★ Regarding one day use, you can rent and return a bicycle at any Port as described on the back.
- ★ Please be sure to return the bicycle by the end of the rental period. If you do not return the bicycle by the end of the rental period, you may be temporarily suspended from using the service.

<Your ID>

Please bring one of the following.

(Driver's license, My Number card, passport, citizen identification card, residence card, health insurance card, pension book, long-term care insurance card, student identification card, or other identification)

*If you do not have any of the above, please make an inquiry at the nearest port.

Measures for an unexpected incident

- If you are involved in a traffic accident, report it to the police and contact our staff.
 - ◆ You need to take full responsibility for a traffic accident.
 - ◆ Except for an accident caused by a defect of a bicycle, Edogawa-ku will not be liable for the accident.
- The bicycle is insured. If an accident happens, please contact the insurance company yourself.
- If a bicycle is stolen, contact the Port immediately and report it to the police after confirming the necessary items for the procedure, such as the security registration number.
- If you damage a bicycle or have a flat tire, contact the Port. If the damage is caused deliberately or due to your serious negligence, you need to pay the repair cost.

Precautions

- Please use a bicycle safely following traffic rules and in a good riding manner.
- Please park a bicycle at the bicycle parking lot of the facilities and make sure to lock it.
- If you leave a bicycle in an area where parking is prohibited and the bicycle is removed, you need to follow the procedure to retrieve it at the designated point by yourself. You need to pay the removal fee by yourself.
- Regarding one day use, you can use a bicycle for 24 hours. Please return the bicycle to the Port within the fixed time. If you want to continue using the bicycle, please say so when you rent it.
- In the case of monthly use, please return the bicycle at least every five days for maintenance.
- If you lose a key or your registration card, you need to pay the actual cost for reissue.

SUSTAINABLE DEVELOPMENT GOALS



Edogawa City is actively working on SDGs aiming at the realization of a symbiotic society where everyone can live with peace of mind and be true to themselves.



STOP! You may not be able to rent a bicycle in the following cases:

- If you deliberately damage or lose a bicycle
- If you lend a bicycle or your registration card to a third party
- If you leave a bicycle in a public area
- If you violate any laws or regulations to be observed when using the bicycle
- If you act in any way that causes damage to the management of the business, such as failing to return a bicycle for a long period of time
- If you violate the terms of use

