

Special Edition



# Disaster Preparedness at Home



Edogawa City

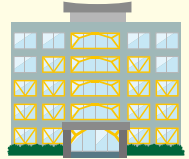


## Safety Precautions for Your Home

In the Hanshin-Awaji Earthquake disaster, the cause of death for approximately 80% of individuals was being crushed to death by the collapse of a building or falling furniture. Every household should take safety precautions to prevent this.

### ▶ Earthquake Proofing

Edogawa City conducts free earthquake-resistance tests and offers assistance for earthquake-resistance repairs.



Building Guidance Section,  
Earthquake-Resistance Promotion Subsection  
TEL. 03-5662-6389

### ▶ Furniture Tip-Over Prevention

Take precautions such as finding how to best arrange your furniture as well as installing anti-tip fixtures and shatterproof film for glass.



You can view more detailed information on earthquake proofing for your home and furniture tip-over prevention by accessing this QR code.



## Emergency Survival Kit Preparation

### ▶ How to Prepare

- Only select the minimum amount required for the items that you can carry.
- Prepare items that align with the conditions of you and your family.
- Place your kit near the entrance of your home or inside your car.

### ▶ Survival Kit Example

- Portable radio
- Flashlight
- Gloves
- Clothes
- Cash
- Water
- Emergency rations
- First aid kit
- .....
- .....

- Portable toilet
- Okusuri Techo  
(handbook detailing your prescription history)
- Medicine that you are currently taking
- Portable charger
- Masks, sanitizer, etc.
- .....
- .....





## Stockpiling for Survival

Stockpile supplies to prepare for when lifelines and the distribution of goods are suspended during a disaster.

- Prepare at least 3 days' worth of resources. If possible, prepare more than 1 week's worth of resources that you can live on.
- Prepare items that align with the conditions of you and your family.
- Bring as much as you can carry with you, even if you will be living in a shelter.

**Drinking water** As a general guideline, prepare 3 liters per person, per day and water bags

**Food** Food that you normally eat, retort (boil-in-bag) foods, instant foods, canned foods

**Fuel** Portable stove as well as gas canisters, and keep the fuel tank at least half-full for your car

**Other daily commodities**



Portable toilets, toilet paper, toiletries, medicines that you are taking, feminine products (sanitary products/cosmetics), items for infants/the elderly/and those with disabilities (soft foods, powdered milk, diapers)

### ▶ Stockpile with the "Rolling-Stock" Method

- Purchase a large amount of food and daily commodities.
- As part of your everyday life, consume items from your stockpile starting from the oldest items.
- Replace the consumed portion of your stockpile and always maintain a slight surplus of items.



### ▶ Stockpile Portable Toilets

Stockpile portable toilets to prepare for when the water supply is cut off or the sewage pipes become damaged. You can use portable toilets after installing them on the toilets in your home.



## Evacuation, Fire, and Disaster Drills

### ▶ Evacuation Drills

Determine where you will evacuate to, and try running drills where you actually walk to your evacuation site.



### ▶ Fire and Disaster Drills

Participate in your area's fire and disaster drills, and learn about first-aid firefighting as well as first-aid rescue methods.





## Actions to Take After an Earthquake

### ▷ Stay Safe

Prioritize actions such as protecting your head from falling objects as well as moving to a safe place, and once the tremors have stopped, evacuate.

### ▷ Help One Another

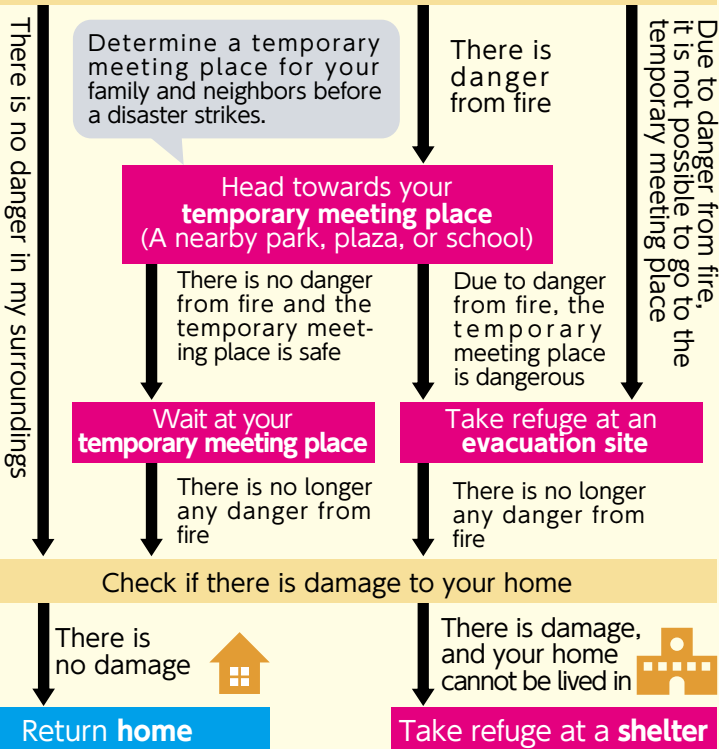
Work with others to aid the injured and rescue those who have become trapped.

### ▷ Be Careful When Evacuating

Close gas valves, shut off circuit breakers, and do not create any source of ignition.

### ▷ Evacuation Process

Check your surroundings (fire and evacuation information, etc.)



## Save Your Life from Flood Damage

### ▷ Anticipate Danger and Save Your Life

Pay attention to **weather information** as well as **information from public administrations**, including Edogawa City, and quickly seek shelter when danger is approaching.

Access this QR code to view a flood-damage hazard map.





# Shelters

## ▷ What Is a Shelter?

A shelter is a facility that temporarily takes in and protects people who have suffered damages from a disaster, including those with homes that have collapsed or burned down. A shelter also serves as a site for the distribution of goods among other roles as a support base for the entire region.

## ▷ 113 City Schools (Elementary, Junior High, Etc., Including 3 Closed Schools)

Edogawa City has designated all city elementary and junior high schools as well as a portion of high schools as shelters. You may go to any shelter during a disaster. You can find the locations of the shelters by accessing the QR code on the back of this pamphlet.

My neighborhood shelter

## ▷ Shelter Management Committee

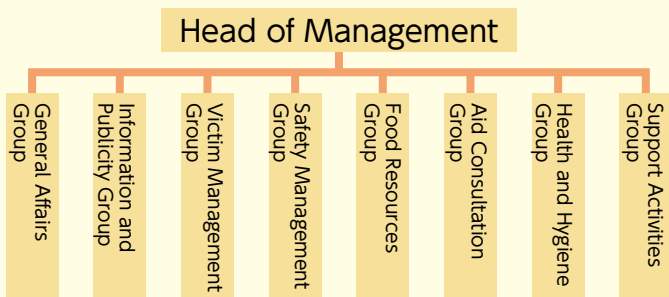
It is standard for shelters to be operated independently by shelter residents. Before a disaster occurs, a shelter management committee should be set up at each school to promote orderly living at each shelter.

All the shelter residents are responsible for managing their shelter!



## ▷ Shelter Management Committee Organization Chart (Example)

The various activities that take place when opening a shelter are organized by each group and its contents.



## ▷ Standard Stockpiled Resources at Each Shelter

- Drinking water: Uses water from the school water tank
- Food: 4,000 servings of crackers and 1,000 servings of instant rice
- Electricity, etc.: Batteries, generators, and 48 gas canisters
- Blankets, etc.: 800 standard blankets and 600 space blankets
- Toilets: Portable toilets for 3,600 uses and 5 manhole toilets
- Other: Rescue tool sets, 5 public phones, powdered milk, portable stoves, blue tarp, infection control supplies (masks, sanitizer, screens/dividers, etc.), diapers, feminine hygiene products, etc.



## Where Can I Find the Nearest Water Supply Station?

### ▶ When the Water Supply Has Been Cut Off, Go to a Disaster Water Supply Station

If the water supply has been cut off due to an earthquake or another disaster, the Tokyo Metropolitan Government Bureau of Waterworks will set up “disaster water supply stations” at the water supply bases on the map below, and then distribute water at these stations. When going to a “disaster water supply station,” please bring **empty PET bottles or water bags**.



### ▶ Check Locations Before a Disaster Strikes

To live a healthy life even in times of disaster, each person requires approximately 3 liters of drinking water per day. In addition to stockpiling the necessary amount of water for your family, every household should also confirm the location of their “disaster water supply station” to be prepared for an emergency.

### ▶ List of Disaster Water Supply Stations (Water Supply Bases)



Access this QR code to view more detailed information about water supply during a disaster.





## If Seriously Injured, Go to an Emergency Medical Aid Station

### ▶ During a Large-Scale Disaster, Medical Offices and Clinics Will Be Closed

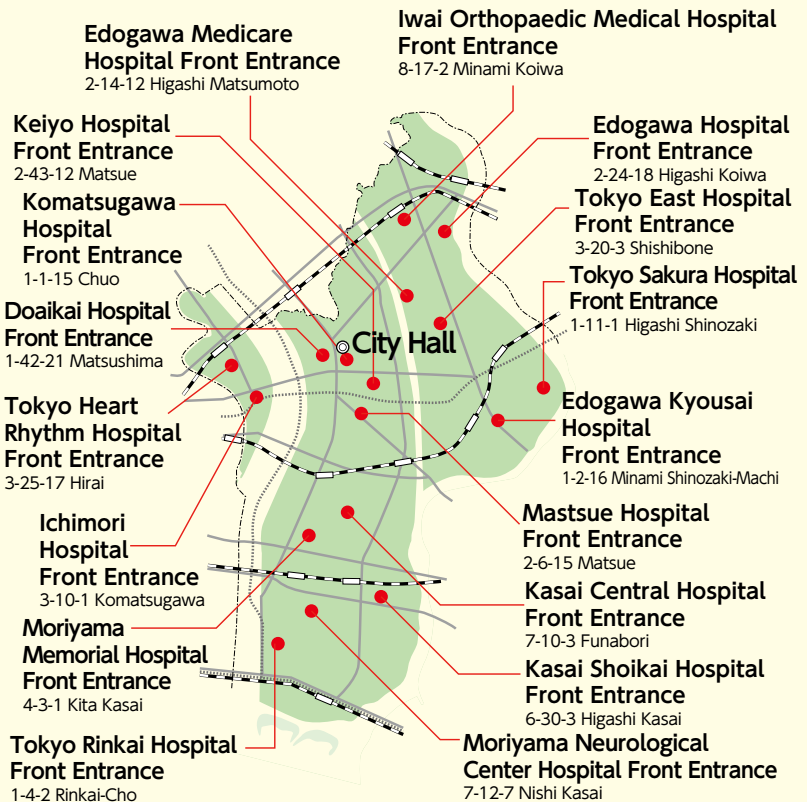
Directly after a large-scale disaster occurs, medical institutions will collectively pool their efforts to aid the injured. As a result, medical offices and clinics will be closed, and the injured will be treated at “emergency medical aid stations” that have been set up in the areas adjacent to the hospitals listed below. If you have been seriously injured in a disaster, please go to an “emergency medical aid station.”



### ▶ Triage Will Be Performed

At an “emergency medical aid station,” injured persons who require emergency treatment will have triage performed (the severity of their condition will be judged) so that the injured may receive quick and appropriate care, and then they will be transported to a hospital or other medical facility.

### ▶ List of Emergency Medical Aid Stations



Access this QR code to view more detailed information on medical treatment during a disaster.





## Safety Check Methods

### ▶ Confirm Your Methods

Confirm the methods that you, your family, and neighbors will use to check on each other's safety.

### ▶ Use Social Media

During a disaster, it may be easier to connect over social media than through voice calls.

### ▶ Practice Ahead of Time

Below is a typical safety-check tool. On the 1st and 15th day of each month, it can be used to gain practical experience with a safety check.

## ● Disaster Message Line (171)

This line is accessible from general phones, public phones, mobile phones, and other types of phones.

**How to Record a Message**

Dial **171**

▼ You will be provided with guidance

To record, press **1**

▼ You will be provided with guidance

Dial in a phone number

▼ You will be provided with guidance

Record your message

**How to Play Back a Message**

Dial **171**

▼ You will be provided with guidance

To play back, press **2**

▼ You will be provided with guidance

Dial in a phone number

▼ You will be provided with guidance

Play back your message

Text registered on web171 is converted to voice



Voice that has been recorded on the 171 message line is played back

## ● Disaster Message Board (web171)

An online message board for confirming the safety of others.

QR code → Enter a phone number → Register a message / Check a message

## ● Search for collective safety information with "J-ampi"

You can search through collective safety information that has been provided through disaster message lines, message boards, news media, and local governments.

QR code → Enter a phone number or name → Check safety information

## ● Google Person Finder

You can register and search for safety information by name and also link with J-ampi. \*This is the only service that can be experienced at any time.

QR code → Enter a name → Register safety information / Check safety information





## Gathering Disaster Information

When a disaster strikes, take action and Save your life based on trustworthy information.

### ▶ **Edogawa City Disaster Preparedness App** **NEW**

Understand city-level disaster preparedness information with a single app.

#### Disaster Preparedness



Android  
version



iOS  
version



### ▶ **Emergency Broadcast System**

This system broadcasts from speakers that have been set up in 290 locations within the city. The contents of each broadcast can be checked by phone (standard call rates apply).

Emergency Broadcast Confirmation Line: 03-3652-1284

### ▶ **FM Edogawa 84.3 MHz**

When a disaster such as a large earthquake occurs, FM Edogawa will prioritize the broadcast of information pertaining to Edogawa city. Also, in times of emergency, broadcasts will be conducted directly from City Hall.

### ▶ **Edogawa Email News**

Those who have registered their email with this service will be sent information. Registration is free (standard call rates apply). If you would like to register your email, please send a blank email to the following address:  
t-edogawa@sg-p.jp

### ▶ **Edogawa City Official Twitter @edogawa\_city**

If you use Twitter, follow our account to be prepared for disasters.

### ▶ **Japan National Tourism Organization Official Twitter @JapanSafeTravel**

Those who have Twitter should follow this account to be prepared for disasters.



### ▶ **NHK WORLD-JAPAN**

This service allows you to obtain the latest information in 17 different languages.



#### Disaster Preparedness Tokyo App

Know, prepare, and find useful tips for disaster preparedness with this app



Android  
version



iOS  
version





## Evacuation Sites

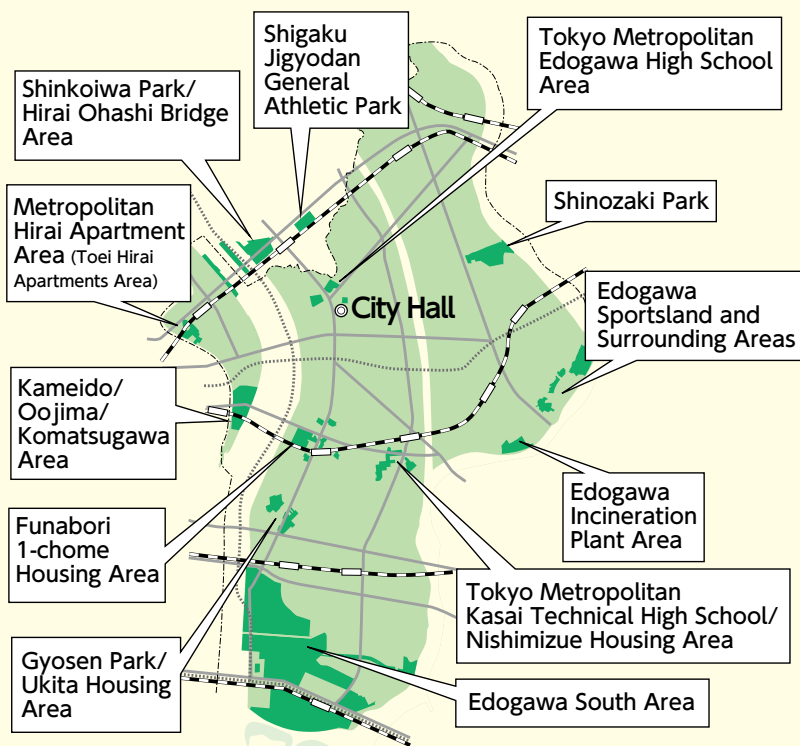
### ▶ Places to Protect Yourself from Fire

An evacuation site is a place where you can escape spreading fire and wait until it is under control. You may go to any evacuation site during a disaster.



My neighborhood evacuation site

### ▶ List of Evacuation Sites in the Edogawa City Area



This QR code can be used to view a disaster-preparedness map. You can search from your home address to find shelters and evacuation sites within the city.



## Contact Information

Published July 2022

**Edogawa City Risk Management Office,  
Community Disaster Prevention Section  
TEL. 03-5662-2129**



**Edogawa City Disaster  
Preparedness Homepage  
[https://www.city.edogawa.tokyo.jp/  
e007/bosaianzen/bosai/index.html](https://www.city.edogawa.tokyo.jp/e007/bosaianzen/bosai/index.html)**

